



Single Family  
**128 Forge Drive**  
Lebanon, PA 17042

**COMMUNITY SALES MANAGER**

Jilian Treadway  
Call/Text 717-799-6695

**MOVE-IN READY**



Home Priced at  
**\$549,900**

Plan: Darien

4 Bedrooms

2.5 Bathrooms

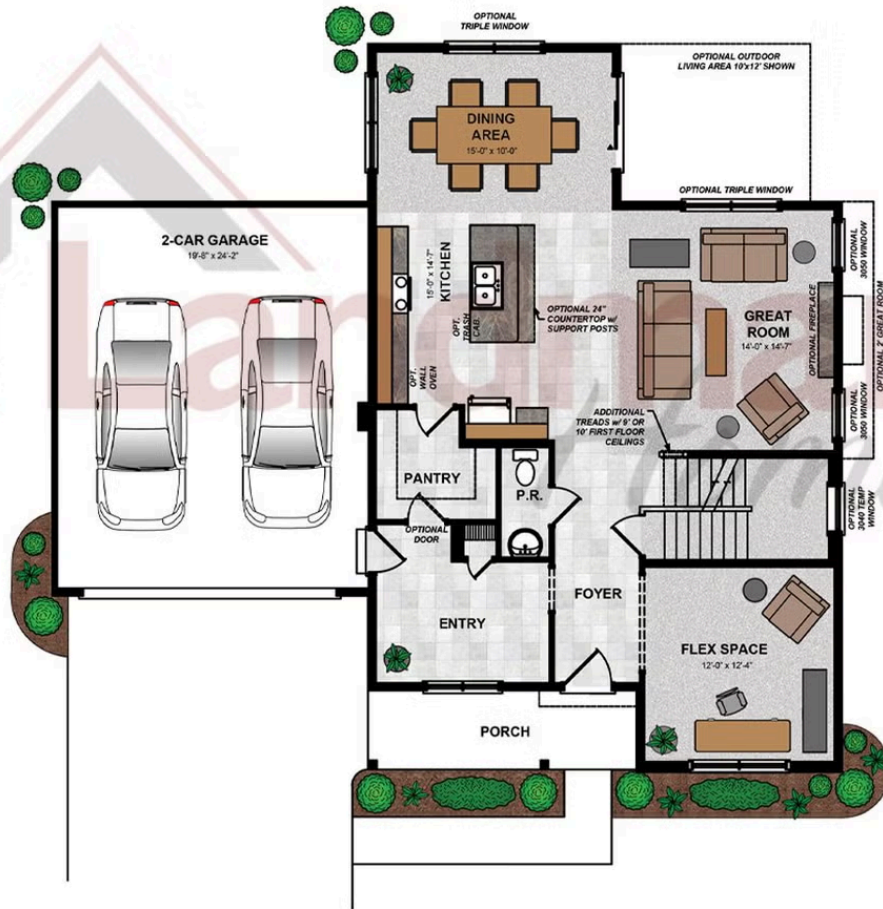
2,696 Sq. Ft.

This beautiful home with a welcoming front porch includes a 2-car garage with a large mudroom entry. The first floor boasts 9' ceilings and stylish vinyl plank flooring in the main living areas. To the front of the home is a convenient, carpeted flex room that can be used as a study, living room, or other versatile space. The kitchen is well-appointed with quartz countertops, a tile backsplash, stainless-steel appliances, and a large pantry. The sunny dining area provides access to a rear patio. Open to the kitchen, the comfortable family room is warmed by a gas fireplace with a stone surround. The 2nd floor owner's suite features an expansive closet and a private bathroom with a tile shower and double bowl vanity. Adjacent to the suite are 3 additional bedrooms, a full bathroom, a spacious rec room, and a convenient laundry room. (The floor plan shown represents the standard layout for this home plan. Actual layout, features, and options may vary. Construction plans take precedence over artwork. Please see the Community Sales Manager for details.)

Document generated 2/22/26

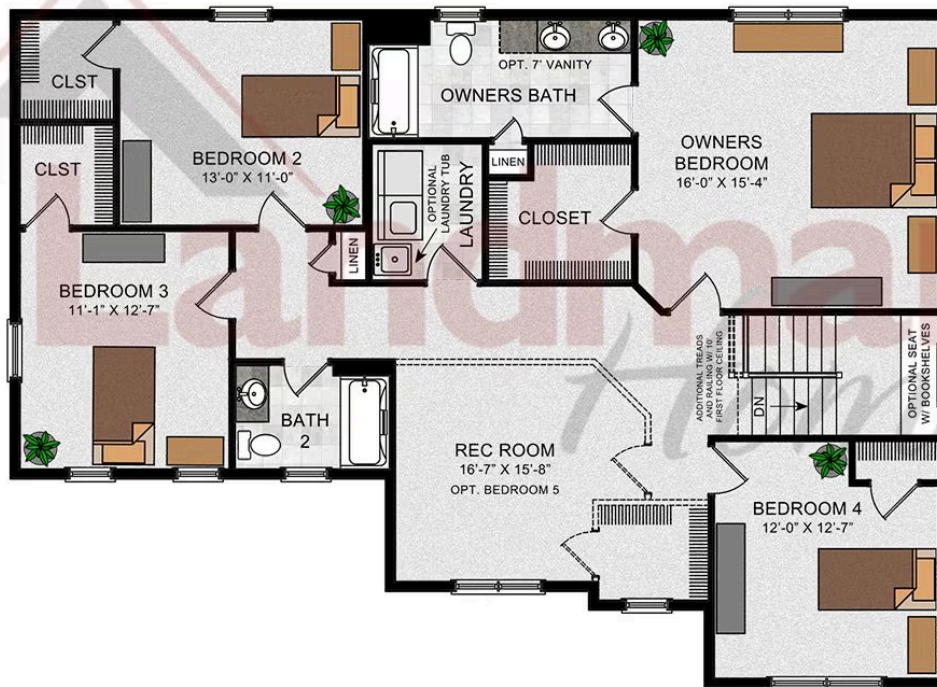


## FIRST FLOOR



© 2024 Landmark Builders, Inc. We enforce our intellectual property rights to the fullest extent permitted by applicable law. Elevations and landscaping are artists' conceptions only. Floor plans may vary depending on elevation selected. Actual construction documents take precedence over artwork.

## SECOND FLOOR



© 2022 Landmark Builders, Inc. We enforce our intellectual property rights to the fullest extent permitted by applicable law. Elevations and landscaping are artists' conceptions only. Floor plans may vary depending on elevation selected. Actual construction documents take precedence over artwork.

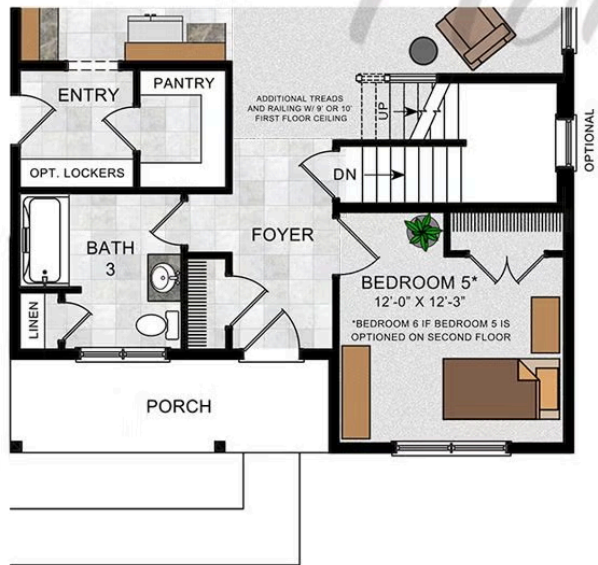


Darien

OPTIONAL FIRST FLOOR PLAN  
 W/ REDESIGNED ENTRY



OPTIONAL FIRST FLOOR PLAN  
 W/ BATH 3 AND BEDROOM REPLACING FLEX



© 2022 Landmark Builders, Inc. We enforce our intellectual property rights to the fullest extent permitted by applicable law. Elevations and landscaping are artists' conceptions only. Floor plans may vary depending on elevation selected. Actual construction documents take precedence over artwork.