



Single Family
Logan
The Meadows at Colonial Club

COMMUNITY SALES MANAGER
Brittany Holtz
Call/Text 717-327-1733



Call for Price

- 3 Elevations Available
- 4 Bedrooms
- 3.5 Bathrooms
- 3,605+ Sq. Ft.
- 2 Car Garage

Landmark's newest 2-story home with over 3,600 square feet includes 4 bedrooms, 3.5 baths, and a 2-car garage with mudroom entry. A dramatic 2-story foyer creates a grand first impression. The 1st floor also includes a study, formal dining room, great room and generous kitchen and pantry. Add an optional 2nd island in the kitchen for extra storage and entertaining. The 2nd floor includes a spacious owner's suite with an optional cathedral ceiling, 3 full baths, and enlarged closets for every bedroom. (Pricing may reflect limited time savings/incentives. See Community Sales Manager for details.)

Available Elevations



Upgraded B Transitional



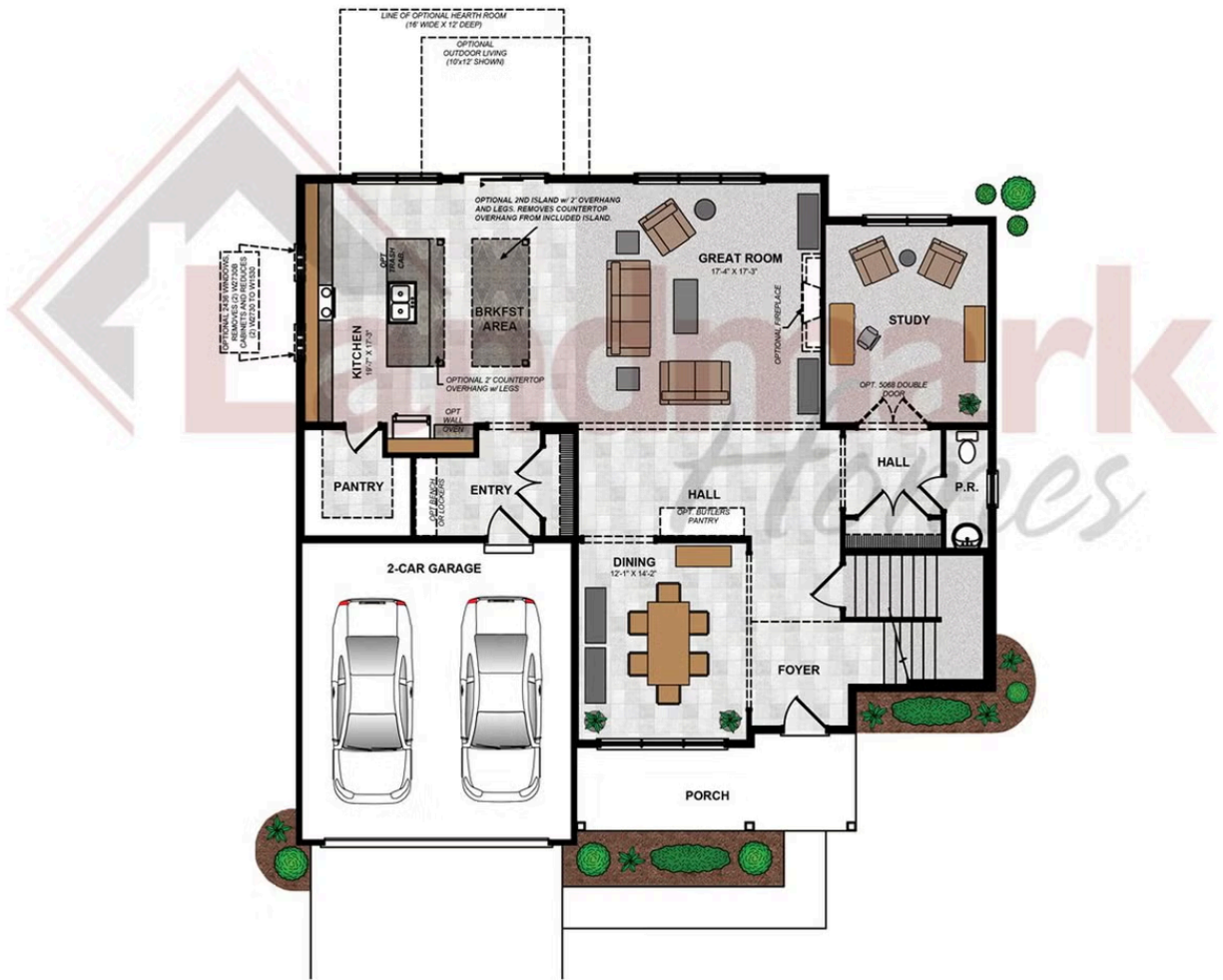
Upgraded C Trademark



Upgraded Contemporary Elevation



FIRST FLOOR



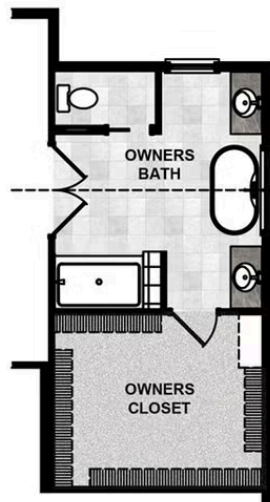
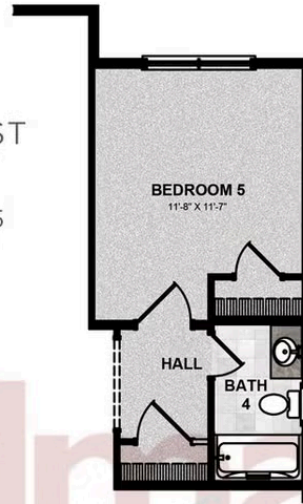
© 2024 Landmark Builders, Inc. We enforce our intellectual property rights to the fullest extent permitted by applicable law. Elevations and landscaping are artists' conceptions only. Floor plans may vary depending on elevation selected. Actual construction documents take precedence over artwork.

SECOND FLOOR



© 2024 Landmark Builders, Inc. We enforce our intellectual property rights to the fullest extent permitted by applicable law. Elevations and landscaping are artists' conceptions only. Floor plans may vary depending on elevation selected. Actual construction documents take precedence over artwork.

OPTIONAL FIRST
FLOOR PLAN
WITH BEDROOM 5
AND FULL BATH



OPTIONAL SECOND
FLOOR PLAN
WITH UPGRADED OWNERS BATH

© 2024 Landmark Builders, Inc. We enforce our intellectual property rights to the fullest extent permitted by applicable law. Elevations and landscaping are artists' conceptions only. Floor plans may vary depending on elevation selected. Actual construction documents take precedence over artwork.