



Single Family  
**2505 Hawthorne Drive**  
Harrisburg, PA 17110

**COMMUNITY SALES MANAGER**

Brittany Holtz  
Call/Text 717-327-1733

**MOVE-IN READY**



Home Priced at  
**\$459,700**

Plan: Palmer

3 Bedrooms

2.5 Bathrooms

1,873 Sq. Ft.

This 2-story home with a sleek profile includes a side-load garage with mudroom entry, a screened-in patio for outdoor living, and plenty of windows with mountain views. The first floor boasts 9' ceilings and stylish vinyl plank flooring. The kitchen, featuring stainless steel appliances, attractive cabinetry, and quartz countertops with a tile backsplash, opens to the spacious dining area and sunny living room with a modern fireplace design as the focal point of the room. The 2nd floor boasts an owner's suite with an expansive closet and private bathroom, 2 additional bedrooms, a second full bathroom, and a convenient laundry room. The community features 19 acres of green space, walkability to restaurants, community events, etc. and is convenient to Harrisburg, Hershey, and major highways. (The floor plan shown represents the standard layout for this home plan. Actual layout, features, and options may vary. Construction plans take precedence over artwork. Please see the Community Sales Manager for details.)



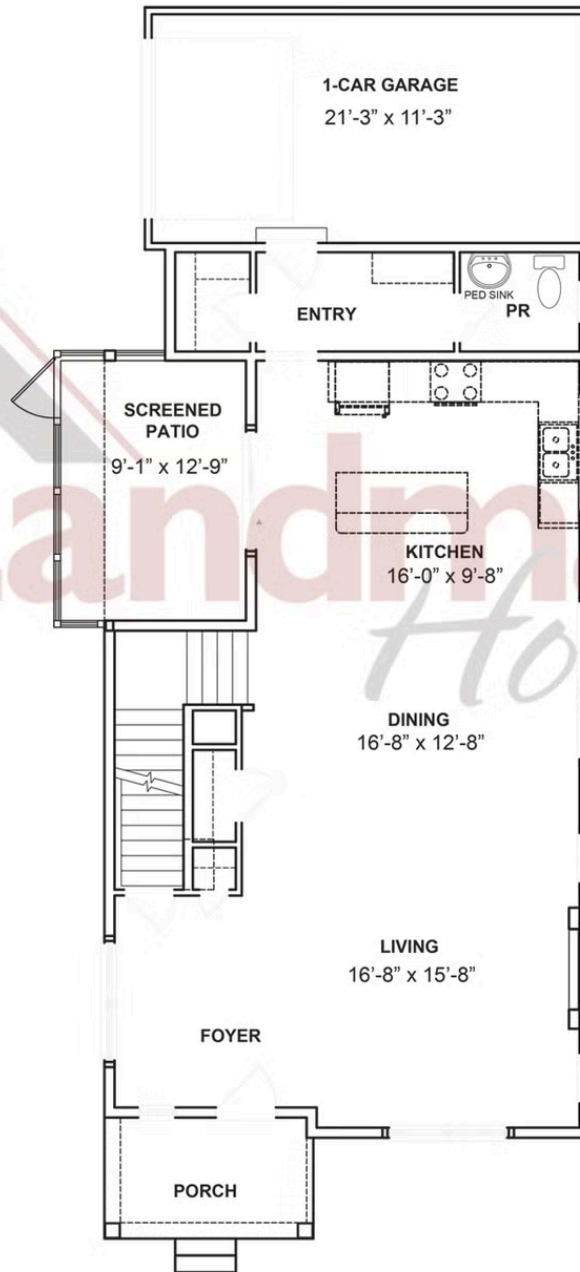


Single Family  
**2505 Hawthorne Drive**  
Harrisburg, PA 17110

**COMMUNITY SALES MANAGER**

Brittany Holtz  
Call/Text 717-327-1733

## FIRST FLOOR



© 2025 Landmark Builders, Inc. We enforce our intellectual property rights to the fullest extent permitted by applicable law. Elevations and landscaping are artists' conceptions only. Floor plans may vary depending on elevation selected. Actual construction documents take precedence over artwork.



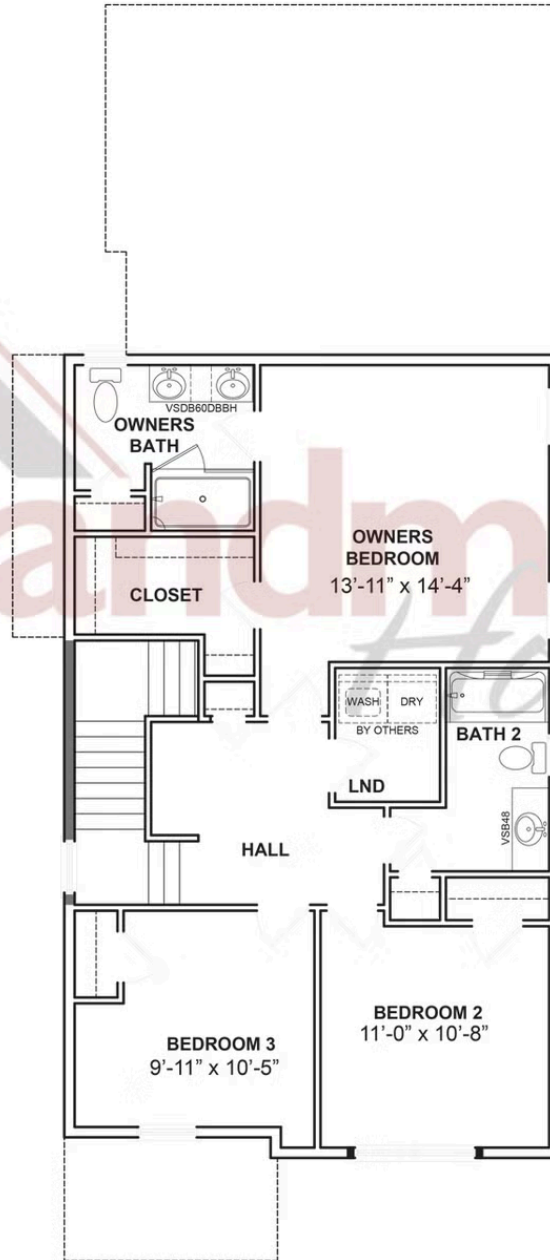


Single Family  
**2505 Hawthorne Drive**  
Harrisburg, PA 17110

**COMMUNITY SALES MANAGER**

Brittany Holtz  
Call/Text 717-327-1733

## SECOND FLOOR



© 2025 Landmark Builders, Inc. We enforce our intellectual property rights to the fullest extent permitted by applicable law. Elevations and landscaping are artists' conceptions only. Floor plans may vary depending on elevation selected. Actual construction documents take precedence over artwork.

