



Single Family
2424 Hawthorne Drive
Harrisburg, PA 17110

COMMUNITY SALES MANAGER

Brittany Holtz
Call/Text 717-327-1733

MOVE-IN READY



Home Priced at
\$514,900

Plan: Grayson

4 Bedrooms

2.5 Bathrooms

2,451 Sq. Ft.

Charming 2-story home with a 2-car, rear-load garage, a mudroom entry complete with built in lockers, and 9' ceilings on the first floor. Upon entry is the family room warmed by a fireplace with floor to ceiling stone and a carpeted flex space that can be used as an office or den. The kitchen features enhanced appliances, quartz countertops with a tile backsplash, and a beautiful island for entertaining guests. The ample dining area opens to a patio through sliding glass doors. On the 2nd floor, the spacious owner's suite with a cathedral ceiling features an expansive closet and a private bath with a double bowl vanity, tile shower, and built-in bench. Adjacent to the suite are 3 additional bedrooms, a full bathroom, and a convenient laundry room. The community features 19 acres of green space, walkability to restaurants, community events, etc. and is convenient to Harrisburg, Hershey, and major highways. (The floor plan shown represents the standard layout for this home plan. Actual layout, features, and options may vary. Construction plans take precedence over artwork. Please see the Community Sales Manager for details.)



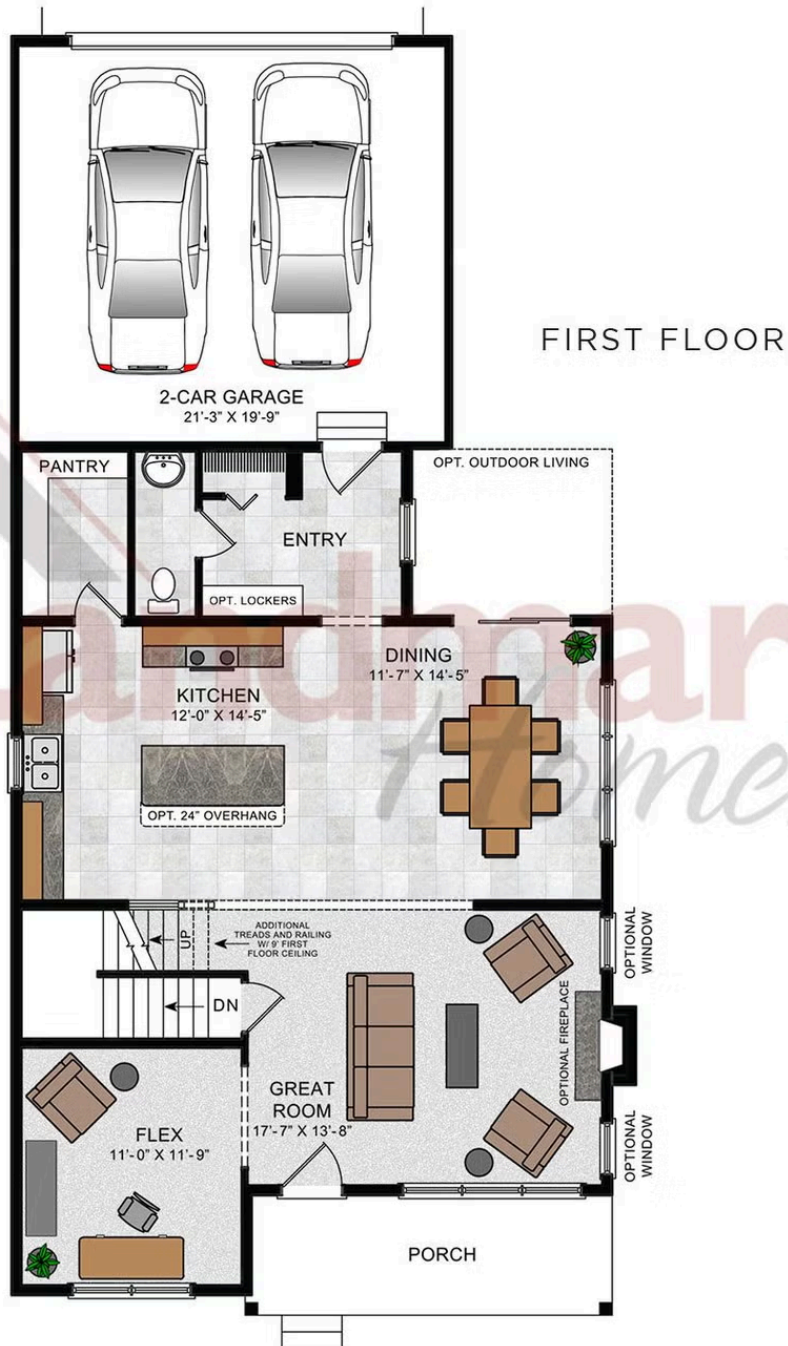


Single Family
2424 Hawthorne Drive
Harrisburg, PA 17110

COMMUNITY SALES MANAGER

Brittany Holtz
Call/Text 717-327-1733

Grayson





Single Family
2424 Hawthorne Drive
Harrisburg, PA 17110

COMMUNITY SALES MANAGER

Brittany Holtz
Call/Text 717-327-1733

Grayson



SECOND FLOOR

