



Single Family
Westbrooke
Wyndale

COMMUNITY SALES MANAGER

Katie Will

Call/Text 717-824-7942



Priced From
\$604,600

3 Elevations Available

4 Bedrooms

2.5 Bathrooms

2,868+ Sq. Ft.

2 Car Garage

Distinguished, elegant exterior offers a timeless design with all the amenities you need for your busy lifestyle. The ample eat-in kitchen features abundant countertops and cabinets. Open and spacious family room perfect for entertaining or growing families. Many custom features at attainable prices.

Available Elevations



Upgraded C Trademark



Upgraded B Transitional



Upgraded A Traditional



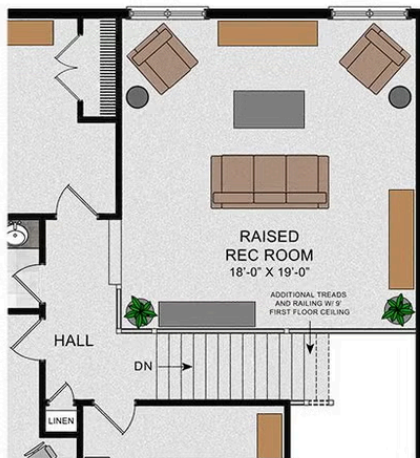


© 2023 Landmark Builders, Inc. We enforce our intellectual property rights to the fullest extent permitted by applicable law. Elevations and landscaping are artists' conceptions only. Floor plans may vary depending on elevation selected. Actual construction documents take precedence over artwork.

SECOND FLOOR



OPT. RAISED REC ROOM



OPT. BATH 3 LAYOUT



© 2023 Landmark Builders, Inc. We enforce our intellectual property rights to the fullest extent permitted by applicable law. Elevations and landscaping are artists' conceptions only. Floor plans may vary depending on elevation selected. Actual construction documents take precedence over artwork.