



Single Family
108 Wyndale Drive
Ephrata, PA 17522

COMMUNITY SALES MANAGER

Katie Will

Call/Text 717-824-7942

MODEL HOME



Call for Price

Plan: Logan

4 Bedrooms

3.5 Bathrooms

3,798 Sq. Ft.

Model Home/Not Listed for Sale: Striking model home features a stylish exterior, 2-car garage with mudroom entry, and 9' ceilings on the first floor. A 2-story foyer creates a dramatic first impression and beautiful vinyl plank flooring flows from the foyer throughout the main living areas. The formal dining room is accented with a custom wood trim detail and opens to a butler's pantry, perfect for entertaining. The great room feels extra roomy with its 10ft ceiling. A stunning focal point of the room is the gas fireplace with floor to ceiling stone and built in shelving on either side. Enhanced cabinetry and appliances, quartz countertops and backsplash, and two large islands adorn the spacious kitchen. Adjacent to the kitchen is a sunny morning room with sliding glass door access to a screened in porch, perfect for relaxing or entertaining. The 1st floor also features a study tucked quietly to the back of the home. On the 2nd floor, the owner's bedroom feels spacious with a cathedral ceiling and opens to a private bathroom complete with a tile shower, two vanities, a freestanding tub and an expansive closet. There are 3 additional bedrooms with enlarged closets, 2 full bathrooms including a Jack and Jill bathroom, and a convenient laundry room.





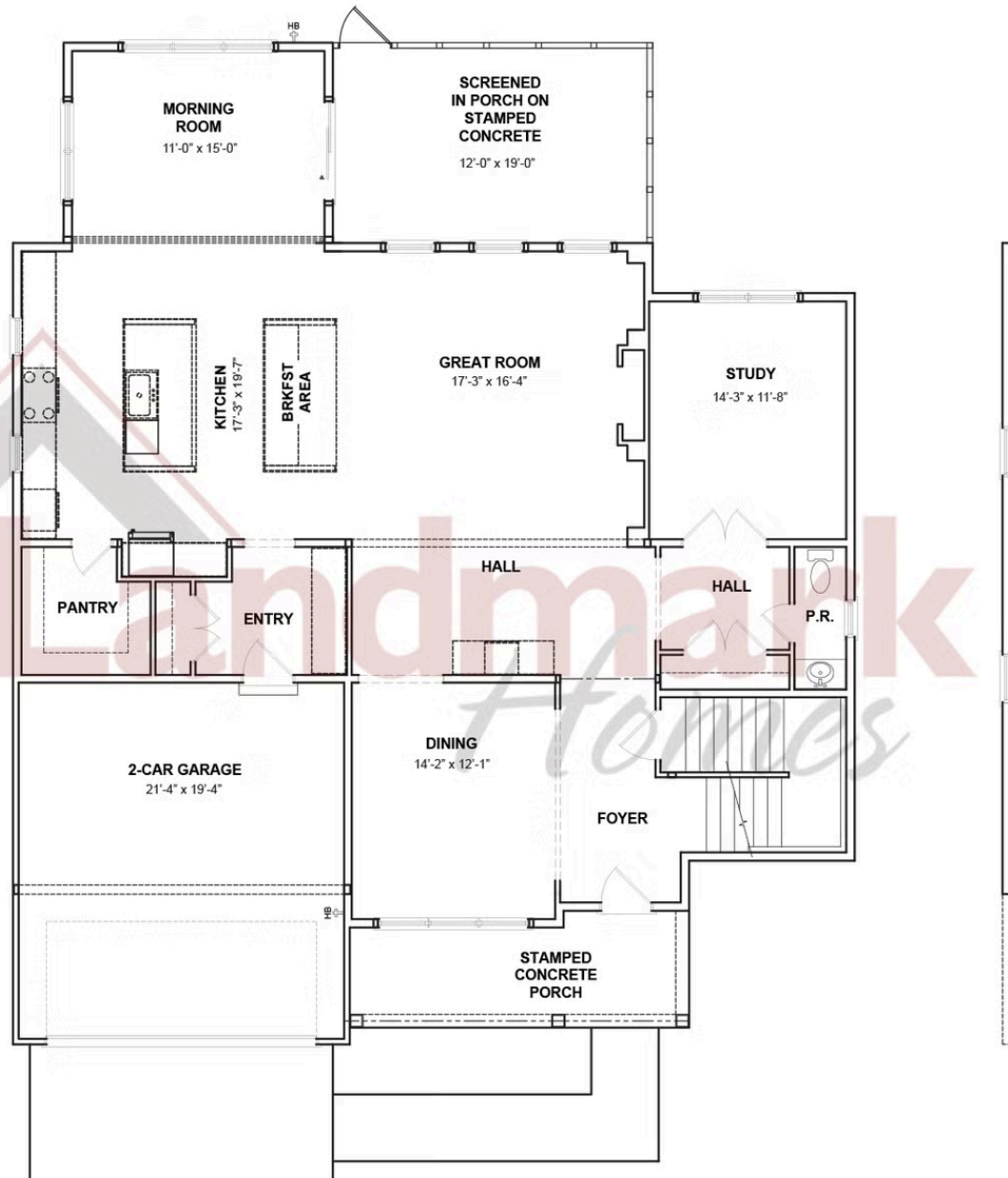
Single Family
108 Wyndale Drive
Ephrata, PA 17522

COMMUNITY SALES MANAGER

Katie Will

Call/Text 717-824-7942

FIRST FLOOR



© 2025 Landmark Builders, Inc. We enforce our intellectual property rights to the fullest extent permitted by applicable law. Elevations and landscaping are artists' conceptions only. Floor plans may vary depending on elevation selected. Actual construction documents take precedence over artwork.





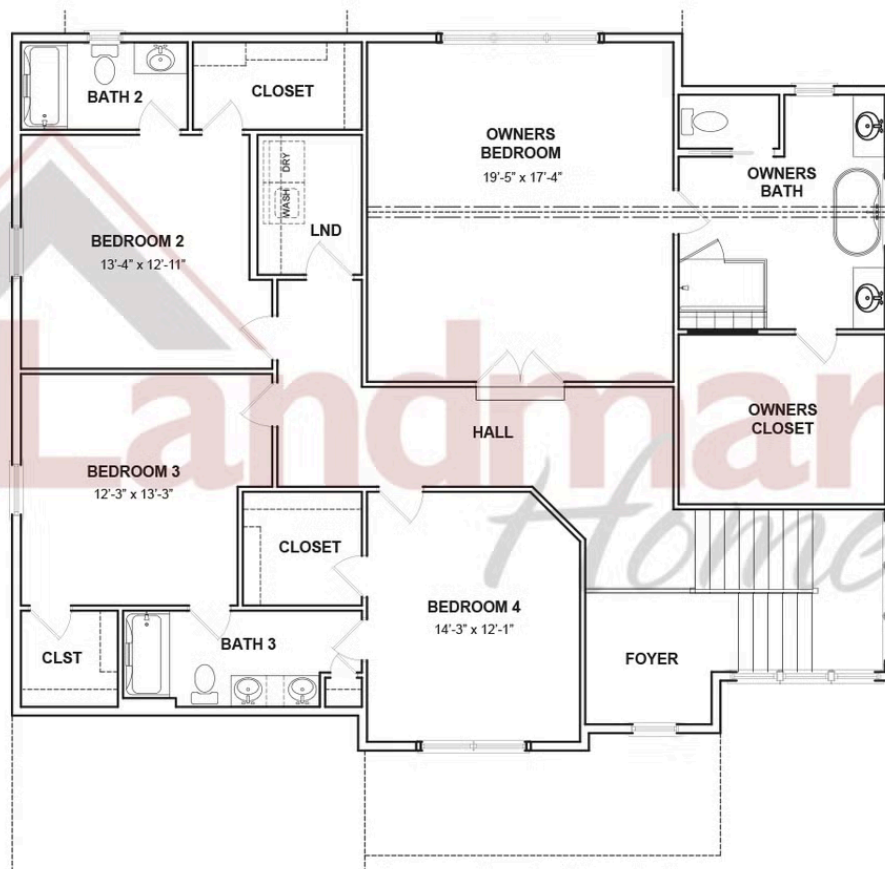
Single Family
108 Wyndale Drive
Ephrata, PA 17522

COMMUNITY SALES MANAGER

Katie Will

Call/Text 717-824-7942

SECOND FLOOR



© 2025 Landmark Builders, Inc. We enforce our intellectual property rights to the fullest extent permitted by applicable law. Elevations and landscaping are artists' conceptions only. Floor plans may vary depending on elevation selected. Actual construction documents take precedence over artwork.

