



Townhome
77 N Conifer Dr
Elizabethtown, PA 17022

COMMUNITY SALES MANAGER

Katie Will

Call/Text 717-824-7942

MOVE-IN READY



Home Priced at
\$330,800

Plan: Percy

3 Bedrooms

2.5 Bathrooms

1,553 Sq. Ft.

This comfortable 2-story townhome includes a 1-car, rear load garage and 9' ceilings on the first floor. Stylish vinyl plank flooring flows throughout the first floor. The sunny family room opens to the kitchen and dining area. The kitchen is well-appointed with stainless steel appliances and quartz countertops. On the second floor, the owner's suite features an expansive closet and a private bathroom. Adjacent to the suite are two additional bedrooms, a full bathroom, laundry closet, and loft.

Document generated 12/24/25

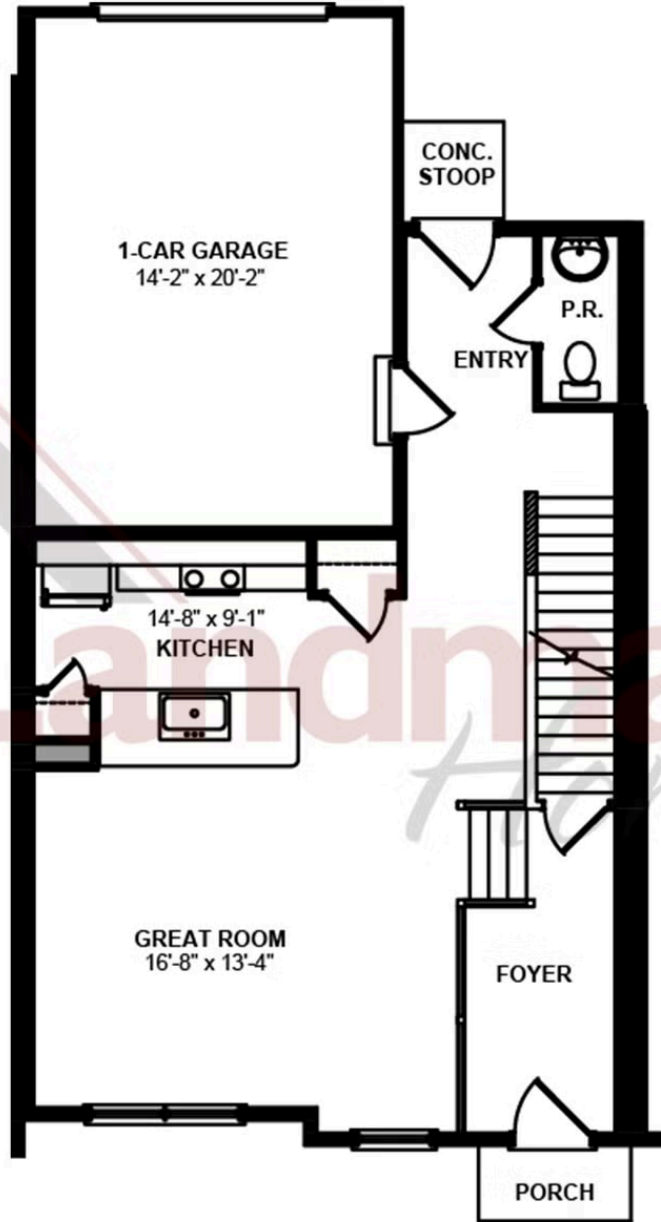
Call/Text Anytime (717) 283-5790

info@ownalandmark.com

OwnALandmark.com

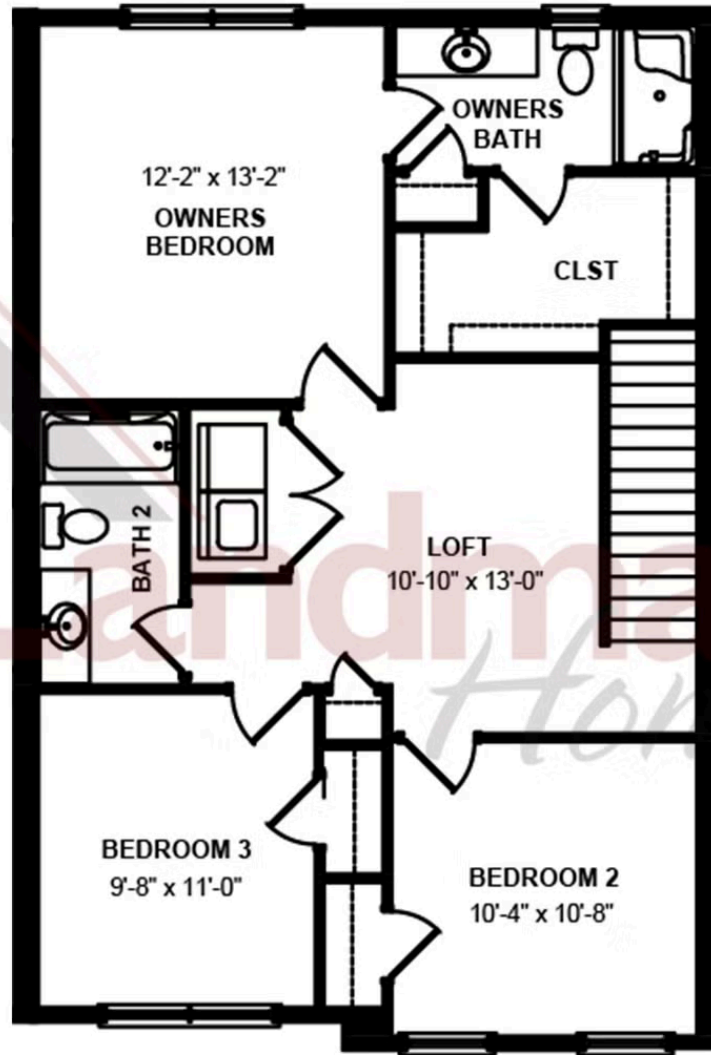


FIRST FLOOR - RIGHT



© 2025 Landmark Builders, Inc. We enforce our intellectual property rights to the fullest extent permitted by applicable law. Elevations and landscaping are artists' conceptions only. Floor plans may vary depending on elevation selected. Actual construction documents take precedence over artwork.

SECOND FLOOR - LEFT



© 2025 Landmark Builders, Inc. We enforce our intellectual property rights to the fullest extent permitted by applicable law. Elevations and landscaping are artists' conceptions only. Floor plans may vary depending on elevation selected. Actual construction documents take precedence over artwork.