



Representative Photo Only

Home Priced at \$322,800

PERCY



BEDROOMS: 3



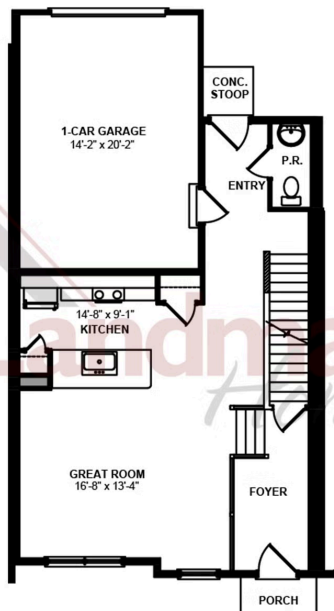
BATHROOMS: 2.5



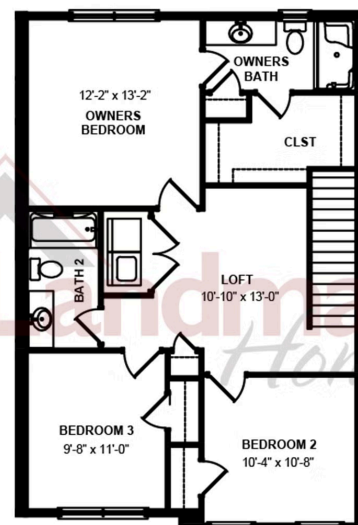
SQ FT: 1,553

Meridian Heights | 49 N Conifer Dr, Elizabethtown, PA 17022 | Homesite: #4C4

FIRST FLOOR - RIGHT



SECOND FLOOR - LEFT



© 2025 Landmark Builders, Inc. We enforce our intellectual property rights to the fullest extent permitted by applicable law. Elevations and landscaping are artists' conceptions only. Floor plans may vary depending on elevation selected. Actual construction documents take precedence over artwork.

© 2025 Landmark Builders, Inc. We enforce our intellectual property rights to the fullest extent permitted by applicable law. Elevations and landscaping are artists' conceptions only. Floor plans may vary depending on elevation selected. Actual construction documents take precedence over artwork.

© 2026 Landmark Builders, Inc. We enforce our intellectual property rights to the fullest extent permitted by applicable law. Elevations and landscaping are artists' conceptions only. Actual construction documents take precedence over artwork. Similar photos shown are for representative purposes only. Details subject to change without notification. See Community Sales Manager for details.

Document generated 4/24/26

