



Townhome  
**68 N Conifer Dr**  
Elizabethtown, PA 17022

**COMMUNITY SALES MANAGER**

Katie Will

Call/Text 717-824-7942

**SALE PENDING**



**SALE PENDING**

Plan: Dawson

3 Bedrooms

2.5 Bathrooms

1,803 Sq. Ft.

\* UNDER CONTRACT \* This comfortable 2-story townhome includes a 1-car, rear load garage, partially finished basement, and a composite deck. Stylish vinyl plank flooring flows throughout the first floor. The sunny family room opens to the kitchen and dining area. The kitchen is well-appointed with stainless steel appliances and quartz countertops. On the second floor, the owner's suite features an expansive closet and a private bathroom. Adjacent to the suite are two additional bedrooms, a full bathroom, and a laundry closet.





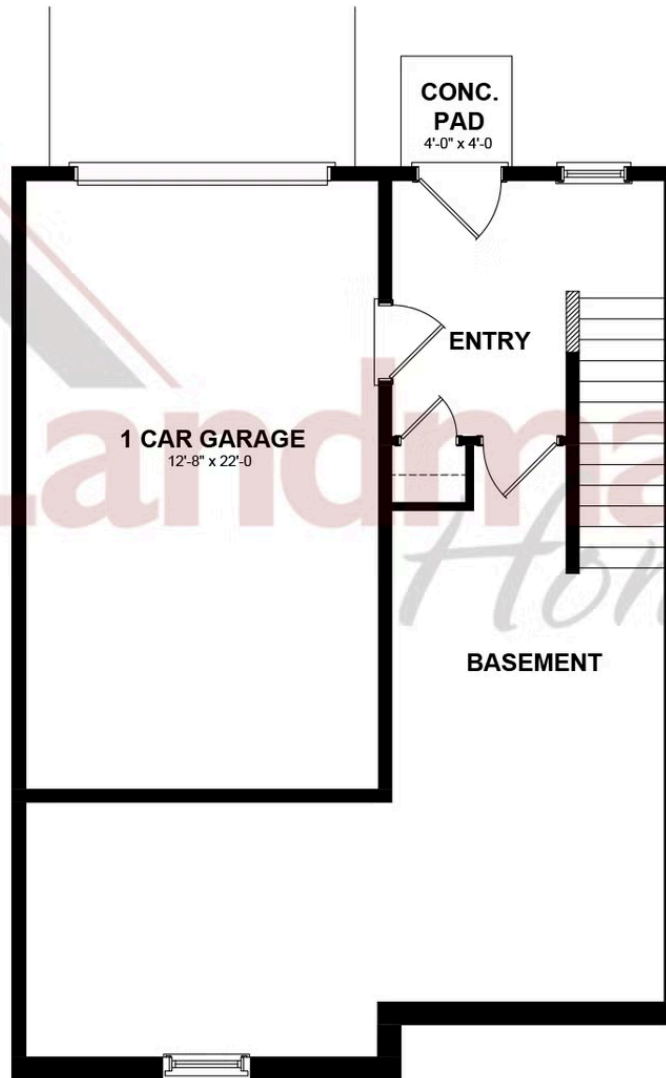
Townhome  
**68 N Conifer Dr**  
Elizabethtown, PA 17022

**COMMUNITY SALES MANAGER**

Katie Will

Call/Text 717-824-7942

## BASEMENT LEVEL



© 2025 Landmark Builders, Inc. We enforce our intellectual property rights to the fullest extent permitted by applicable law. Elevations and landscaping are artists' conceptions only. Floor plans may vary depending on elevation selected. Actual construction documents take precedence over artwork.





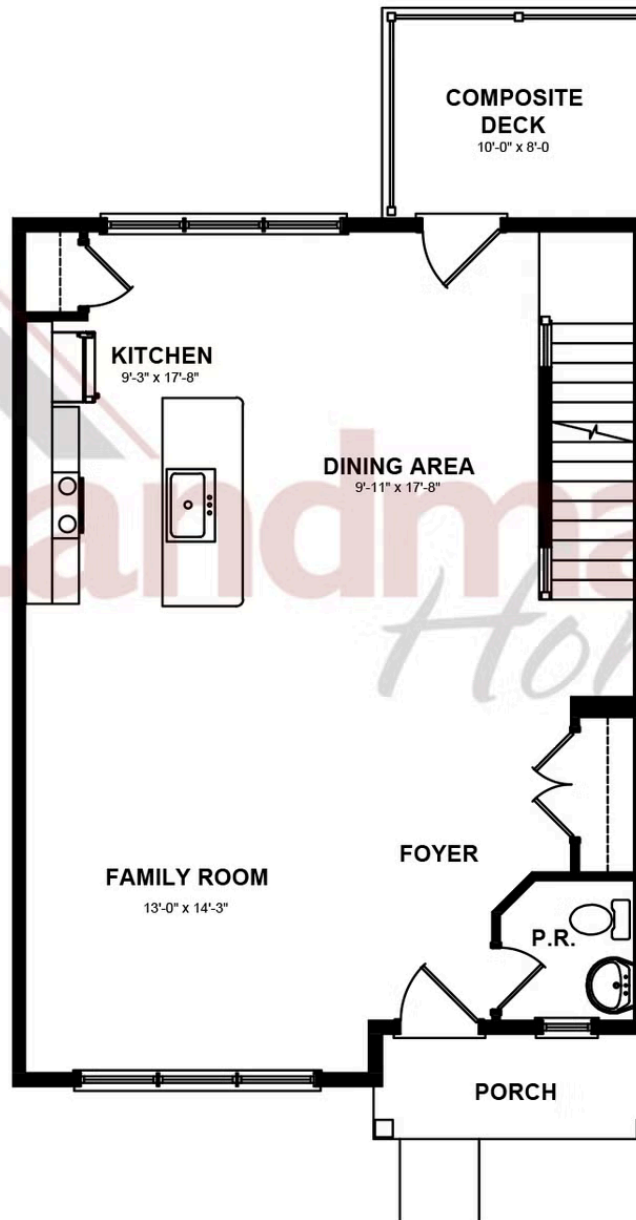
Townhome  
**68 N Conifer Dr**  
Elizabethtown, PA 17022

**COMMUNITY SALES MANAGER**

Katie Will

Call/Text 717-824-7942

## FIRST FLOOR

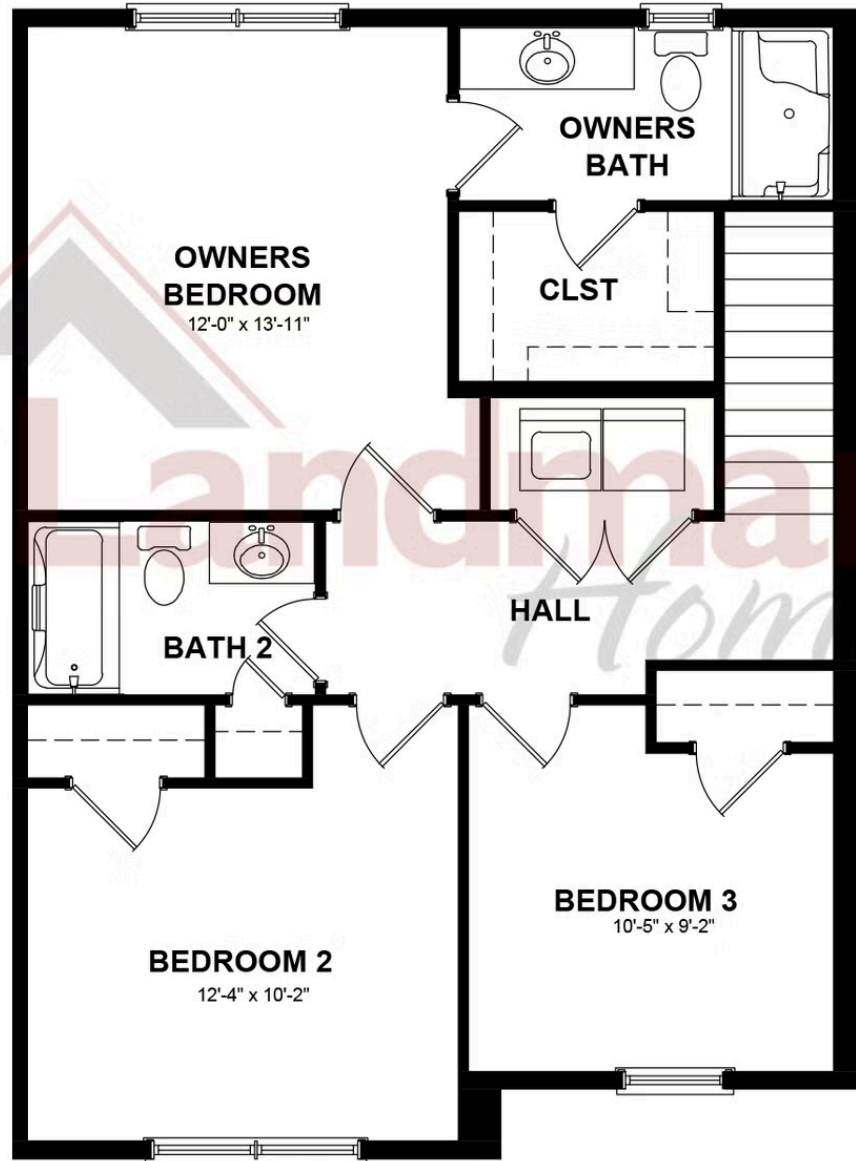


© 2025 Landmark Builders, Inc. We enforce our intellectual property rights to the fullest extent permitted by applicable law. Elevations and landscaping are artists' conceptions only. Floor plans may vary depending on elevation selected. Actual construction documents take precedence over artwork.

Document generated 2/22/26



SECOND FLOOR



© 2025 Landmark Builders, Inc. We enforce our intellectual property rights to the fullest extent permitted by applicable law. Elevations and landscaping are artists' conceptions only. Floor plans may vary depending on elevation selected. Actual construction documents take precedence over artwork.