



Representative Photo Only

Home Priced at \$373,400

DAWSON



BEDROOMS: 3



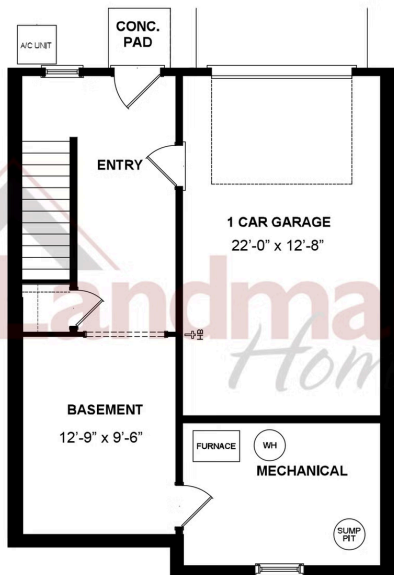
BATHROOMS: 2.5



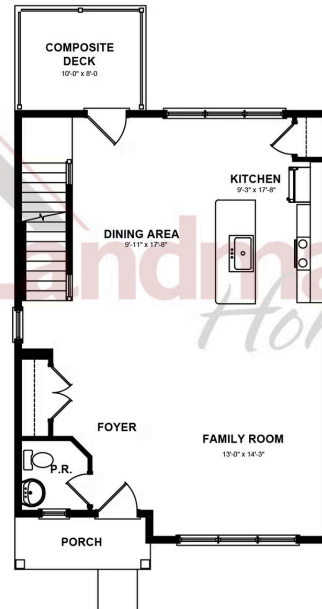
SQ FT: 1,879

Meridian Heights | 46 N Conifer Drive, Elizabethtown, PA 17022 | Homesite: #4B6

BASEMENT LEVEL



FIRST FLOOR



SECOND FLOOR



© 2025 Landmark Builders, Inc. We enforce our intellectual property rights to the fullest extent permitted by applicable law. Elevations and landscaping are artists' conceptions only. Floor plans may vary depending on elevation selected. Actual construction documents take precedence over artwork.

© 2025 Landmark Builders, Inc. We enforce our intellectual property rights to the fullest extent permitted by applicable law. Elevations and landscaping are artists' conceptions only. Floor plans may vary depending on elevation selected. Actual construction documents take precedence over artwork.

Document generated 5/14/26

