



Townhome

46 N Conifer Drive

Elizabethtown, PA 17022

COMMUNITY SALES MANAGER

Katie Will

Call/Text 717-824-7942

UNDER CONSTRUCTION



Home Priced at

\$373,400

Plan: Dawson

3 Bedrooms

2.5 Bathrooms

1,879 Sq. Ft.

UNDER CONSTRUCTION – AVAILABLE THIS SPRING: This comfortable 2-story, end-of-row townhome includes a 1-car, rear load garage, partially finished basement, and a composite deck. Stylish vinyl plank flooring flows throughout the first floor. The sunny family room opens to the kitchen and dining area. The kitchen is well-appointed with stainless steel appliances and quartz countertops. On the second floor, the owner's suite features an expansive closet and a private bathroom. Adjacent to the suite are two additional bedrooms, a full bathroom, and a laundry closet.





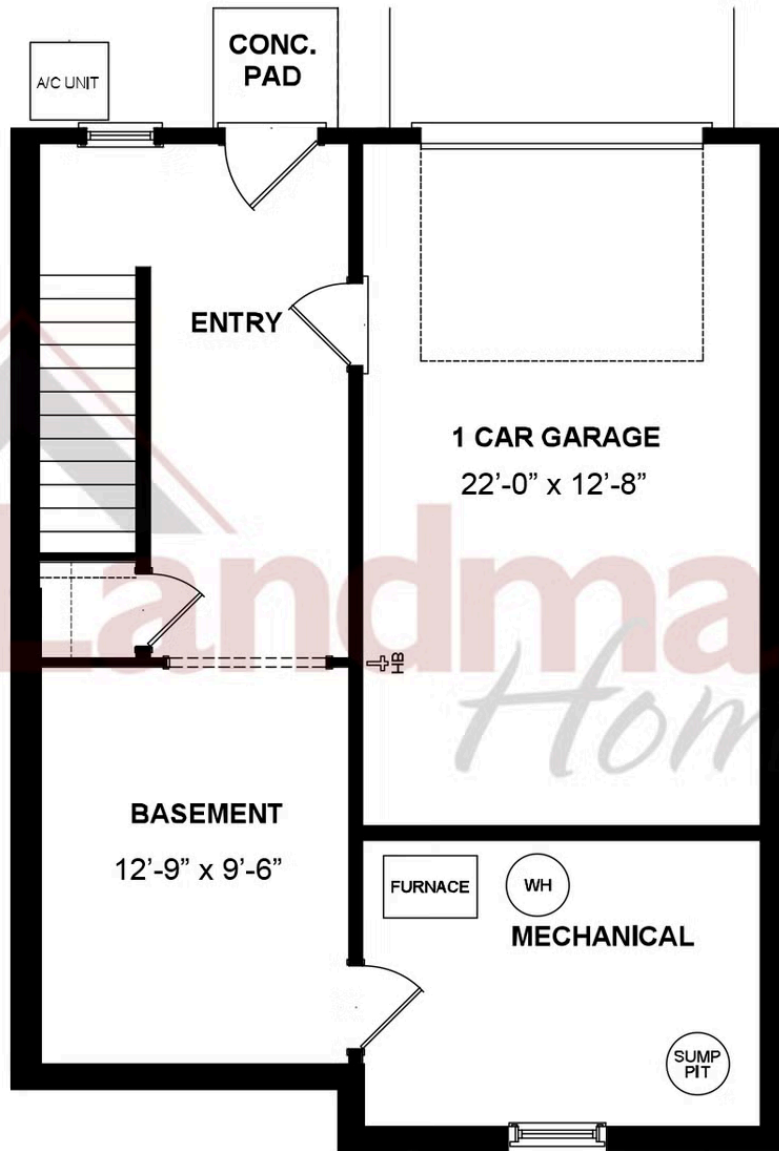
Townhome
46 N Conifer Drive
Elizabethtown, PA 17022

COMMUNITY SALES MANAGER

Katie Will

Call/Text 717-824-7942

BASEMENT LEVEL



© 2025 Landmark Builders, Inc. We enforce our intellectual property rights to the fullest extent permitted by applicable law. Elevations and landscaping are artists' conceptions only. Floor plans may vary depending on elevation selected. Actual construction documents take precedence over artwork.

Document generated 12/20/25





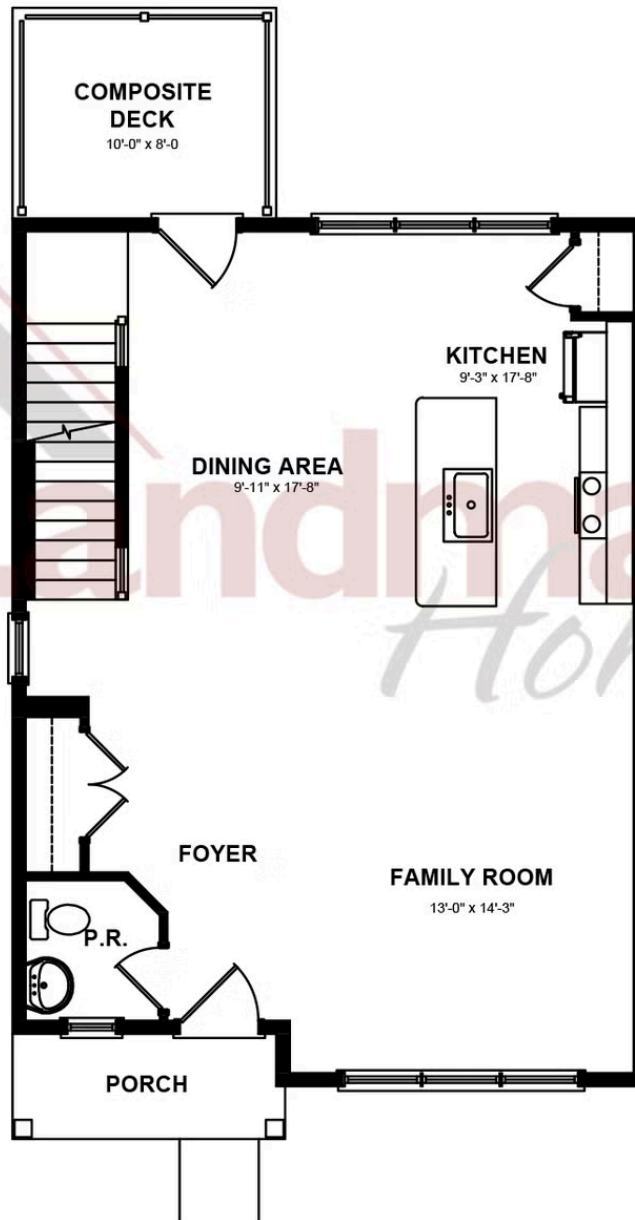
Townhome
46 N Conifer Drive
Elizabethtown, PA 17022

COMMUNITY SALES MANAGER

Katie Will

Call/Text 717-824-7942

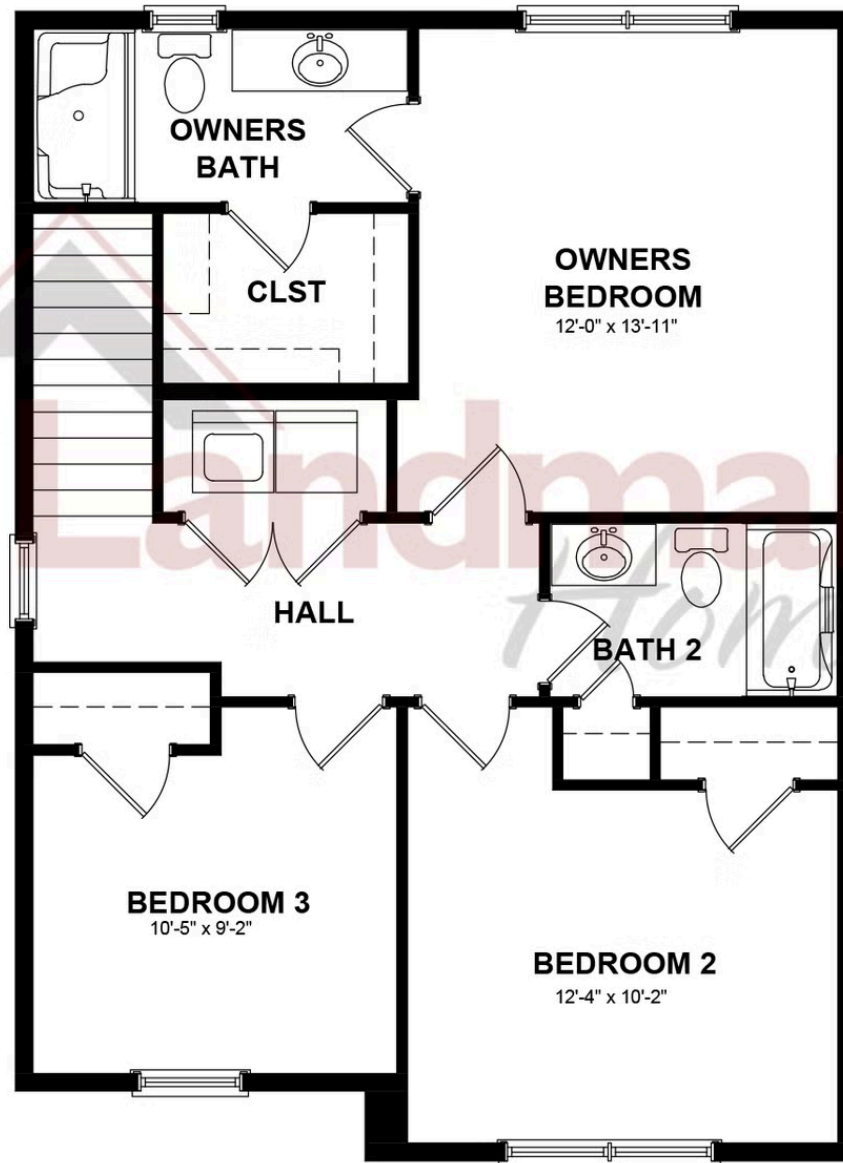
FIRST FLOOR



© 2025 Landmark Builders, Inc. We enforce our intellectual property rights to the fullest extent permitted by applicable law. Elevations and landscaping are artists' conceptions only. Floor plans may vary depending on elevation selected. Actual construction documents take precedence over artwork.



SECOND FLOOR



© 2025 Landmark Builders, Inc. We enforce our intellectual property rights to the fullest extent permitted by applicable law. Elevations and landscaping are artists' conceptions only. Floor plans may vary depending on elevation selected. Actual construction documents take precedence over artwork.