



Townhome

44 N Conifer Drive

Elizabethtown, PA 17022

COMMUNITY SALES MANAGER

Katie Will

Call/Text 717-824-7942

UNDER CONSTRUCTION



Home Priced at

\$356,200

Plan: Dawson

3 Bedrooms

2.5 Bathrooms

1,680 Sq. Ft.

UNDER CONSTRUCTION – AVAILABLE THIS SPRING: This charming 2-story townhome includes a 1-car, rear load garage, 9' ceilings on the first floor, and a composite deck. Stylish vinyl plank flooring flows throughout the first floor. The foyer opens to an elegant dining room that also has access into the kitchen. The kitchen, well-appointed with stainless steel appliances and quartz countertops, opens to the sunny, spacious family room. On the second floor, the owner's suite features an expansive closet and a private bathroom. Adjacent to the suite are two additional bedrooms, a full bathroom, and a laundry closet.





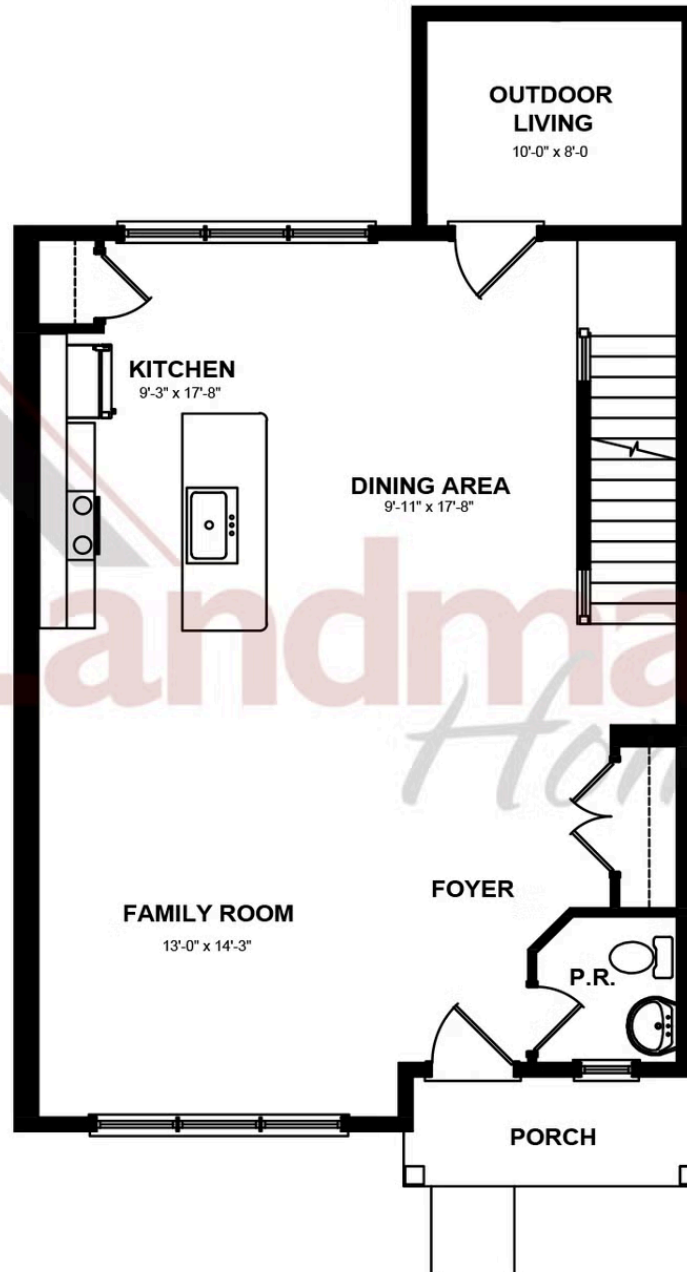
Townhome
44 N Conifer Drive
Elizabethtown, PA 17022

COMMUNITY SALES MANAGER

Katie Will

Call/Text 717-824-7942

FIRST FLOOR



© 2025 Landmark Builders, Inc. We enforce our intellectual property rights to the fullest extent permitted by applicable law. Elevations and landscaping are artists' conceptions only. Floor plans may vary depending on elevation selected. Actual construction documents take precedence over artwork.





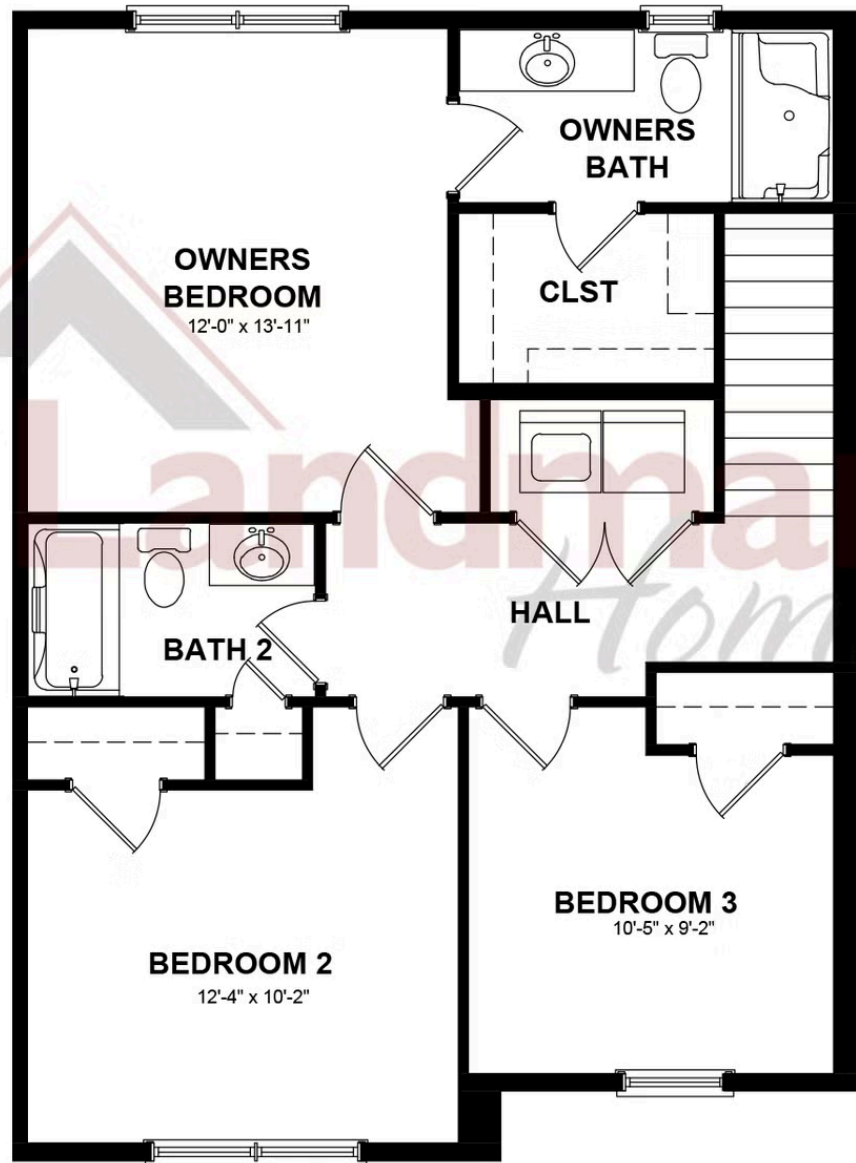
Townhome
44 N Conifer Drive
Elizabethtown, PA 17022

COMMUNITY SALES MANAGER

Katie Will

Call/Text 717-824-7942

SECOND FLOOR



© 2025 Landmark Builders, Inc. We enforce our intellectual property rights to the fullest extent permitted by applicable law. Elevations and landscaping are artists' conceptions only. Floor plans may vary depending on elevation selected. Actual construction documents take precedence over artwork.

Document generated 12/20/25





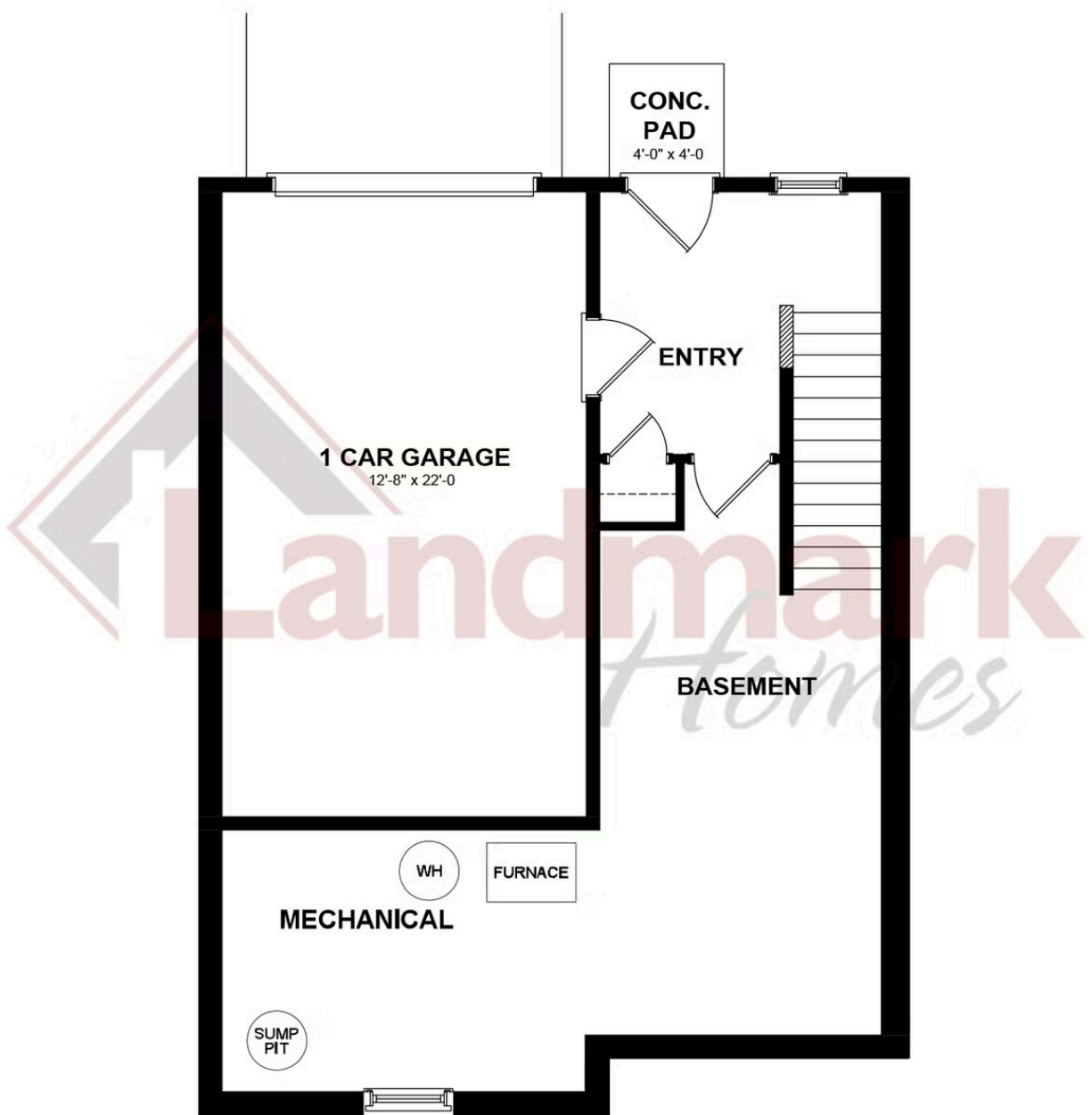
Townhome
44 N Conifer Drive
Elizabethtown, PA 17022

COMMUNITY SALES MANAGER

Katie Will

Call/Text 717-824-7942

BASEMENT LEVEL



© 2025 Landmark Builders, Inc. We enforce our intellectual property rights to the fullest extent permitted by applicable law. Elevations and landscaping are artists' conceptions only. Floor plans may vary depending on elevation selected. Actual construction documents take precedence over artwork.

