



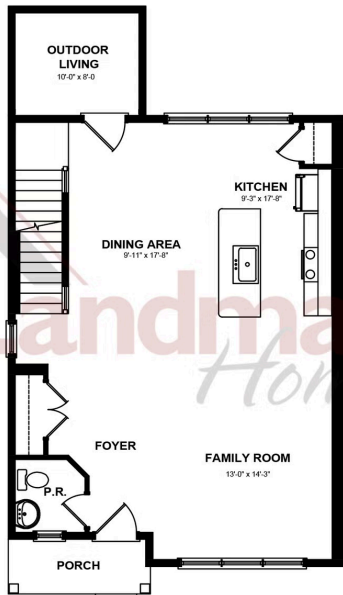
Representative Photo Only

**Home Priced at \$351,000**

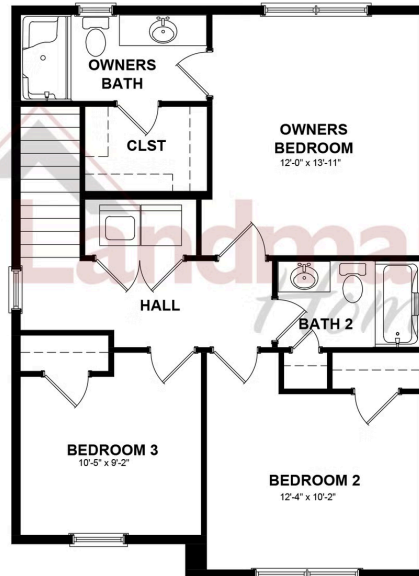
**DAWSON**    **BEDROOMS: 3**    **BATHROOMS: 2.5**    **SQ FT: 1,680**

**Meridian Heights | 42 N Conifer Drive, Elizabethtown, PA 17022 | Homesite: #4B4**

FIRST FLOOR



SECOND FLOOR



BASEMENT LEVEL



© 2025 Landmark Builders, Inc. We enforce our intellectual property rights to the fullest extent permitted by applicable law. Elevations and landscaping are artists' conceptions only. Floor plans may vary depending on elevation selected. Actual construction documents take precedence over artwork.

© 2025 Landmark Builders, Inc. We enforce our intellectual property rights to the fullest extent permitted by applicable law. Elevations and landscaping are artists' conceptions only. Floor plans may vary depending on elevation selected. Actual construction documents take precedence over artwork.

Document generated 5/30/26

