



Townhome
36 N Conifer Drive
Elizabethtown, PA 17022

COMMUNITY SALES MANAGER

Katie Will

Call/Text 717-824-7942

UNDER CONSTRUCTION



Representative Photo Only

Home Priced at
\$363,900

Plan: Dawson

3 Bedrooms

2.5 Bathrooms

1,680 Sq. Ft.

UNDER CONSTRUCTION – AVAILABLE THIS SPRING: This charming 2-story, end-of-row townhome includes a 1-car, rear load garage, 9' ceilings on the first floor, and a composite deck for outdoor living. Stylish vinyl plank flooring flows throughout the first floor. The foyer opens to a bright and open family room. The kitchen is well-appointed with stainless steel appliances, quartz countertops, and dining area. On the second floor, the owner's suite features an expansive closet and a private bathroom. Adjacent to the suite are two additional bedrooms, a full bathroom, and a laundry closet.





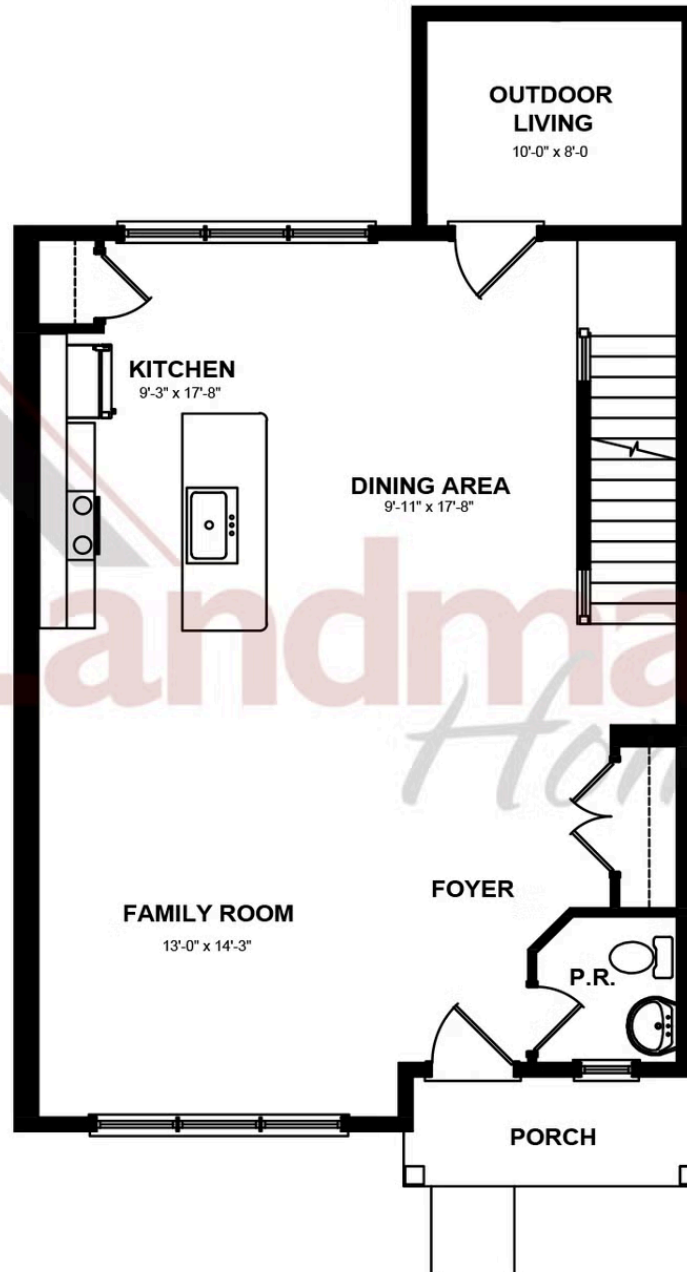
Townhome
36 N Conifer Drive
Elizabethtown, PA 17022

COMMUNITY SALES MANAGER

Katie Will

Call/Text 717-824-7942

FIRST FLOOR



© 2025 Landmark Builders, Inc. We enforce our intellectual property rights to the fullest extent permitted by applicable law. Elevations and landscaping are artists' conceptions only. Floor plans may vary depending on elevation selected. Actual construction documents take precedence over artwork.





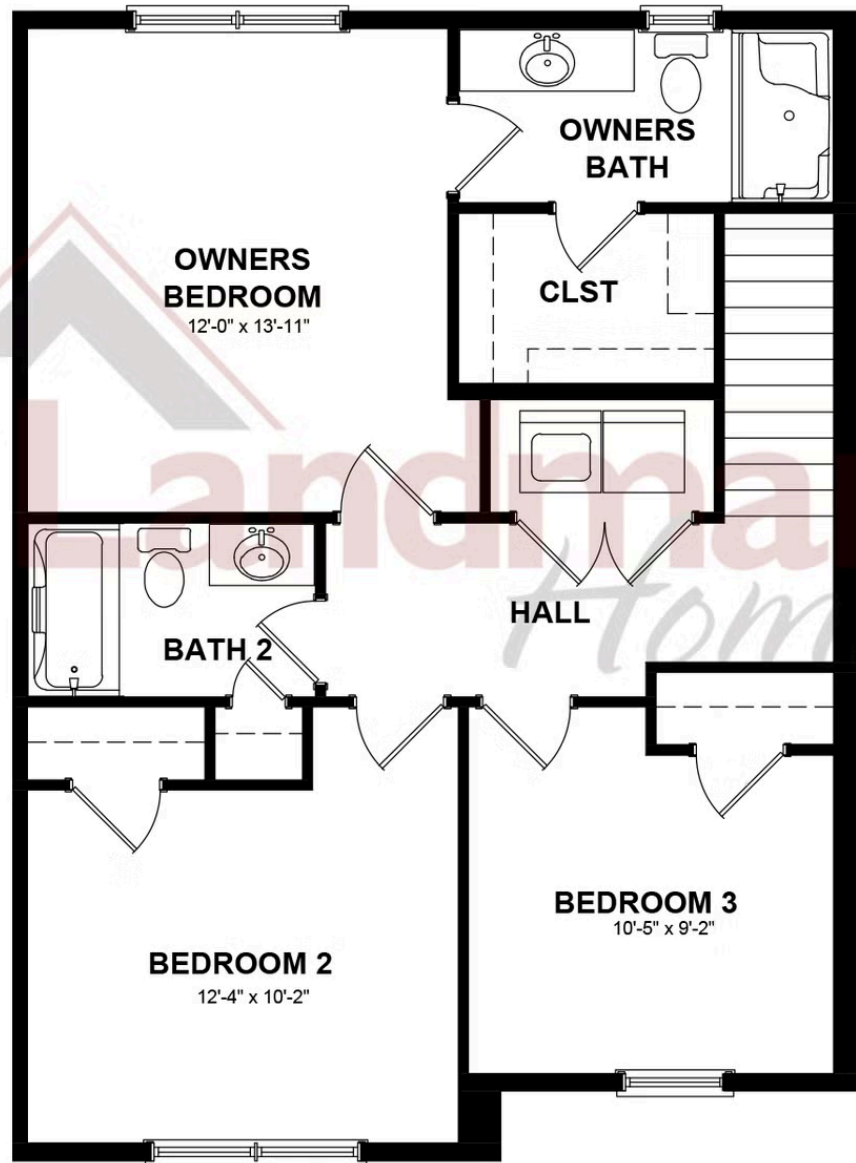
Townhome
36 N Conifer Drive
Elizabethtown, PA 17022

COMMUNITY SALES MANAGER

Katie Will

Call/Text 717-824-7942

SECOND FLOOR



© 2025 Landmark Builders, Inc. We enforce our intellectual property rights to the fullest extent permitted by applicable law. Elevations and landscaping are artists' conceptions only. Floor plans may vary depending on elevation selected. Actual construction documents take precedence over artwork.

Document generated 12/20/25





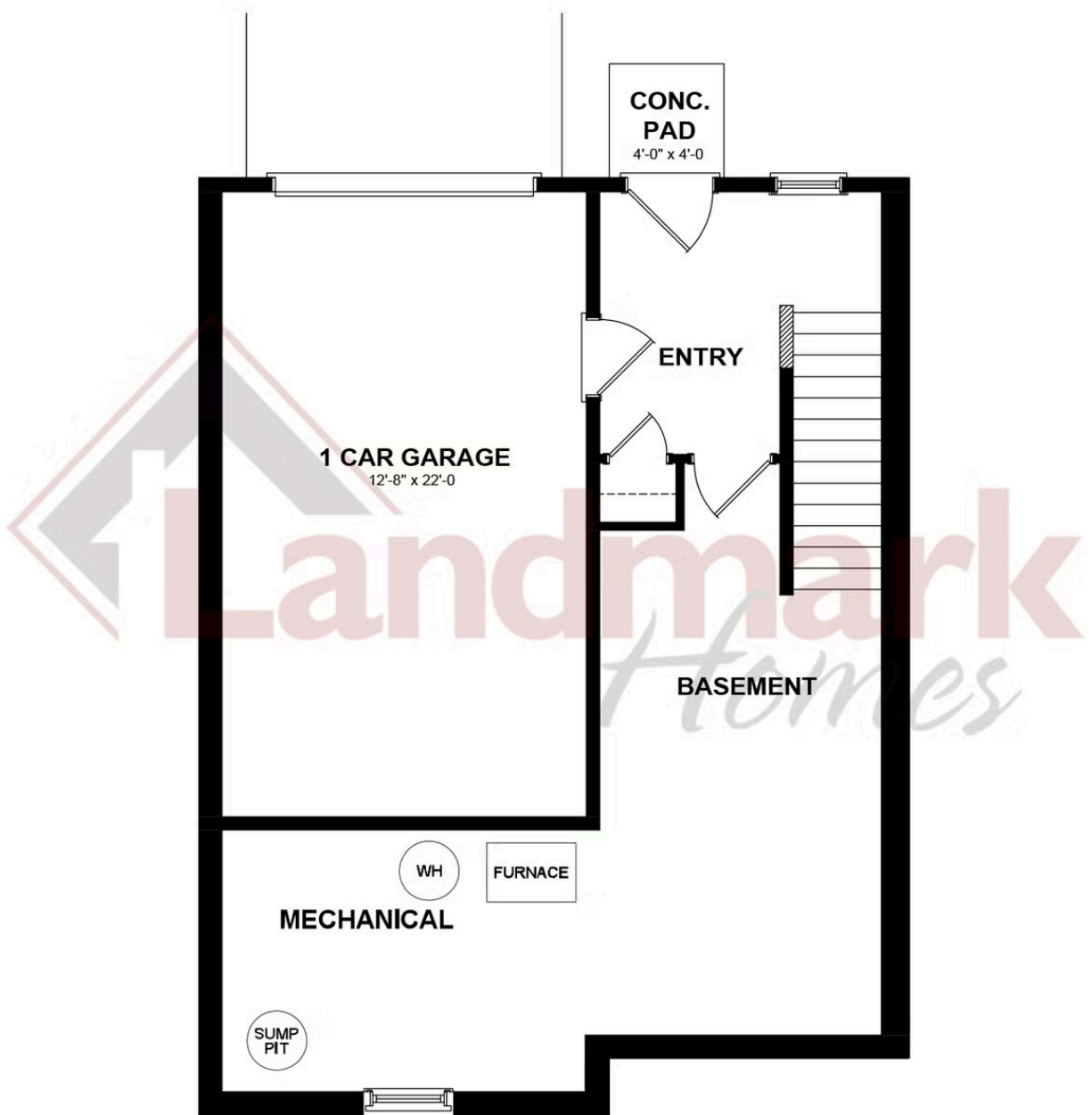
Townhome
36 N Conifer Drive
Elizabethtown, PA 17022

COMMUNITY SALES MANAGER

Katie Will

Call/Text 717-824-7942

BASEMENT LEVEL



© 2025 Landmark Builders, Inc. We enforce our intellectual property rights to the fullest extent permitted by applicable law. Elevations and landscaping are artists' conceptions only. Floor plans may vary depending on elevation selected. Actual construction documents take precedence over artwork.

