



Duplex
42 Glenn View
Carlisle, PA 17013

COMMUNITY SALES MANAGER

Dontell Robinson

Call/Text 717-669-2196

UNDER CONSTRUCTION



Home Priced at
\$389,900

Plan: Rowen

3 Bedrooms

2.5 Bathrooms

1,820 Sq. Ft.

UNDER CONSTRUCTION – AVAILABLE THIS WINTER: This 2-story duplex includes a 2-car garage, basement with outdoor access, and a deck for outdoor living. On the first floor, the spacious family room opens to the dining area and kitchen, featuring attractive cabinetry, quartz countertops and stainless-steel appliances. On the 2nd floor, the owner's suite includes a private bathroom and an expansive closet. Down the hall there are two additional bedrooms, a full bathroom, and a convenient laundry room.





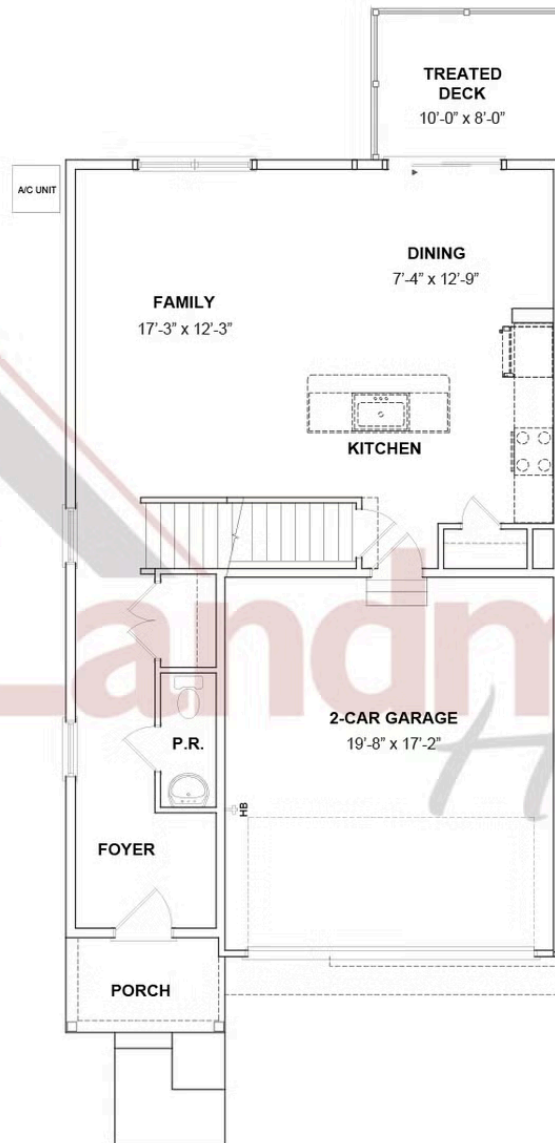
Duplex
42 Glenn View
Carlisle, PA 17013

COMMUNITY SALES MANAGER

Dontell Robinson

Call/Text 717-669-2196

FIRST FLOOR



© 2025 Landmark Builders, Inc. We enforce our intellectual property rights to the fullest extent permitted by applicable law. Elevations and landscaping are artists' conceptions only. Floor plans may vary depending on elevation selected. Actual construction documents take precedence over artwork.



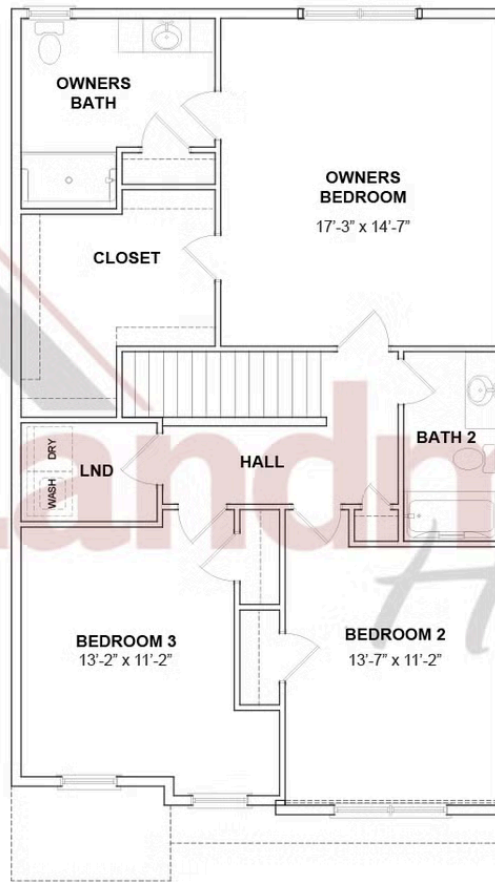


Duplex
42 Glenn View
Carlisle, PA 17013

COMMUNITY SALES MANAGER

Dontell Robinson
Call/Text 717-669-2196

SECOND FLOOR



© 2025 Landmark Builders, Inc. We enforce our intellectual property rights to the fullest extent permitted by applicable law. Elevations and landscaping are artists' conceptions only. Floor plans may vary depending on elevation selected. Actual construction documents take precedence over artwork.

