



Duplex
67 Glenn View
Carlisle, PA 17013

COMMUNITY SALES MANAGER

Dontell Robinson

Call/Text 717-669-2196

MOVE-IN READY



Home Priced at
\$347,400

Plan: Linden

3 Bedrooms

2.5 Bathrooms

1,854 Sq. Ft.

This charming 3-story townhome includes a 2-car garage, finished basement, and a patio for outdoor living. On the main level, the spacious living room flows effortlessly to the kitchen & dining. The kitchen features beautiful cabinetry with quartz countertops and tile backsplash, stainless-steel appliances, and center island. So much natural light shines in with large windows surrounding the sides and rear access to the patio & yard. On the 2nd floor, the owner's suite includes a private bathroom and an expansive closet. Two additional bedrooms, a full bathroom, and a laundry closet further complete the 2nd floor. Just minutes from downtown Carlisle and Mechanicsburg, The Village at North Ridge provides convenience with a tranquil peaceful environment with mountain views.

Document generated 2/22/26



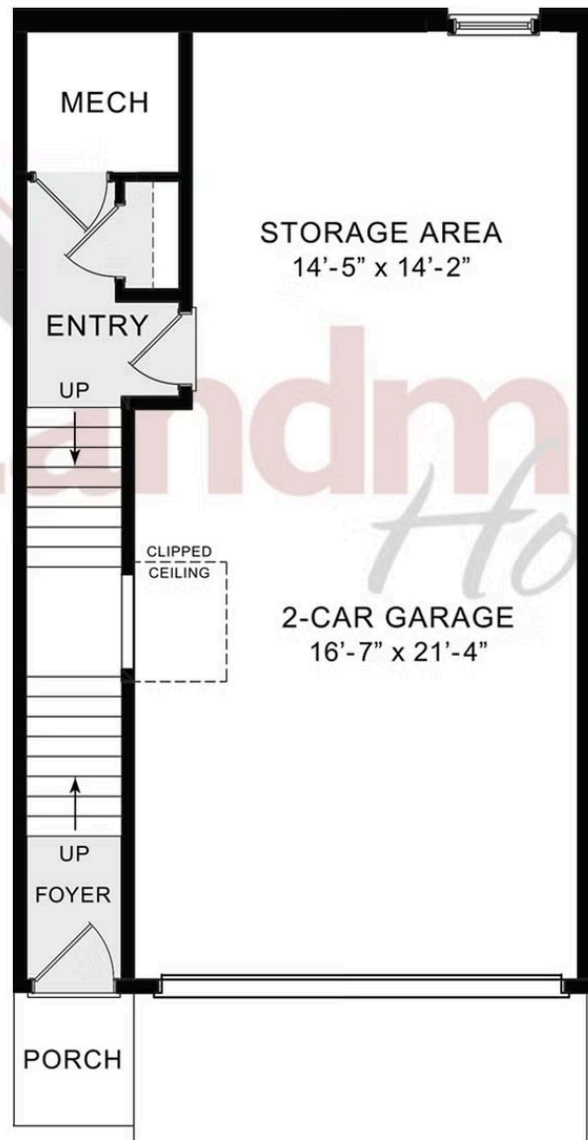


Duplex
67 Glenn View
Carlisle, PA 17013

COMMUNITY SALES MANAGER

Dontell Robinson
Call/Text 717-669-2196

FIRST FLOOR



© 2023 Landmark Builders, Inc. We enforce our intellectual property rights to the fullest extent permitted by applicable law. Elevations and landscaping are artists' conceptions only. Floor plans may vary depending on elevation selected. Actual construction documents take precedence over artwork.





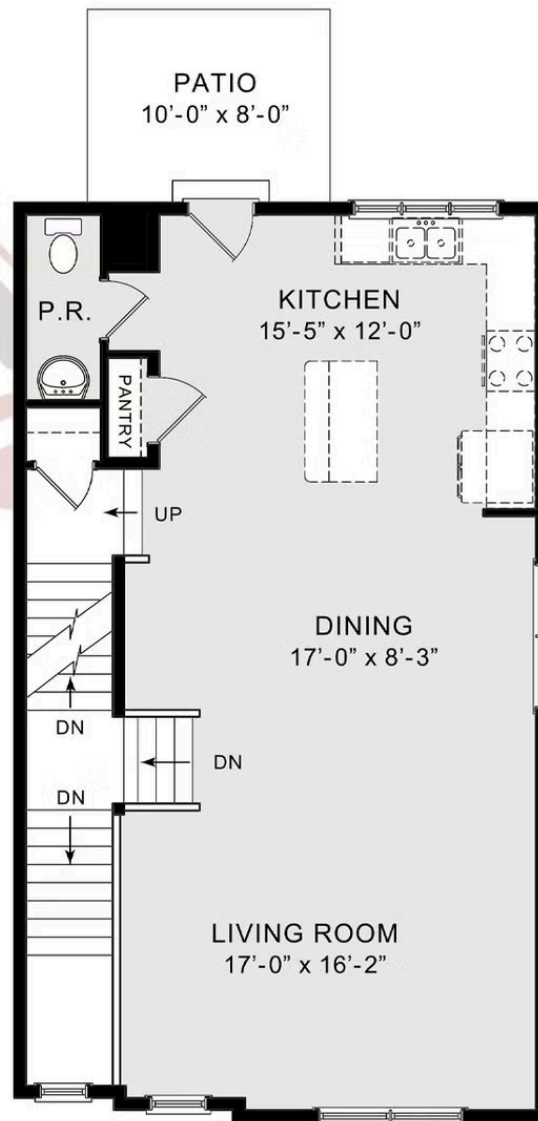
Duplex
67 Glenn View
Carlisle, PA 17013

COMMUNITY SALES MANAGER

Dontell Robinson

Call/Text 717-669-2196

SECOND FLOOR

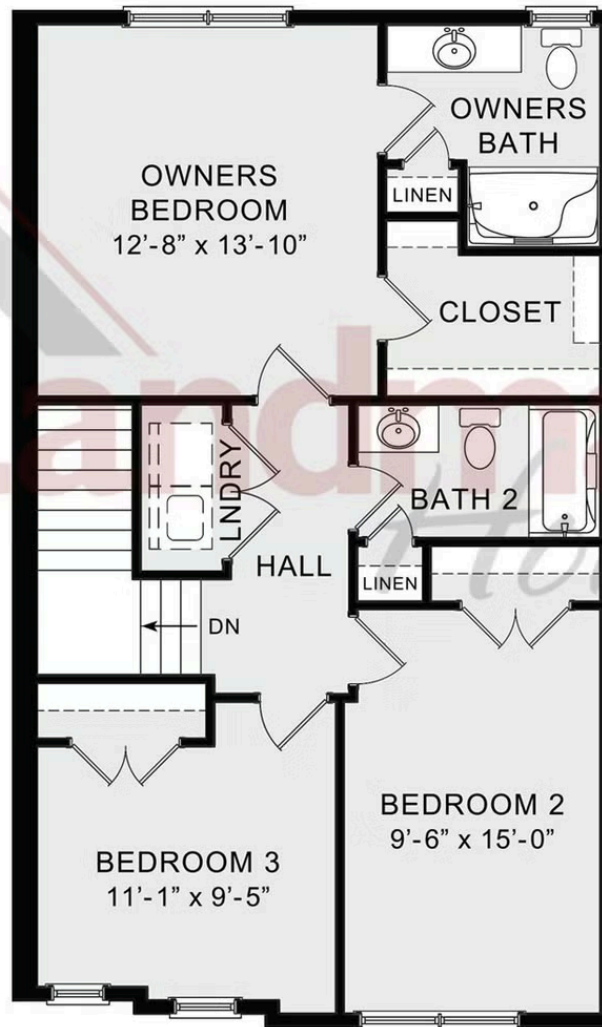


© 2024 Landmark Builders, Inc. We enforce our intellectual property rights to the fullest extent permitted by applicable law. Elevations and landscaping are artists' conceptions only. Floor plans may vary depending on elevation selected. Actual construction documents take precedence over artwork.

Document generated 2/22/26



THIRD FLOOR



© 2023 Landmark Builders, Inc. We enforce our intellectual property rights to the fullest extent permitted by applicable law. Elevations and landscaping are artists' conceptions only. Floor plans may vary depending on elevation selected. Actual construction documents take precedence over artwork.