



Single Family
Wesley
Mountain View Estates

COMMUNITY SALES MANAGER

Dontell Robinson

Call/Text 717-669-2196



Priced From
\$528,700

3 Elevations Available

4 Bedrooms

2.5 Bathrooms

2,612+ Sq. Ft.

2 Car Garage

Spacious home with room to grow, including 4 bedrooms and 2.5 baths. Generous owner's suite with private bathroom and large closet. Optional bonus room over the garage for study/den. Eat-in kitchen with breakfast area and access to formal dining room makes entertaining a breeze. Oversized family room with access to patio.

Available Elevations



Upgraded B Transitional



Upgraded C Trademark

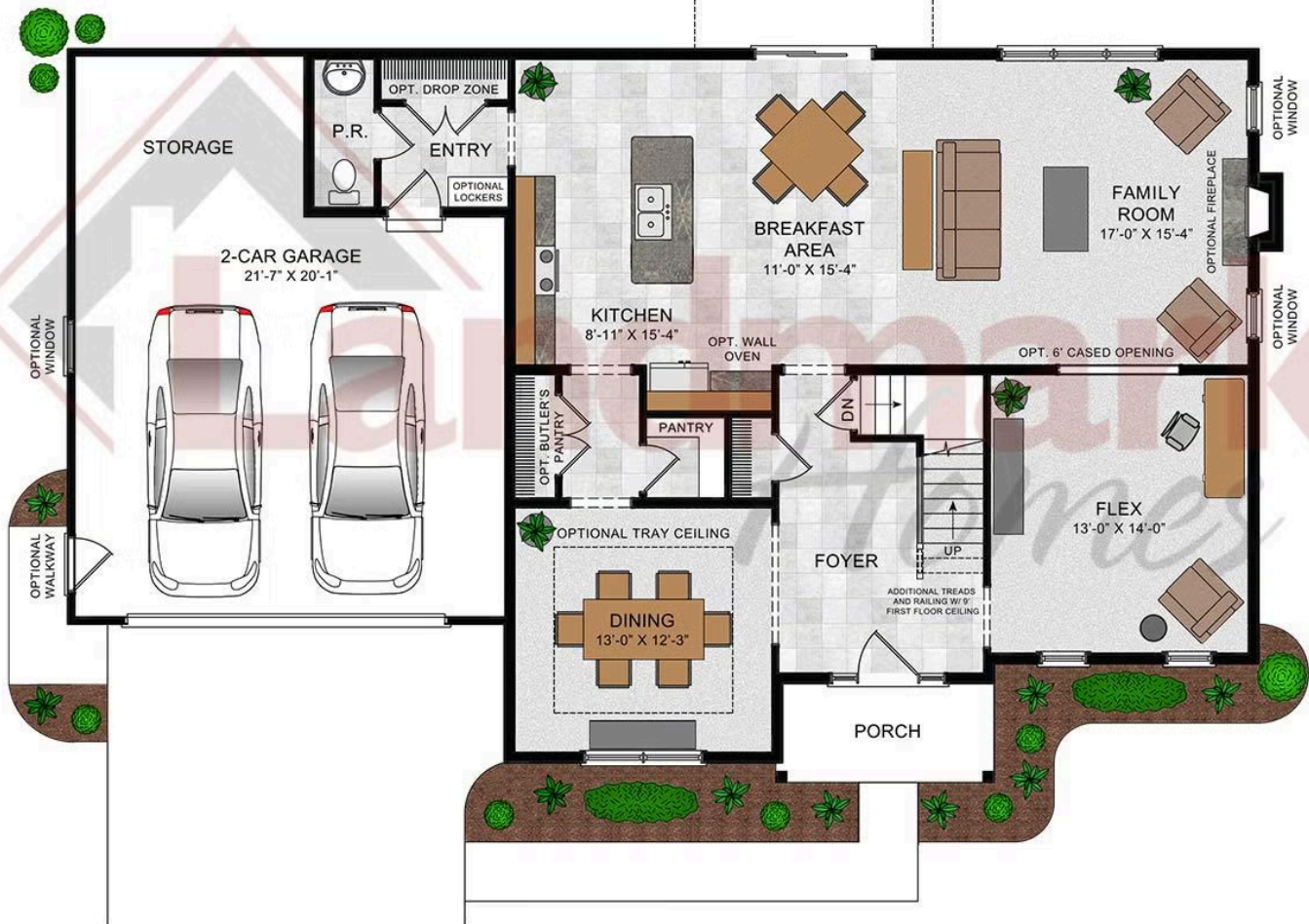


Upgraded A Traditional



FIRST FLOOR

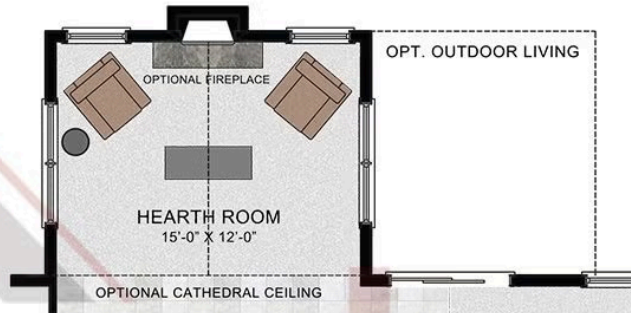
OPT. OUTDOOR LIVING



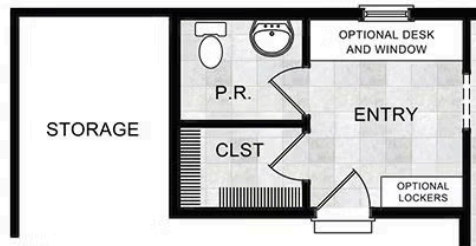
© 2023 Landmark Builders, Inc. We enforce our intellectual property rights to the fullest extent permitted by applicable law. Elevations and landscaping are artists' conceptions only. Floor plans may vary depending on elevation selected. Actual construction documents take precedence over artwork.

Wesley

OPTIONAL HEARTH ROOM



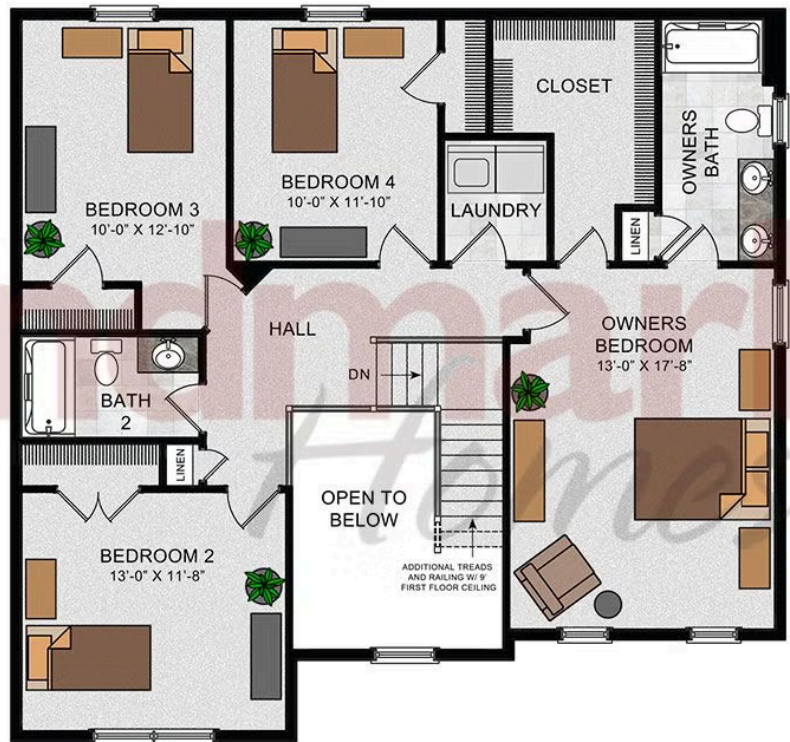
OPTIONAL EXPANDED ENTRY



© 2023 Landmark Builders, Inc. We enforce our intellectual property rights to the fullest extent permitted by applicable law. Elevations and landscaping are artists' conceptions only. Floor plans may vary depending on elevation selected. Actual construction documents take precedence over artwork.

Wesley

SECOND FLOOR



© 2023 Landmark Builders, Inc. We enforce our intellectual property rights to the fullest extent permitted by applicable law. Elevations and landscaping are artists' conceptions only. Floor plans may vary depending on elevation selected. Actual construction documents take precedence over artwork.



Single Family
Wesley
Mountain View Estates

COMMUNITY SALES MANAGER

Dontell Robinson
Call/Text 717-669-2196





Single Family
Wesley
Mountain View Estates

COMMUNITY SALES MANAGER

Dontell Robinson
Call/Text 717-669-2196

