



Single Family
Kingston
Mountain View Estates

COMMUNITY SALES MANAGER

Dontell Robinson

Call/Text 717-669-2196



Priced From
\$561,100

4 Elevations Available

4 Bedrooms

2.5 Bathrooms

3,024+ Sq. Ft.

2 Car Garage

This two-story home with over 3,000 sq. feet includes a 2-car garage with mudroom entry. To the front of the home is a versatile living room and a formal dining room with an optional tray ceiling. A 2-story great room with optional gas fireplace opens to the breakfast area and kitchen. The laundry room is on the 2nd floor convenient to the bedrooms. The owner's suite with an expansive closet and private bathroom can be upgraded. An optional recreation room can be added to the 2nd floor for additional living space. A grand, 2-story foyer option can also be added to the home.

Available Elevations



Upgraded Transitional B



Upgraded Traditional A



Upgraded Trademark C



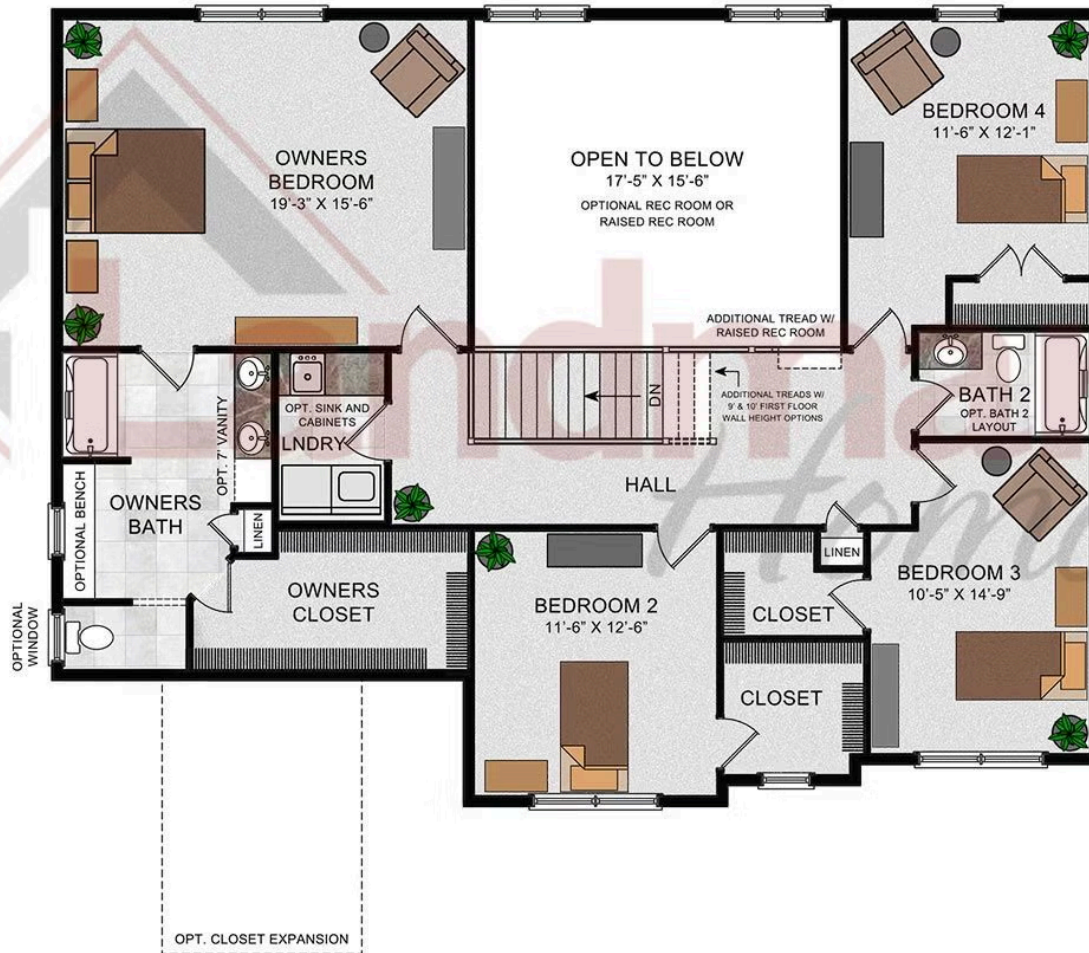
Upgraded Contemporary Elevation





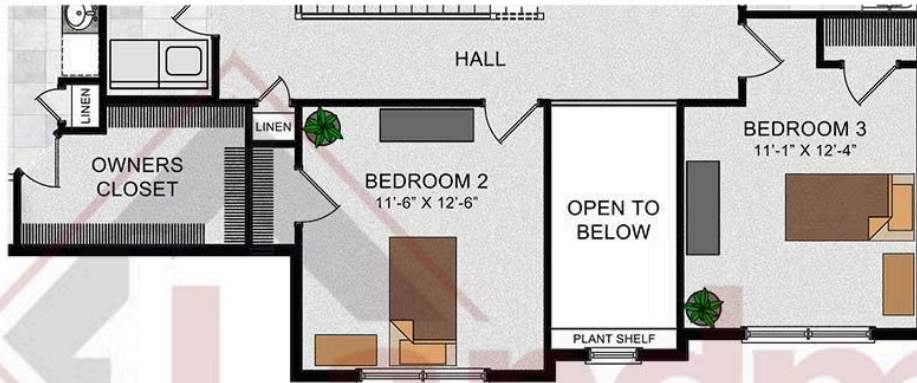
© 2023 Landmark Builders, Inc. We enforce our intellectual property rights to the fullest extent permitted by applicable law. Elevations and landscaping are artists' conceptions only. Floor plans may vary depending on elevation selected. Actual construction documents take precedence over artwork.

SECOND FLOOR

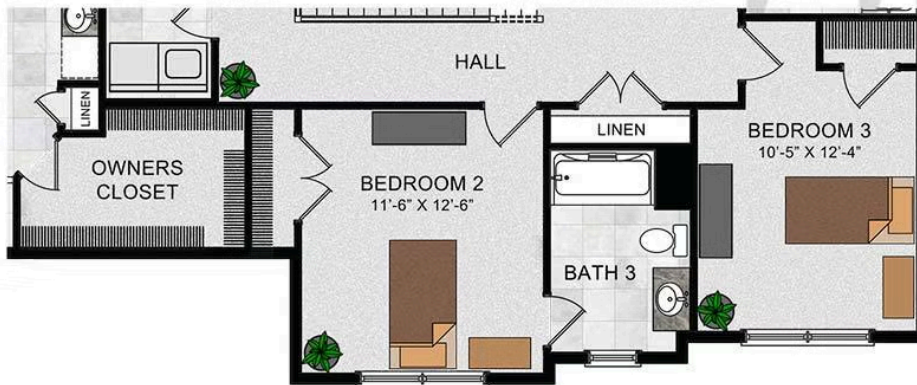


© 2022 Landmark Builders, Inc. We enforce our intellectual property rights to the fullest extent permitted by applicable law. Elevations and landscaping are artists' conceptions only. Floor plans may vary depending on elevation selected. Actual construction documents take precedence over artwork.

OPTIONAL OPEN FOYER



OPTIONAL BEDROOM 2 FULL BATH



OPTIONAL FIRST
 FLOOR GUEST SUITE



© 2022 Landmark Builders, Inc. We enforce our intellectual property rights to the fullest extent permitted by applicable law. Elevations and landscaping are artists' conceptions only. Floor plans may vary depending on elevation selected. Actual construction documents take precedence over artwork.