



Single Family
Huntington
Mountain View Estates

COMMUNITY SALES MANAGER

Dontell Robinson

Call/Text 717-669-2196



Priced From
\$495,800

3 Elevations Available

4 Bedrooms

2.5 Bathrooms

2,198+ Sq. Ft.

2 Car Garage

A gorgeous, well-planned family home offering three roomy bedrooms and an owner's suite with a private bath, double bowl vanity, and spacious closet. A flex space room and dining room flank the foyer upon entering this stately home. The large family room with optional fireplace flows comfortably into the sunlit breakfast area. The open kitchen has an optional center island for even more working space. (Pricing may reflect limited-time savings/incentives. See Community Sales Manager for details.) Ask about our new Design Made Easy program for the Huntington plan, which allows you to move in faster, enjoy stress-free selections, and personalize your space with expertly curated design packages. Only available in select communities and plans.

Available Elevations



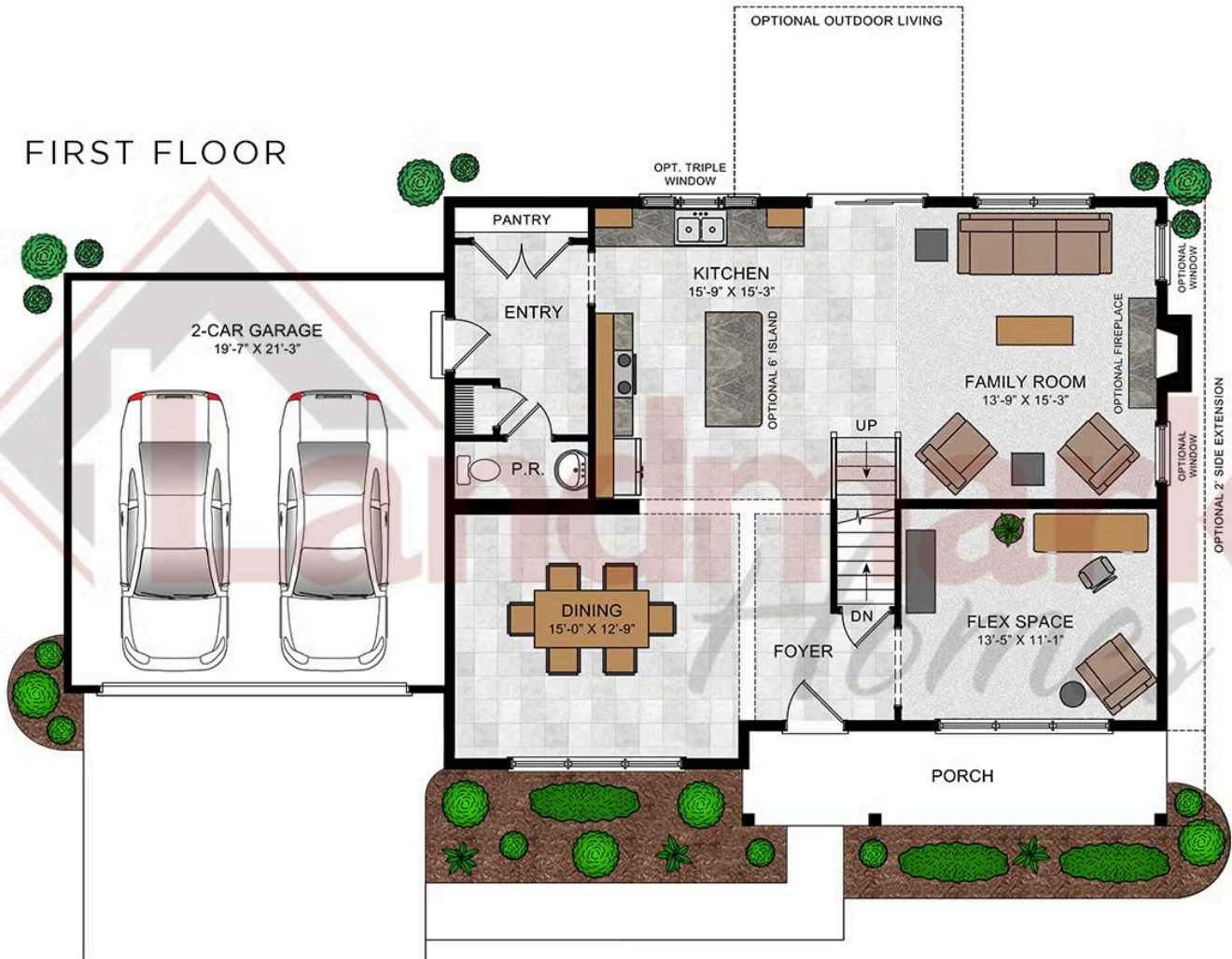
Upgraded Traditional A



Upgraded Transitional B



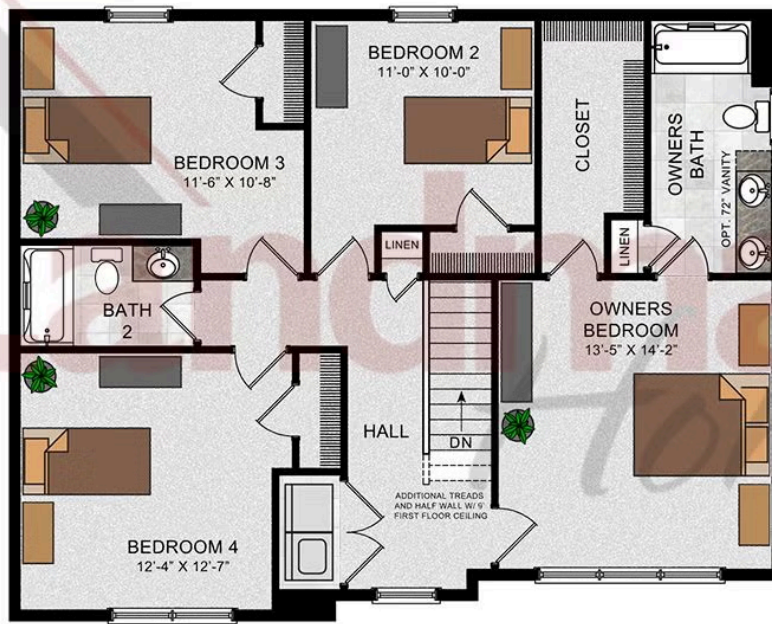
FIRST FLOOR



© 2022 Landmark Builders, Inc. We enforce our intellectual property rights to the fullest extent permitted by applicable law. Elevations and landscaping are artists' conceptions only. Floor plans may vary depending on elevation selected. Actual construction documents take precedence over artwork.

Huntington

SECOND FLOOR

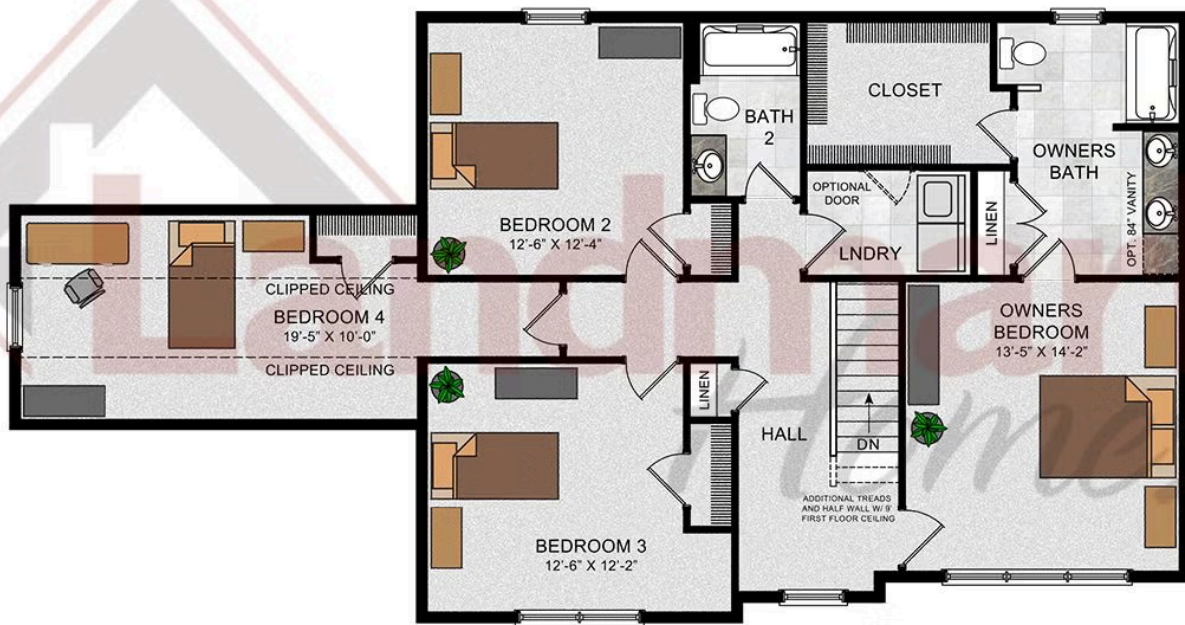


© 2022 Landmark Builders, Inc. We enforce our intellectual property rights to the fullest extent permitted by applicable law. Elevations and landscaping are artists' conceptions only. Floor plans may vary depending on elevation selected. Actual construction documents take precedence over artwork.



Huntington

OPTIONAL SECOND FLOOR



© 2022 Landmark Builders, Inc. We enforce our intellectual property rights to the fullest extent permitted by applicable law. Elevations and landscaping are artists' conceptions only. Floor plans may vary depending on elevation selected. Actual construction documents take precedence over artwork.

