



Single Family
Bridgemont
Mountain View Estates

COMMUNITY SALES MANAGER

Dontell Robinson

Call/Text 717-669-2196



Priced From
\$532,000

3 Elevations Available

3 Bedrooms

2.5 Bathrooms

2,711+ Sq. Ft.

2 Car Garage

One story living at its best and over 2,700 sq feet! The expansive owner's suite features a spacious closet and convenient laundry. The open kitchen has an optional shared cathedral ceiling with the great room. A dining room and breakfast area provide ample seating for entertaining. A private study off the mudroom can provide various uses to suit your needs.

Available Elevations



Upgraded C Trademark



Upgraded A Traditional



Upgraded B Transitional

Document generated 4/24/26

© 2026 Landmark Builders, Inc. We enforce our intellectual property rights to the fullest extent permitted by applicable law. Elevations and landscaping are artists' conceptions only. Actual construction documents take precedence over artwork. Similar photos shown are for representative purposes only. Details subject to

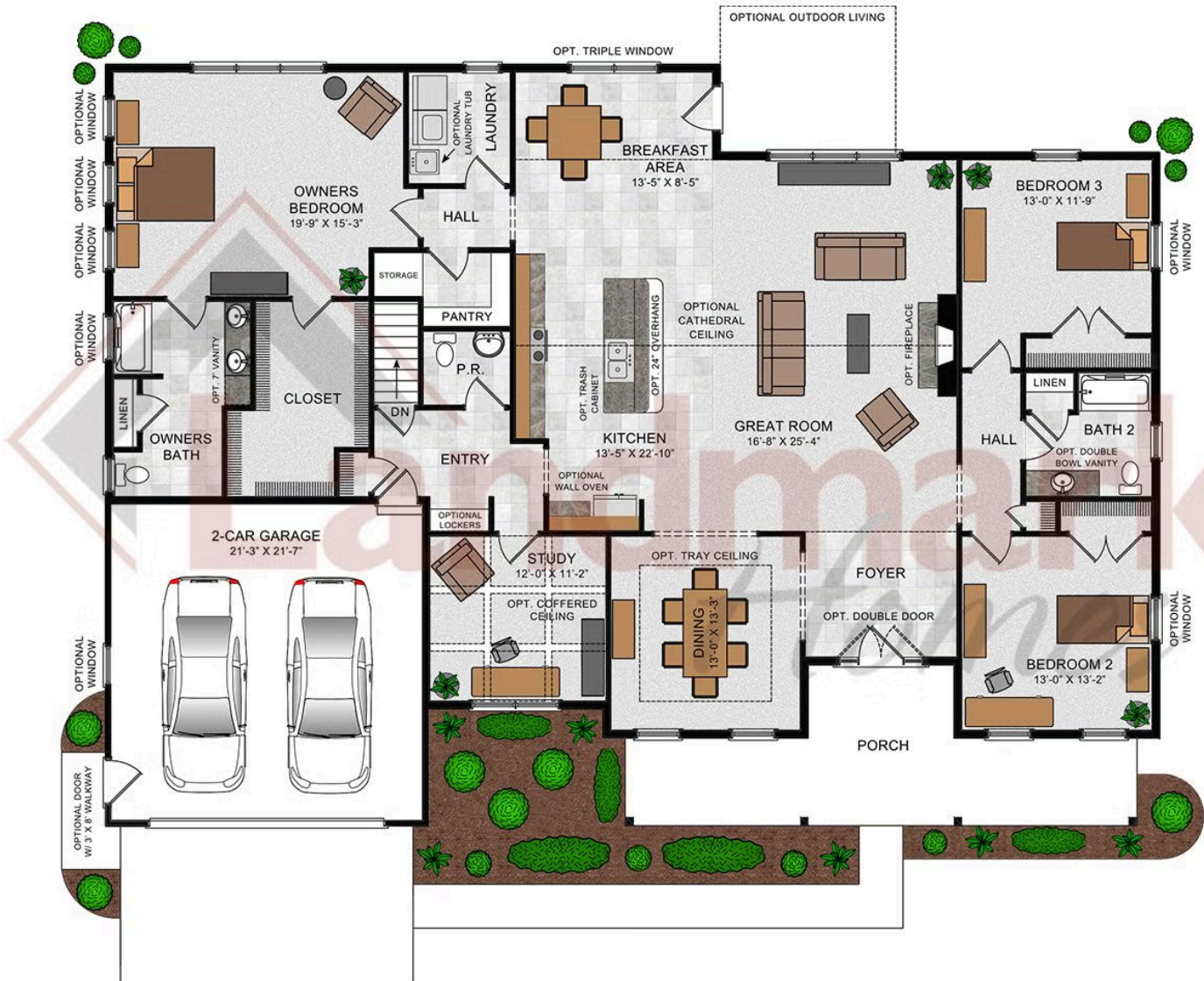




Single Family
Bridgemont
 Mountain View Estates

COMMUNITY SALES MANAGER
 Dontell Robinson
 Call/Text 717-669-2196

Bridgemont



© 2022 Landmark Builders, Inc. We enforce our intellectual property rights to the fullest extent permitted by applicable law. Elevations and landscaping are artists' conceptions only. Floor plans may vary depending on elevation selected. Actual construction documents take precedence over artwork.

© 2026 Landmark Builders, Inc. We enforce our intellectual property rights to the fullest extent permitted by applicable law. Elevations and landscaping are artists' conceptions only. Actual construction documents take precedence over artwork. Similar photos shown are for representative purposes only. Details subject to change without notification. See Community Sales Manager for details.

Document generated 4/24/26

