



Single Family
Northfield

Winding Creek 55+ Living

COMMUNITY SALES MANAGER

Nicole Wamsher

Call/Text 717-690-5746



Priced From
\$497,800

4 Elevations Available

2 Bedrooms

2 Bathrooms

1,839+ Sq. Ft.

2 Car Garage

Ideal first-floor living with private owner's suite tucked away in its own corner of the home. With over 1,800 square feet, 2 bedrooms, and 2 full baths, plus open living areas, this is a perfect home for entertaining guests. The kitchen is open to a spacious family room and the sunny dining area. Off of the 2-car garage is a convenient mudroom entry.

Available Elevations



Upgraded Transitional B



Upgraded Traditional A



Upgraded Trademark C



Upgraded Contemporary Elevation

Document generated 4/19/26

© 2026 Landmark Builders, Inc. We enforce our intellectual property rights to the fullest extent permitted by applicable law. Elevations and landscaping are artists' conceptions only. Actual construction documents take precedence over artwork. Similar photos shown are for representative purposes only. Details subject to

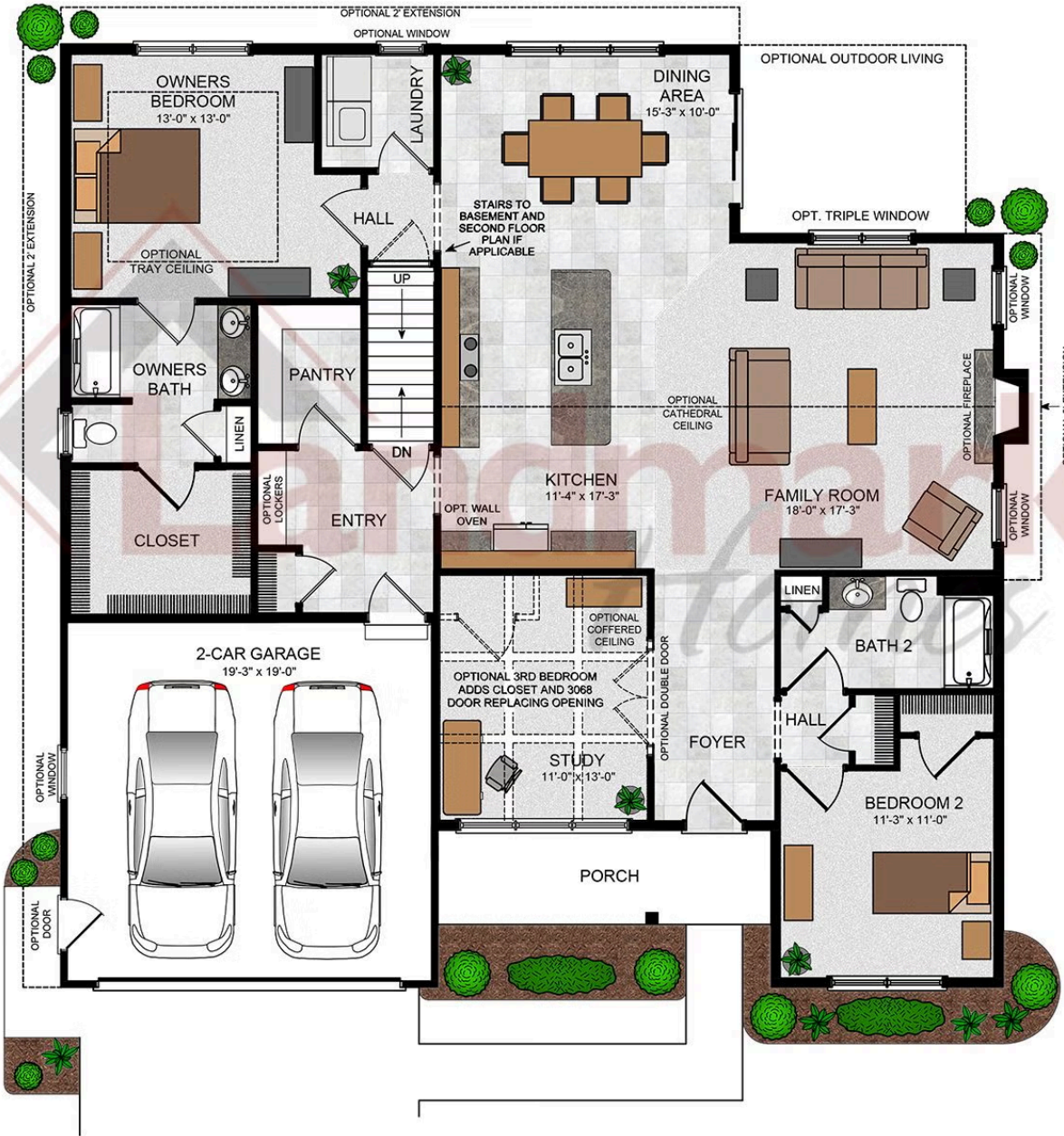




Single Family
Northfield
 Winding Creek 55+ Living

COMMUNITY SALES MANAGER
 Nicole Wamsher
 Call/Text 717-690-5746

Northfield



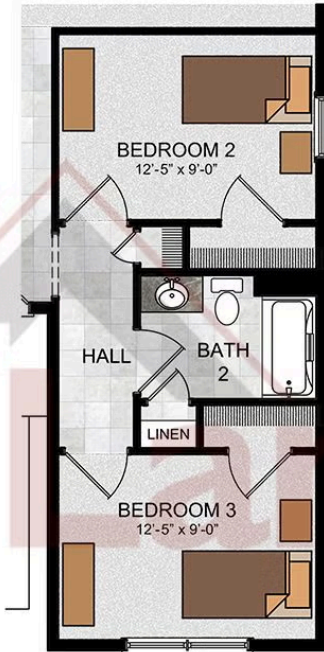
© 2022 Landmark Builders, Inc. We enforce our intellectual property rights to the fullest extent permitted by applicable law. Elevations and landscaping are artists' conceptions only. Floor plans may vary depending on elevation selected. Actual construction documents take precedence over artwork.

© 2026 Landmark Builders, Inc. We enforce our intellectual property rights to the fullest extent permitted by applicable law. Elevations and landscaping are artists' conceptions only. Actual construction documents take precedence over artwork. Similar photos shown are for representative purposes only. Details subject to change without notification. See Community Sales Manager for details.

Document generated 4/19/26



OPTIONAL FIRST FLOOR
 W/ BEDROOM 3



OPTIONAL SECOND
 FLOOR LOFT



OPTIONAL SECOND FLOOR PLAN W/
 3RD BEDROOM AND OPTIONAL LOFT
 OPEN TO FAMILY ROOM



© 2022 Landmark Builders, Inc. We enforce our intellectual property rights to the fullest extent permitted by applicable law. Elevations and landscaping are artists' conceptions only. Floor plans may vary depending on elevation selected. Actual construction documents take precedence over artwork.

© 2026 Landmark Builders, Inc. We enforce our intellectual property rights to the fullest extent permitted by applicable law. Elevations and landscaping are artists' conceptions only. Actual construction documents take precedence over artwork. Similar photos shown are for representative purposes only. Details subject to change without notification. See Community Sales Manager for details.