



Duplex
505 Stone Gate Boulevard
Annville, PA 17003

COMMUNITY SALES MANAGER

Nicole Wamsher

Call/Text 717-690-5746

MOVE-IN READY



Home Priced at
\$462,500

Plan: Chelsea Duplex

2 Bedrooms

2.0 Bathrooms

1,728 Sq. Ft.

Landmark's new duplex at Winding Creek 55+ is a thoughtfully designed 1-story home with 2 bedrooms, 2 full baths and a 2-car garage. The private side entry opens to the foyer and a formal dining room with a cathedral ceiling. The kitchen is well-equipped with stainless steel appliances, quartz countertops, a tile backsplash, and a large pantry. The great room, accented by a tray ceiling, is warmed by a gas fireplace with a stone surround. Both bedrooms are tucked quietly to the back of the home. The owner's suite has an oversized closet and a private bathroom with a tile shower.

Document generated 2/22/26



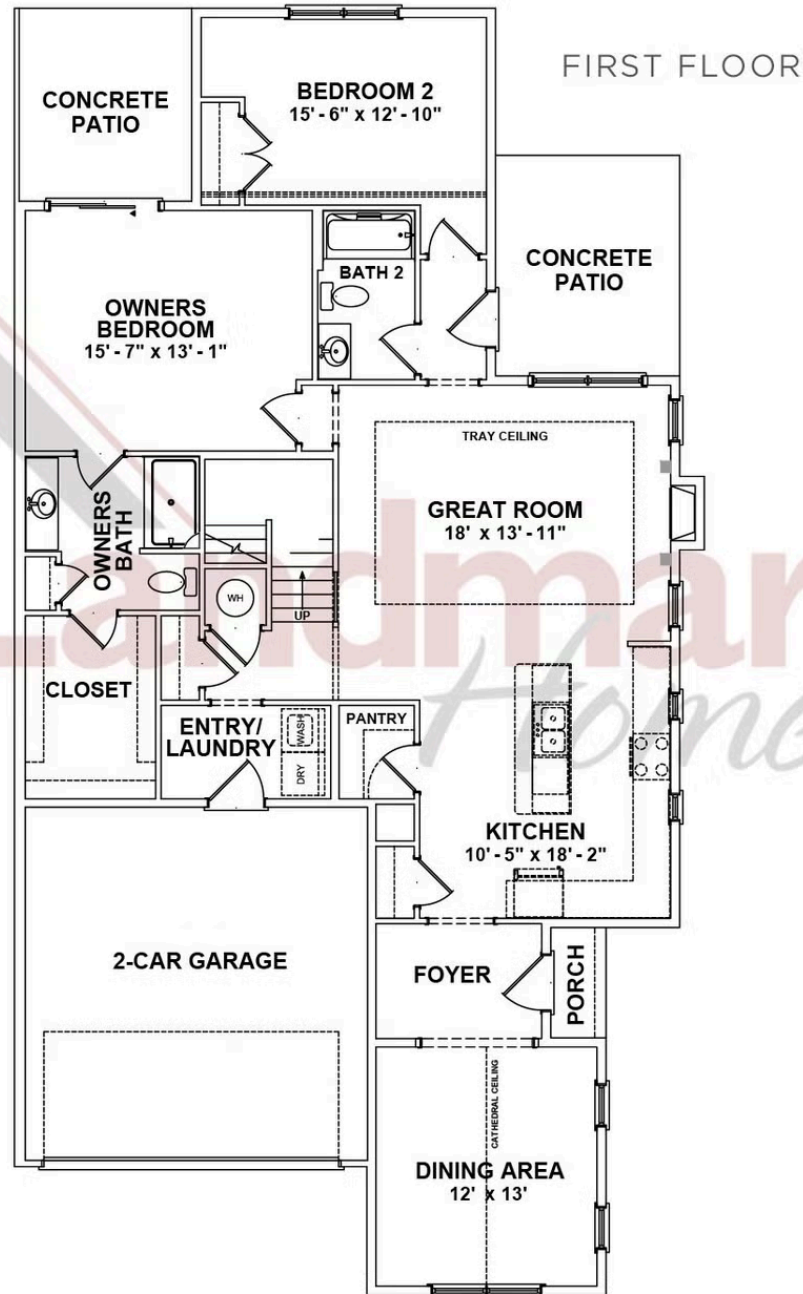


Duplex
505 Stone Gate Boulevard
Annville, PA 17003

COMMUNITY SALES MANAGER

Nicole Wamsher

Call/Text 717-690-5746



© 2024 Landmark Builders, Inc. We enforce our intellectual property rights to the fullest extent permitted by applicable law. Elevations and landscaping are artists' conceptions only. Floor plans may vary depending on elevation selected. Actual construction documents take precedence over artwork.





Duplex

505 Stone Gate Boulevard

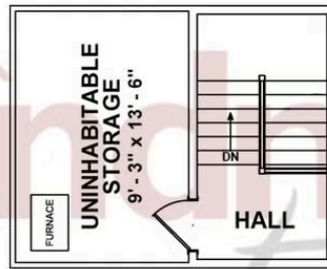
Annville, PA 17003

COMMUNITY SALES MANAGER

Nicole Wamsher

Call/Text 717-690-5746

SECOND FLOOR



© 2024 Landmark Builders, Inc. We enforce our intellectual property rights to the fullest extent permitted by applicable law. Elevations and landscaping are artists' conceptions only. Floor plans may vary depending on elevation selected. Actual construction documents take precedence over artwork.

