



Duplex  
**Chelsea Duplex**  
Winding Creek 55+ Living

**COMMUNITY SALES MANAGER**

Nicole Wamsher  
Call/Text 717-690-5746



Priced From  
**\$424,500**

1 Elevation Available

2 Bedrooms

2 Bathrooms

1,728+ Sq. Ft.

2 Car Garage

Landmark's new duplex at Winding Creek 55+ is a thoughtfully designed 1-story home with 2 bedrooms, 2 full baths, a 2-car garage, and a storage space on the second floor. The side entry opens to the foyer and a formal dining room. The kitchen is adjacent to the great room to create an open plan. Both bedrooms are tucked quietly to the back of the home. The owner's suite has an oversized closet and private bathroom. 9' ceilings throughout the home. An optional second floor layout adds a third bedroom. (Pricing may reflect limited time savings/incentives. See Community Sales Manager for details.)

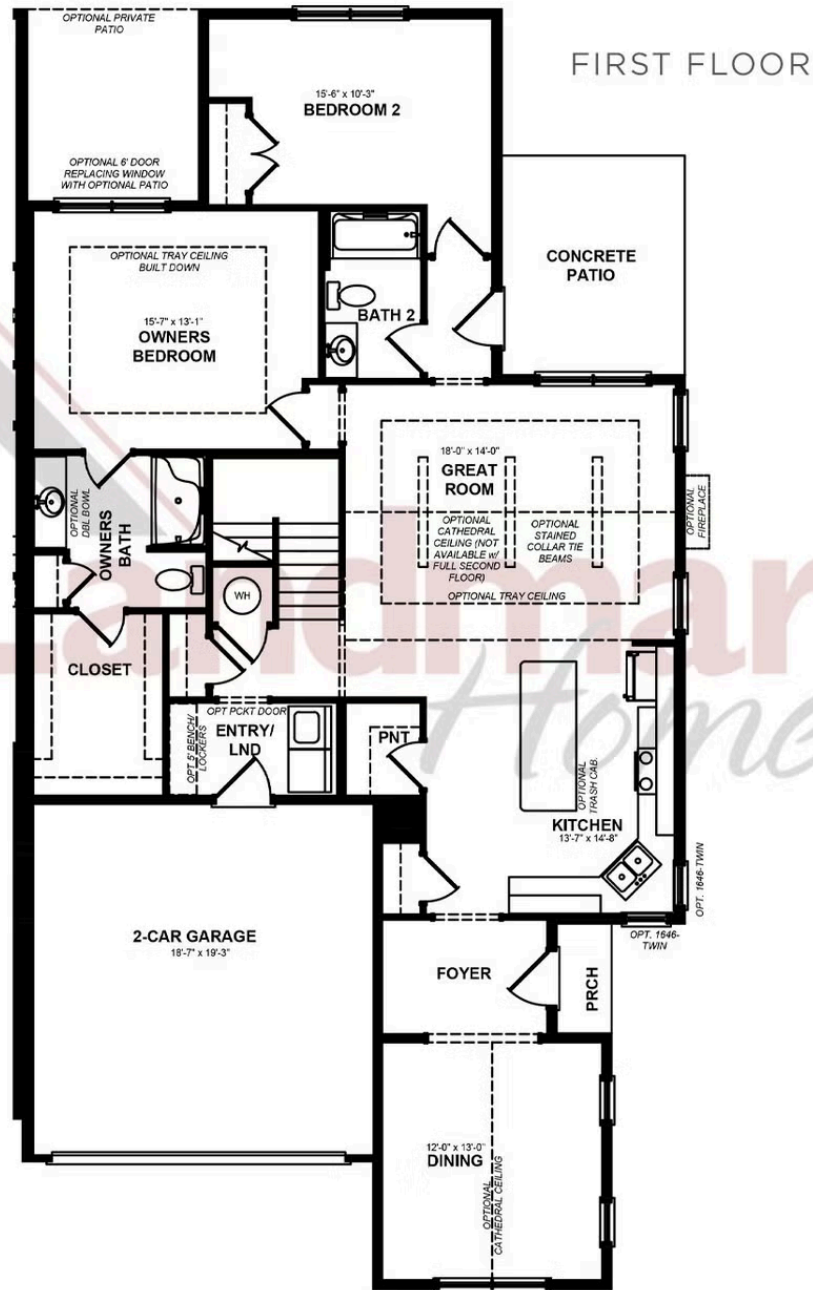
### Available Elevations



Document generated 4/24/26

© 2026 Landmark Builders, Inc. We enforce our intellectual property rights to the fullest extent permitted by applicable law. Elevations and landscaping are artists' conceptions only. Actual construction documents take precedence over artwork. Similar photos shown are for representative purposes only. Details subject to





© 2024 Landmark Builders, Inc. We enforce our intellectual property rights to the fullest extent permitted by applicable law. Elevations and landscaping are artists' conceptions only. Floor plans may vary depending on elevation selected. Actual construction documents take precedence over artwork.

© 2026 Landmark Builders, Inc. We enforce our intellectual property rights to the fullest extent permitted by applicable law. Elevations and landscaping are artists' conceptions only. Actual construction documents take precedence over artwork. Similar photos shown are for representative purposes only. Details subject to change without notification. See Community Sales Manager for details.

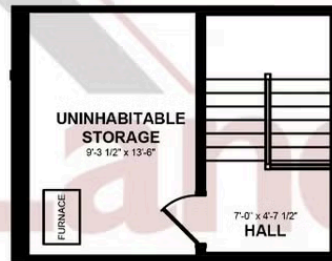


Duplex  
**Chelsea Duplex**  
Winding Creek 55+ Living

**COMMUNITY SALES MANAGER**

Nicole Wamsher  
Call/Text 717-690-5746

SECOND FLOOR



© 2024 Landmark Builders, Inc. We enforce our intellectual property rights to the fullest extent permitted by applicable law. Elevations and landscaping are artists' conceptions only. Floor plans may vary depending on elevation selected. Actual construction documents take precedence over artwork.

© 2026 Landmark Builders, Inc. We enforce our intellectual property rights to the fullest extent permitted by applicable law. Elevations and landscaping are artists' conceptions only. Actual construction documents take precedence over artwork. Similar photos shown are for representative purposes only. Details subject to change without notification. See Community Sales Manager for details.

Document generated 4/24/26



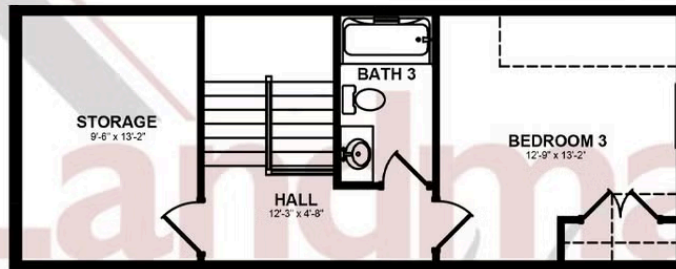


Duplex  
**Chelsea Duplex**  
Winding Creek 55+ Living

**COMMUNITY SALES MANAGER**

Nicole Wamsher  
Call/Text 717-690-5746

OPTIONAL SECOND FLOOR



© 2024 Landmark Builders, Inc. We enforce our intellectual property rights to the fullest extent permitted by applicable law. Elevations and landscaping are artists' conceptions only. Floor plans may vary depending on elevation selected. Actual construction documents take precedence over artwork.

© 2026 Landmark Builders, Inc. We enforce our intellectual property rights to the fullest extent permitted by applicable law. Elevations and landscaping are artists' conceptions only. Actual construction documents take precedence over artwork. Similar photos shown are for representative purposes only. Details subject to change without notification. See Community Sales Manager for details.

Document generated 4/24/26

