



Duplex

516 Stone Gate Boulevard

Anncville, PA 17003

COMMUNITY SALES MANAGER

Nicole Wamsher

Call/Text 717-690-5746

MOVE-IN READY



Home Priced at
\$505,800

Plan: Bella Duplex

2 Bedrooms

2.0 Bathrooms

1,714 Sq. Ft.

This lovely new duplex at Winding Creek 55+ is a thoughtfully designed 1-story home with 2 bedrooms, 2 full baths, and a 2-car garage with a mudroom entry. The front entry opens to the foyer, secondary bedroom and bathroom, perfect for guests. Stylish vinyl plank flooring flows throughout the main living areas. The kitchen, well-appointed with quartz countertops, a tile backsplash, stainless steel appliances and a large pantry, is adjacent to the dining area and great room to create an open plan. The great room makes a grand impression with its cathedral ceiling, wood beam detail and a beautiful fireplace with a stone and shiplap surround. Sliding glass door access in the great room leads to a composite deck, perfect for outdoor relaxation. Tucked quietly to the back of the home, the owner's suite features an oversized closet and a private bathroom with a tile shower and double bowl vanity.

Document generated 2/6/26



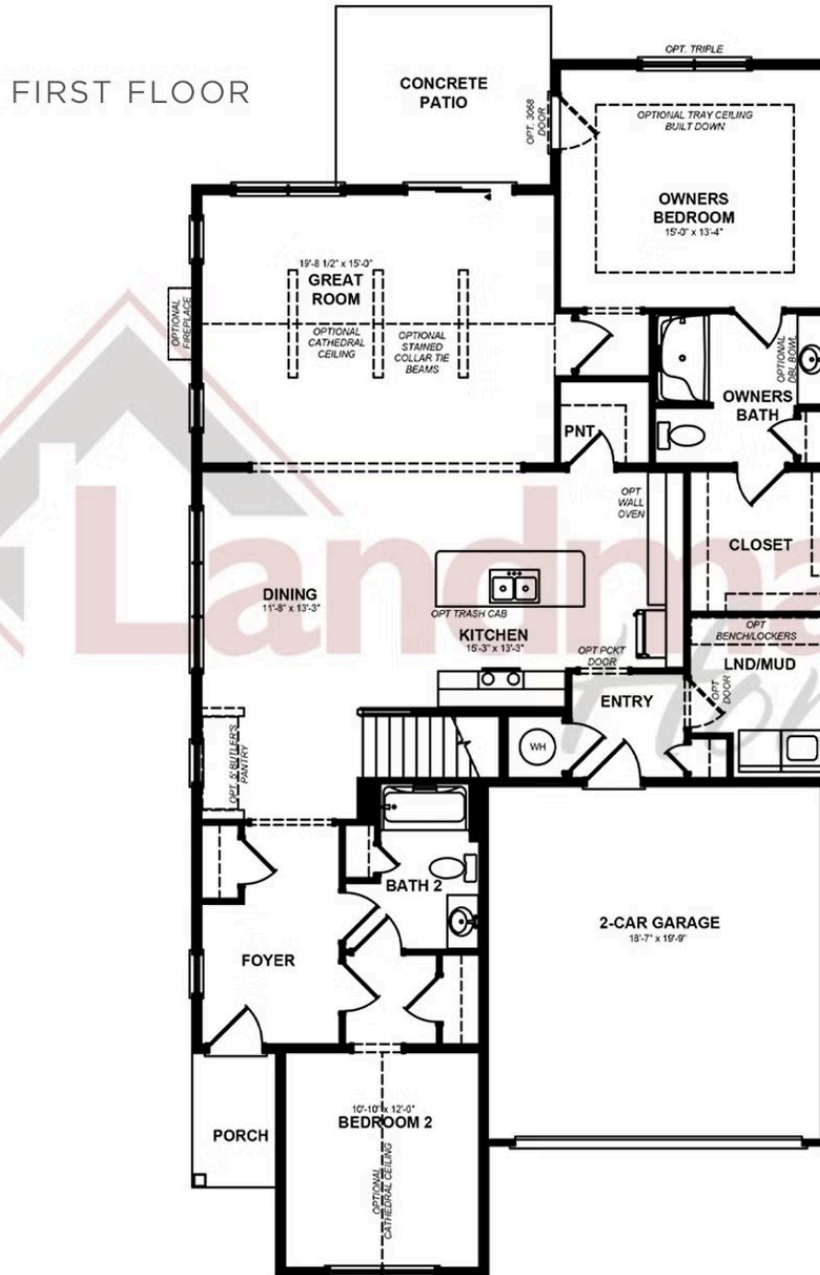


Duplex
516 Stone Gate Boulevard
Annville, PA 17003

COMMUNITY SALES MANAGER

Nicole Wamsher

Call/Text 717-690-5746



© 2024 Landmark Builders, Inc. We enforce our intellectual property rights to the fullest extent permitted by applicable law. Elevations and landscaping are artists' conceptions only. Floor plans may vary depending on elevation selected. Actual construction documents take precedence over artwork.





Duplex

516 Stone Gate Boulevard

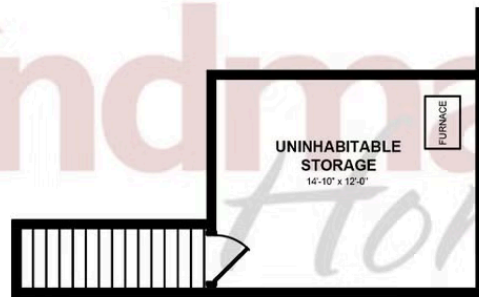
Annville, PA 17003

COMMUNITY SALES MANAGER

Nicole Wamsher

Call/Text 717-690-5746

SECOND FLOOR



© 2024 Landmark Builders, Inc. We enforce our intellectual property rights to the fullest extent permitted by applicable law. Elevations and landscaping are artists' conceptions only. Floor plans may vary depending on elevation selected. Actual construction documents take precedence over artwork.

