



Duplex  
**508 Stone Gate Blvd**  
Annnville, PA 17003

**COMMUNITY SALES MANAGER**

Nicole Wamsher  
Call/Text 717-690-5746

**MOVE-IN READY**



Home Priced at  
**\$515,500**

Plan: Bella Duplex

2 Bedrooms

2.0 Bathrooms

1,714 Sq. Ft.

This lovely new duplex at Winding Creek 55+ is a thoughtfully designed 1-story home with 2 bedrooms, 2 full baths, and a 2-car garage with a mudroom entry. The front entry opens to the foyer, secondary bedroom and bathroom, perfect for guests. Stylish vinyl plank flooring flows throughout the main living areas. The kitchen, well-appointed with quartz countertops, a tile backsplash, stainless steel appliances and a large pantry, is adjacent to the dining area and great room to create an open plan. The great room makes a grand impression with its cathedral ceiling and a beautiful fireplace with floor-to-ceiling stone. Sliding glass door access in the great room leads to a composite deck. Tucked quietly to the back of the home, the owner's suite features an oversized closet and a private bathroom with a tile shower and double bowl vanity.

Document generated 2/6/26



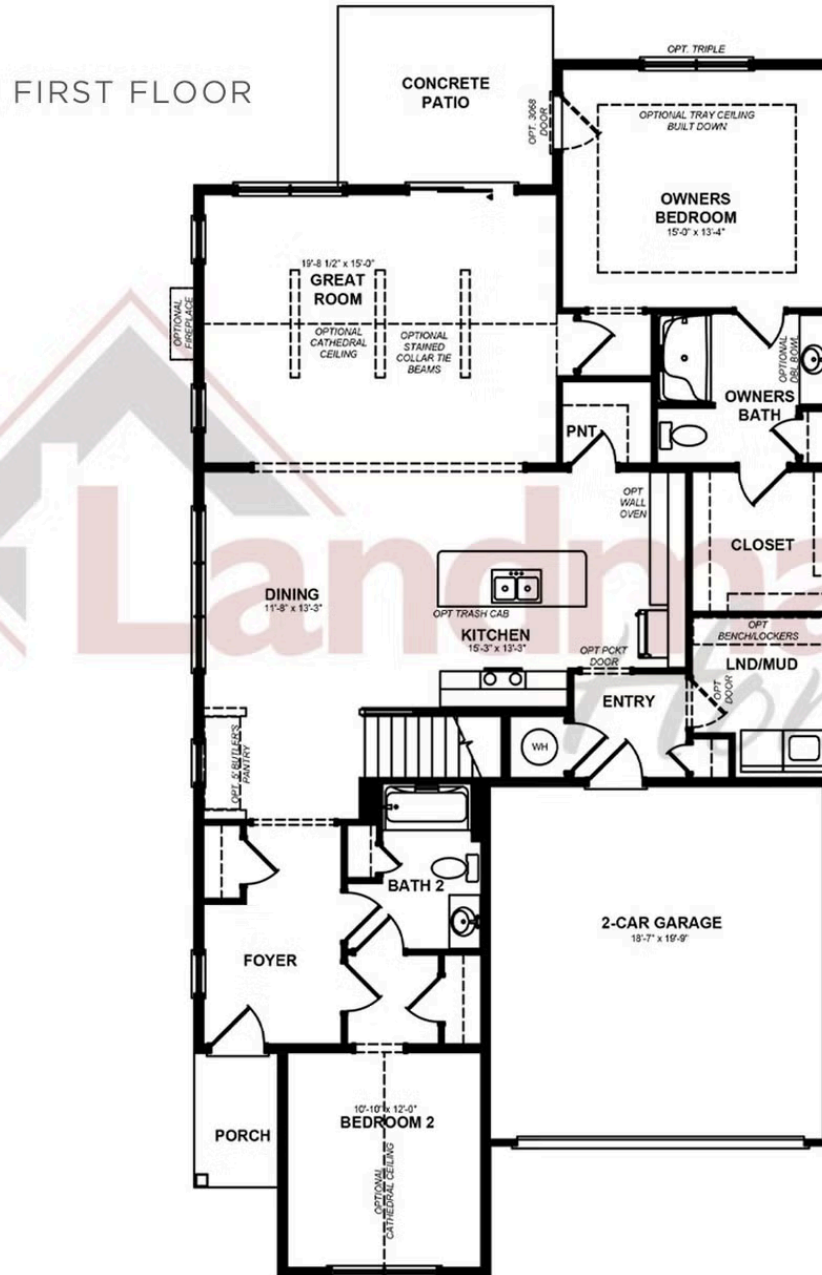


Duplex  
**508 Stone Gate Blvd**  
Annville, PA 17003

COMMUNITY SALES MANAGER

Nicole Wamsher

Call/Text 717-690-5746



© 2024 Landmark Builders, Inc. We enforce our intellectual property rights to the fullest extent permitted by applicable law. Elevations and landscaping are artists' conceptions only. Floor plans may vary depending on elevation selected. Actual construction documents take precedence over artwork.



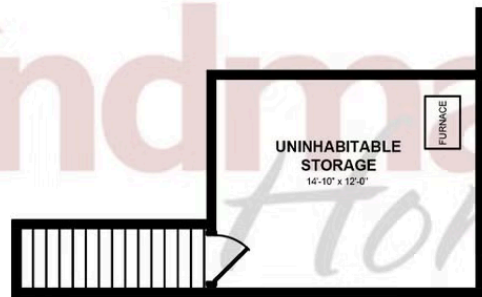


Duplex  
**508 Stone Gate Blvd**  
Annville, PA 17003

**COMMUNITY SALES MANAGER**

Nicole Wamsher  
Call/Text 717-690-5746

## SECOND FLOOR



© 2024 Landmark Builders, Inc. We enforce our intellectual property rights to the fullest extent permitted by applicable law. Elevations and landscaping are artists' conceptions only. Floor plans may vary depending on elevation selected. Actual construction documents take precedence over artwork.

Document generated 2/6/26

