



Single Family

528 Winding Creek Boulevard

Annville, PA 17003

COMMUNITY SALES MANAGER

Nicole Wamsher

Call/Text 717-690-5746

UNDER CONSTRUCTION



Home Priced at

\$653,900

Plan: Atworth

Elevation: Atworth Exterior

3 Bedrooms

2.5 Bathrooms

2,614 Sq. Ft.

UNDER CONSTRUCTION - AVAILABLE THIS SUMMER: This charming 2-story home with first floor living and a welcoming front porch includes a 2-car garage and 9' ceilings on the first floor. The garage opens to a mudroom with built-in lockers and the laundry room. Beautiful vinyl plank flooring flows throughout the main living areas. The open kitchen is well-appointed with enhanced appliances and cabinetry, quartz countertops with tile backsplash, and a large center island and pantry. The kitchen opens to the dining area and comfortable living room, warmed by a gas fireplace with stone surround. From here, step out onto the rear covered patio, offering the perfect space for outdoor relaxation or summer barbecues. Follow the hall from the main area to the owner's suite that includes an expansive closet and private bathroom with double bowl vanity and tile shower. Just off the front entrance, a versatile flex room offers the ideal space for a home office, reading room, or creative retreat. Upstairs, discover a thoughtfully designed layout featuring a spacious loft, two generously sized secondary bedrooms and a stylish hall bath.

Document generated 2/17/26





Single Family

528 Winding Creek Boulevard

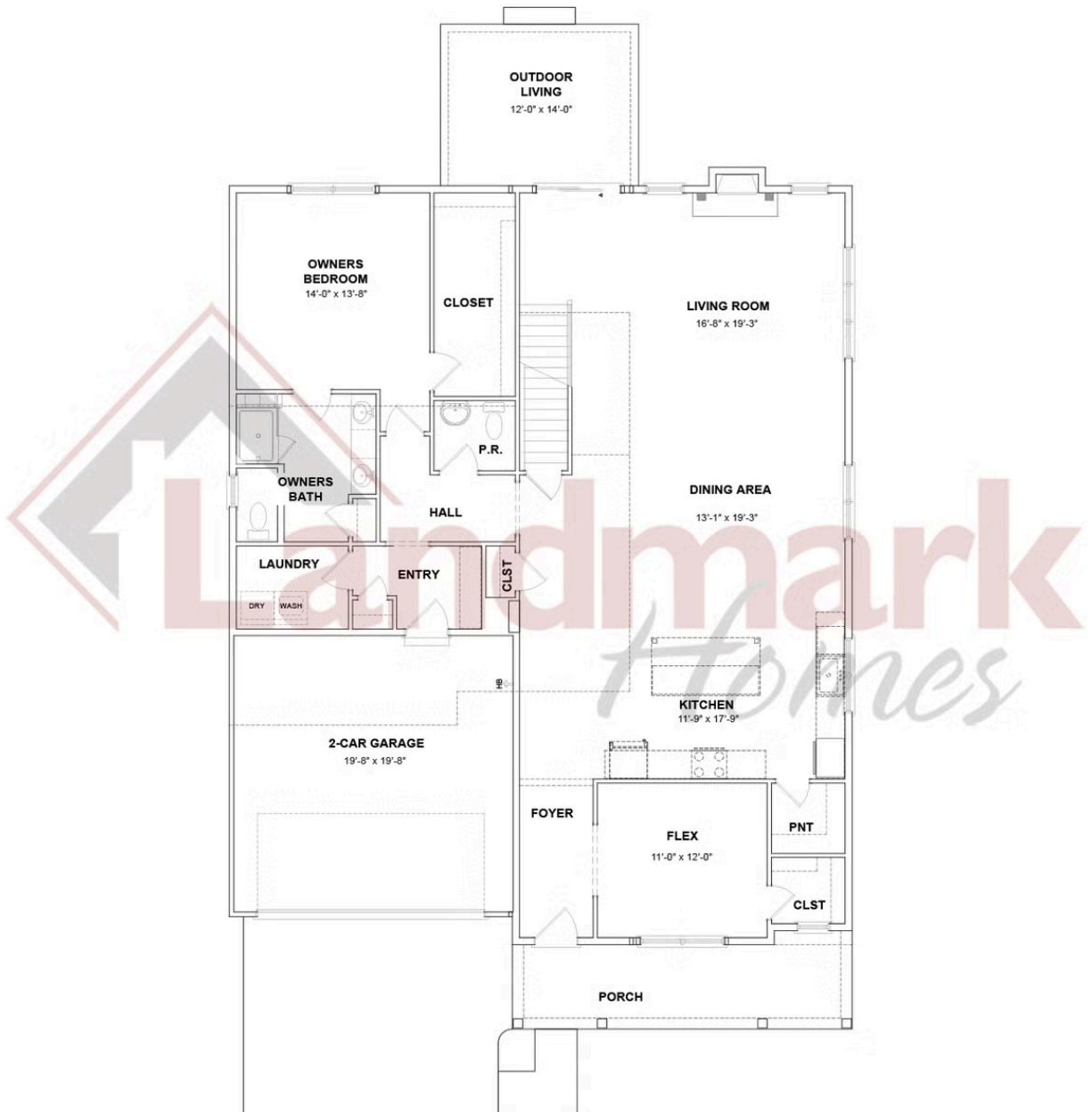
Annville, PA 17003

COMMUNITY SALES MANAGER

Nicole Wamsher

Call/Text 717-690-5746

FIRST FLOOR



© 2026 Landmark Builders, Inc. We enforce our intellectual property rights to the fullest extent permitted by applicable law. Elevations and landscaping are artists' conceptions only. Floor plans may vary depending on elevation selected. Actual construction documents take precedence over artwork.





Single Family

528 Winding Creek Boulevard

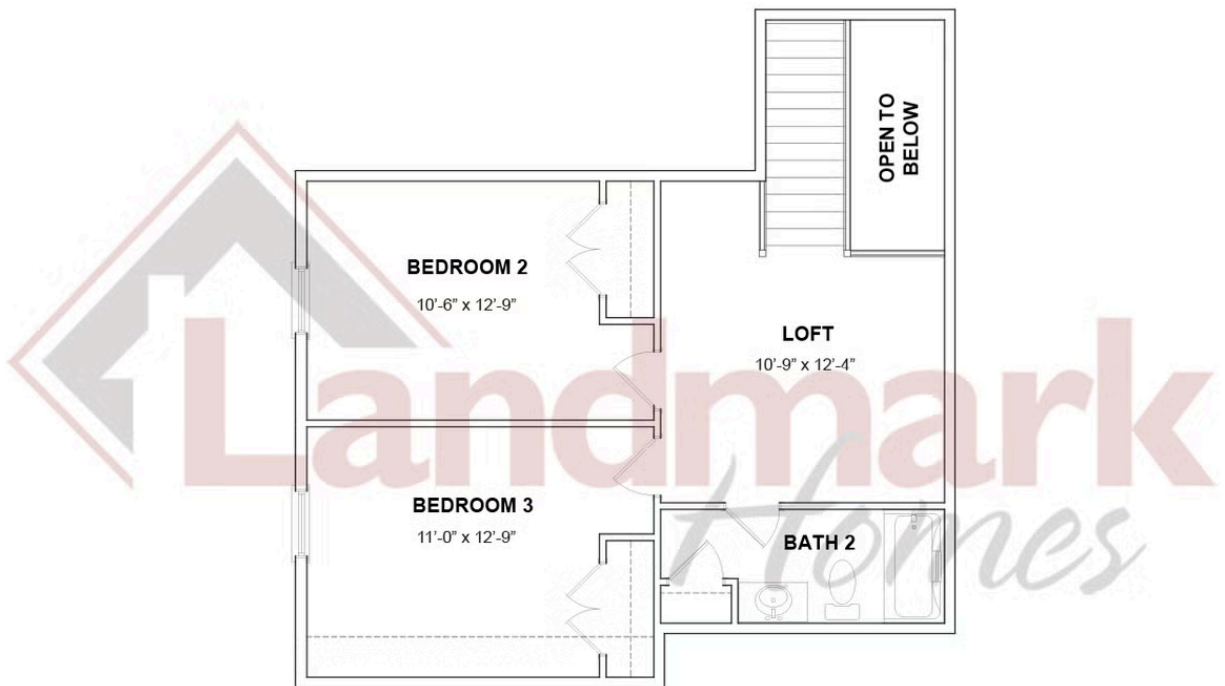
Annville, PA 17003

COMMUNITY SALES MANAGER

Nicole Wamsher

Call/Text 717-690-5746

SECOND FLOOR



© 2026 Landmark Builders, Inc. We enforce our intellectual property rights to the fullest extent permitted by applicable law. Elevations and landscaping are artists' conceptions only. Floor plans may vary depending on elevation selected. Actual construction documents take precedence over artwork.

Document generated 2/17/26

