



Single Family

**102 Grand Summit Drive**

Annvile, PA 17003

**COMMUNITY SALES MANAGER**

Nicole Wamsher

Call/Text 717-690-5746

**MODEL HOME**



## Call for Price

Plan: Ashton

3 Bedrooms

3.0 Bathrooms

2,609 Sq. Ft.

[Exclusively furnished by Interiors Home! Join the Curated Comfort Event on Saturday, February 7th from noon-2pm.](#)

\*This is a model home not listed for sale\* This charming 1.5-story home with welcoming front porch and designer details includes a 2-car garage and 10' ceilings on the first floor. The garage opens to a mudroom entry with built-in lockers and access to the laundry room. Beautiful hardwood flooring flows throughout the main living areas. The open kitchen and great room share a cathedral ceiling with stained wood beams. The kitchen is well-appointed with upgraded appliances, quartz countertops with tile backsplash, and a large center island. The great room is warmed by a cozy gas fireplace with shiplap and stone surround with box beam mantel. A sunny dining area has sliding glass door access to a screened in porch. To the rear of the home, the owner's bedroom with tray ceiling detail features an expansive closet and a private bathroom with two vanities and a tile shower. A second bedroom, full bathroom and flex room are found to the front of the home. On the 2nd floor, a third bedroom, full bathroom and loft space are perfect for hosting family and friends.





Single Family

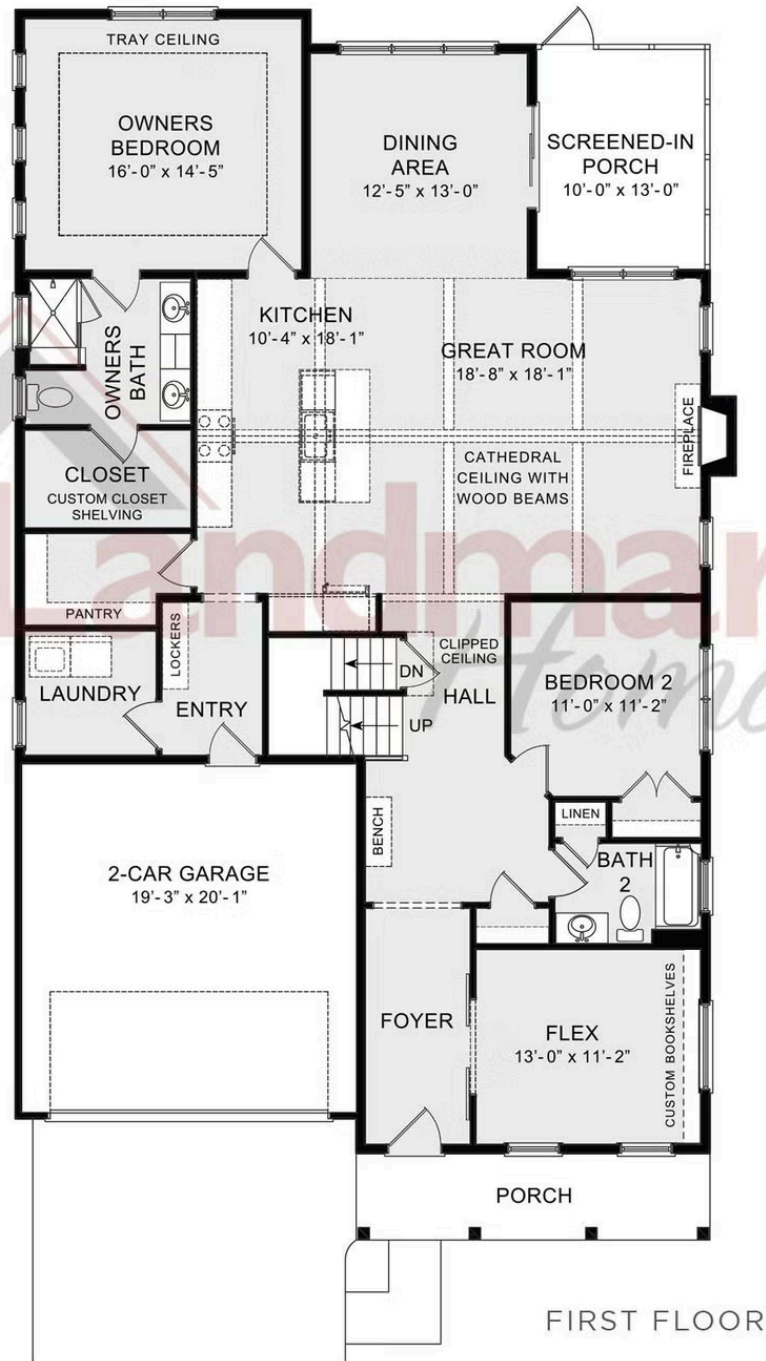
# 102 Grand Summit Drive

Annville, PA 17003

COMMUNITY SALES MANAGER

Nicole Wamsher

Call/Text 717-690-5746



© 2022 Landmark Builders, Inc. We enforce our intellectual property rights to the fullest extent permitted by applicable law. Elevations and landscaping are artists' conceptions only. Floor plans may vary depending on elevation selected. Actual construction documents take precedence over artwork.





Single Family

**102 Grand Summit Drive**

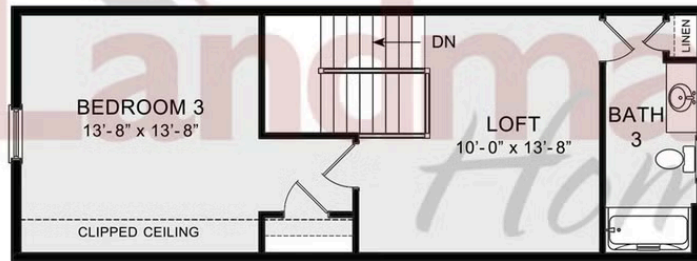
Annville, PA 17003

**COMMUNITY SALES MANAGER**

Nicole Wamsher

Call/Text 717-690-5746

SECOND FLOOR



© 2022 Landmark Builders, Inc. We enforce our intellectual property rights to the fullest extent permitted by applicable law. Elevations and landscaping are artists' conceptions only. Floor plans may vary depending on elevation selected. Actual construction documents take precedence over artwork.

