



Single Family

## 509 Sunset Boulevard

Annville, PA 17003

COMMUNITY SALES MANAGER

Jilian Treadway

Call/Text 717-799-6695

**SALE PENDING**



**SALE PENDING**

Plan: Riley

4 Bedrooms

2.5 Bathrooms

2,447 Sq. Ft.

\*SALE PENDING\* -- This brand new 2-story plan includes a wide front porch, 9' ceilings on the first floor and a 2-car garage. Upon entering the home, there is a versatile, carpeted flex space to the left and a spacious family room warmed by a gas fireplace that flows seamlessly into the kitchen. Stylish vinyl plank flooring adorns the main living areas. The kitchen is well-appointed with enhanced cabinetry and appliances, quartz countertops with a tile backsplash, and a large center island. To the right of the kitchen is a formal dining room and to the left is a mudroom with built-in lockers, perfect for storage. Access the patio from the kitchen and enjoy some outdoor relaxation or entertain guests. On the 2nd floor, the owner's suite features an expansive closet and a private bathroom with a tile shower and double bowl vanity. Adjacent to the suite are 3 additional bedrooms, a full bathroom, and a convenient laundry room.





Single Family

# 509 Sunset Boulevard

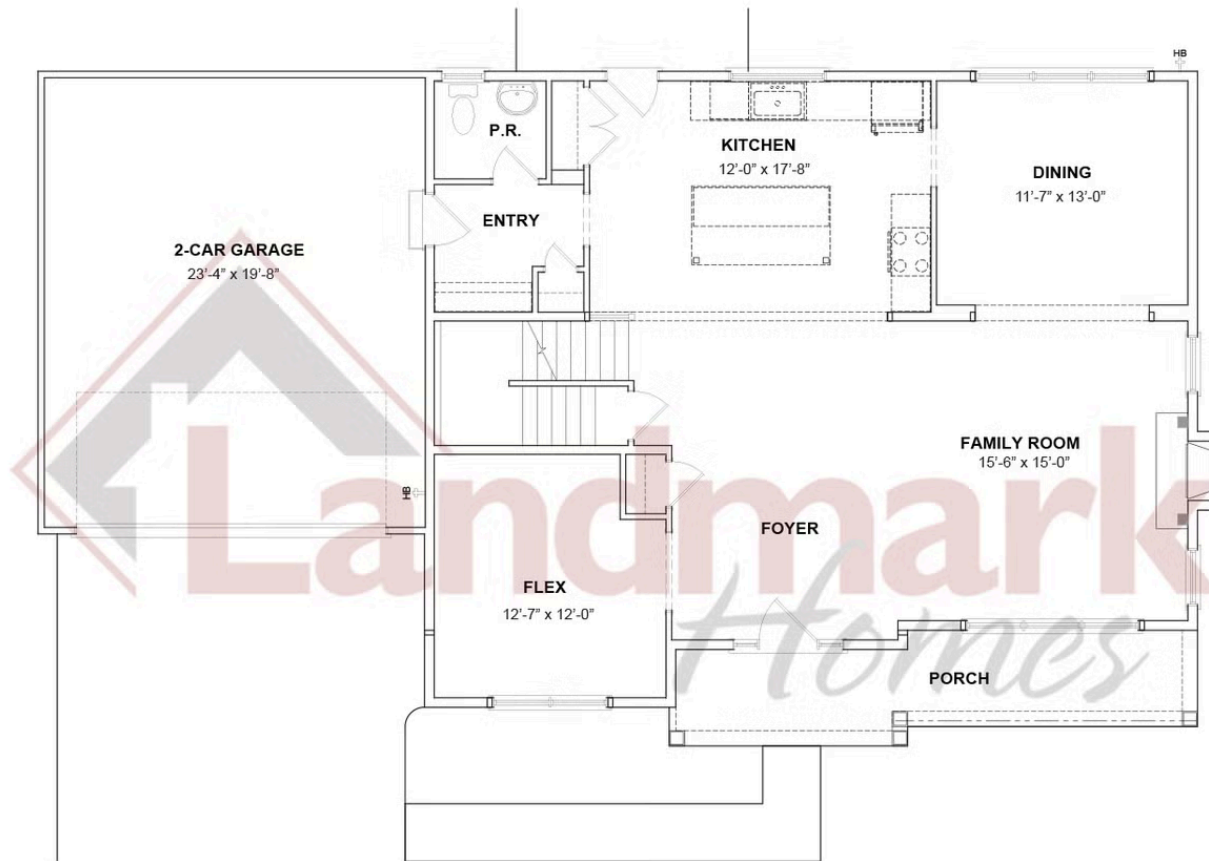
Annville, PA 17003

COMMUNITY SALES MANAGER

Jilian Treadway

Call/Text 717-799-6695

## FIRST FLOOR



© 2025 Landmark Builders, Inc. We enforce our intellectual property rights to the fullest extent permitted by applicable law. Elevations and landscaping are artists' conceptions only. Floor plans may vary depending on elevation selected. Actual construction documents take precedence over artwork.

Document generated 2/22/26





Single Family

## 509 Sunset Boulevard

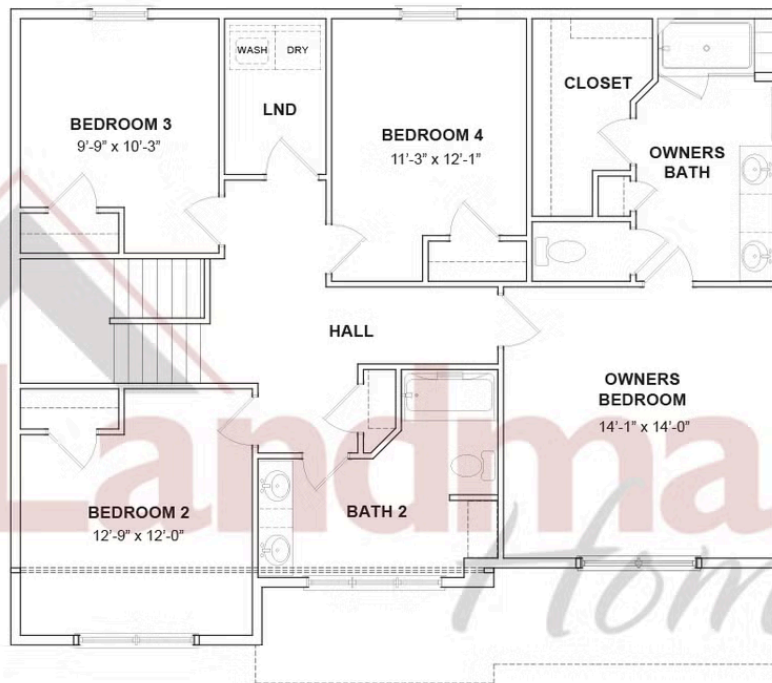
Anncville, PA 17003

COMMUNITY SALES MANAGER

Jilian Treadway

Call/Text 717-799-6695

### SECOND FLOOR



© 2025 Landmark Builders, Inc. We enforce our intellectual property rights to the fullest extent permitted by applicable law. Elevations and landscaping are artists' conceptions only. Floor plans may vary depending on elevation selected. Actual construction documents take precedence over artwork.

Document generated 2/22/26

