



Single Family

501 Sunset Boulevard

Annville, PA 17003

COMMUNITY SALES MANAGER

Jilian Treadway

Call/Text 717-799-6695

MODEL HOME



Call for Price

Plan: Charlotte

4 Bedrooms

2.5 Bathrooms

2,743 Sq. Ft.

Model Home/Not Listed for Sale: New contemporary home features a welcoming front porch, stylish exterior, and a 2-car, side-load garage. The garage opens to a mudroom complete with a large pantry, powder room, and a built-in bench. The first floor boasts durable vinyl plank flooring and 9' ceilings. To the front of the home is a flex room that can be used as a study, living room, or other versatile space. The kitchen is well-appointed with quartz countertops, a tile backsplash, and enhanced cabinetry and appliances. Adjacent to the kitchen is a sunny dining area with access to the rear patio. The comfortable family room is warmed by a cozy fireplace with floor to ceiling stone, the perfect focal point of the room. The 2nd floor owner's suite features an expansive closet and a private bathroom with a tile shower and double bowl vanity. Also on the 2nd floor there are 3 additional bedrooms, a full bathroom, and a convenient laundry room.

Document generated 2/22/26





Single Family

501 Sunset Boulevard

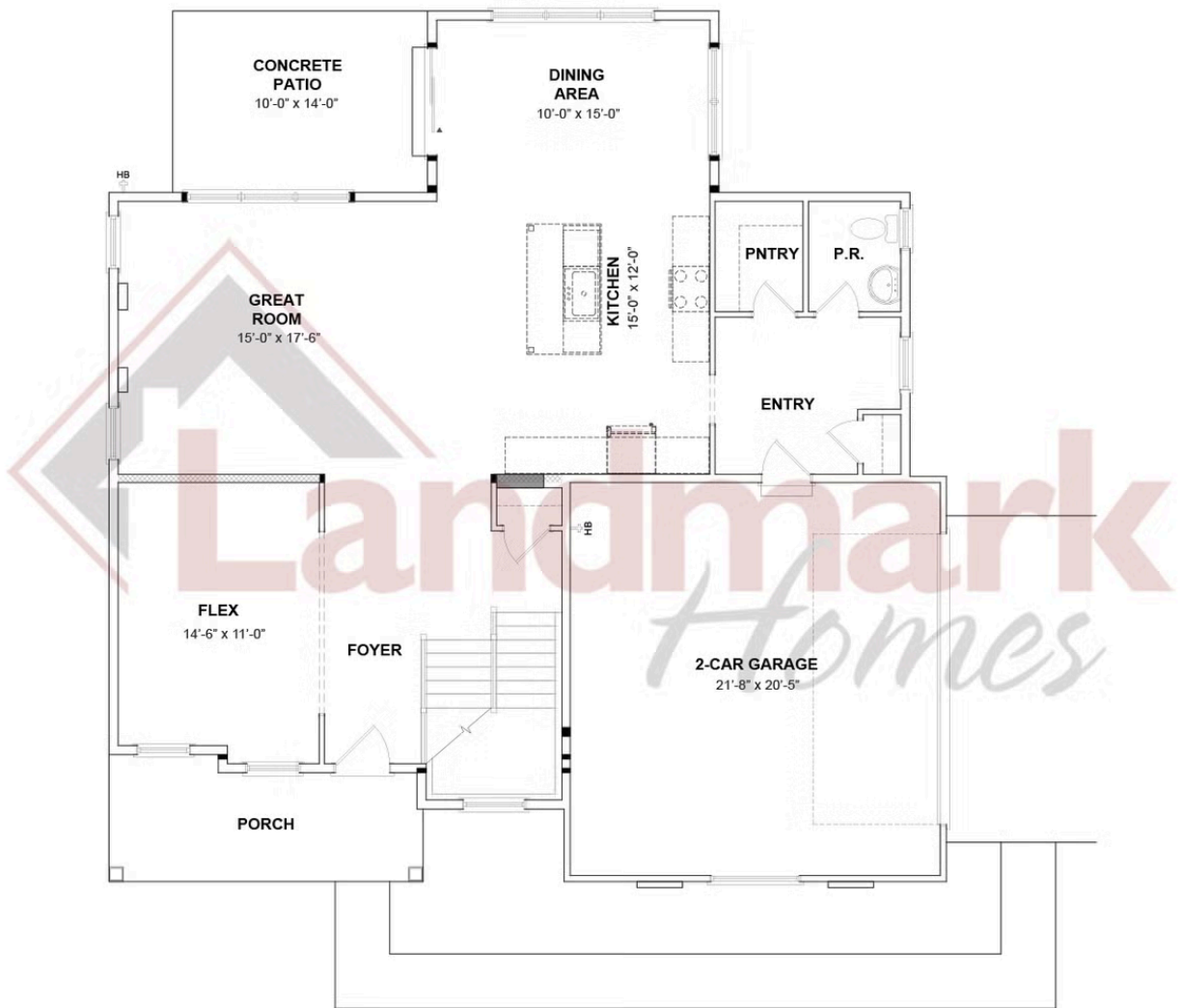
Annville, PA 17003

COMMUNITY SALES MANAGER

Jilian Treadway

Call/Text 717-799-6695

FIRST FLOOR



© 2025 Landmark Builders, Inc. We enforce our intellectual property rights to the fullest extent permitted by applicable law. Elevations and landscaping are artists' conceptions only. Floor plans may vary depending on elevation selected. Actual construction documents take precedence over artwork.





Single Family

501 Sunset Boulevard

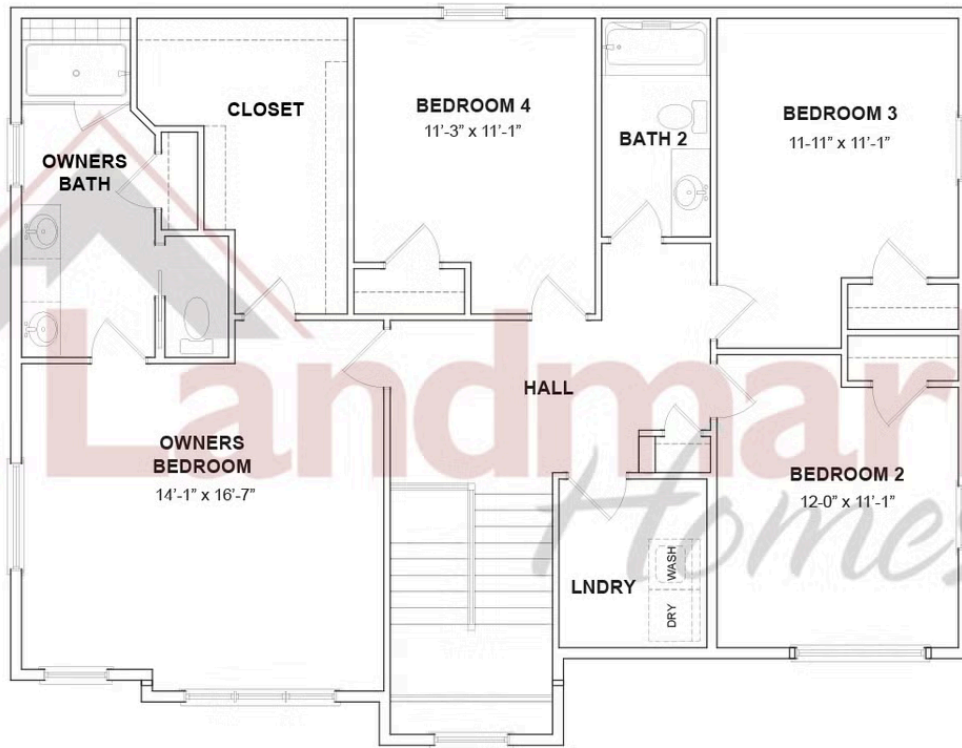
Annville, PA 17003

COMMUNITY SALES MANAGER

Jilian Treadway

Call/Text 717-799-6695

SECOND FLOOR



© 2025 Landmark Builders, Inc. We enforce our intellectual property rights to the fullest extent permitted by applicable law. Elevations and landscaping are artists' conceptions only. Floor plans may vary depending on elevation selected. Actual construction documents take precedence over artwork.

Document generated 2/22/26

