



Single Family
Wesley
Southgate

COMMUNITY SALES MANAGER

Lori Kahl

Call/Text 717-314-1448



Priced From
\$530,000

3 Elevations Available

4 Bedrooms

2.5 Bathrooms

2,612+ Sq. Ft.

2 Car Garage

Spacious home with room to grow, including 4 bedrooms and 2.5 baths. Generous owner's suite with private bathroom and large closet. Optional bonus room over the garage for study/den. Eat-in kitchen with breakfast area and access to formal dining room makes entertaining a breeze. Oversized family room with access to patio.

Available Elevations



Upgraded B Transitional



Upgraded A Traditional

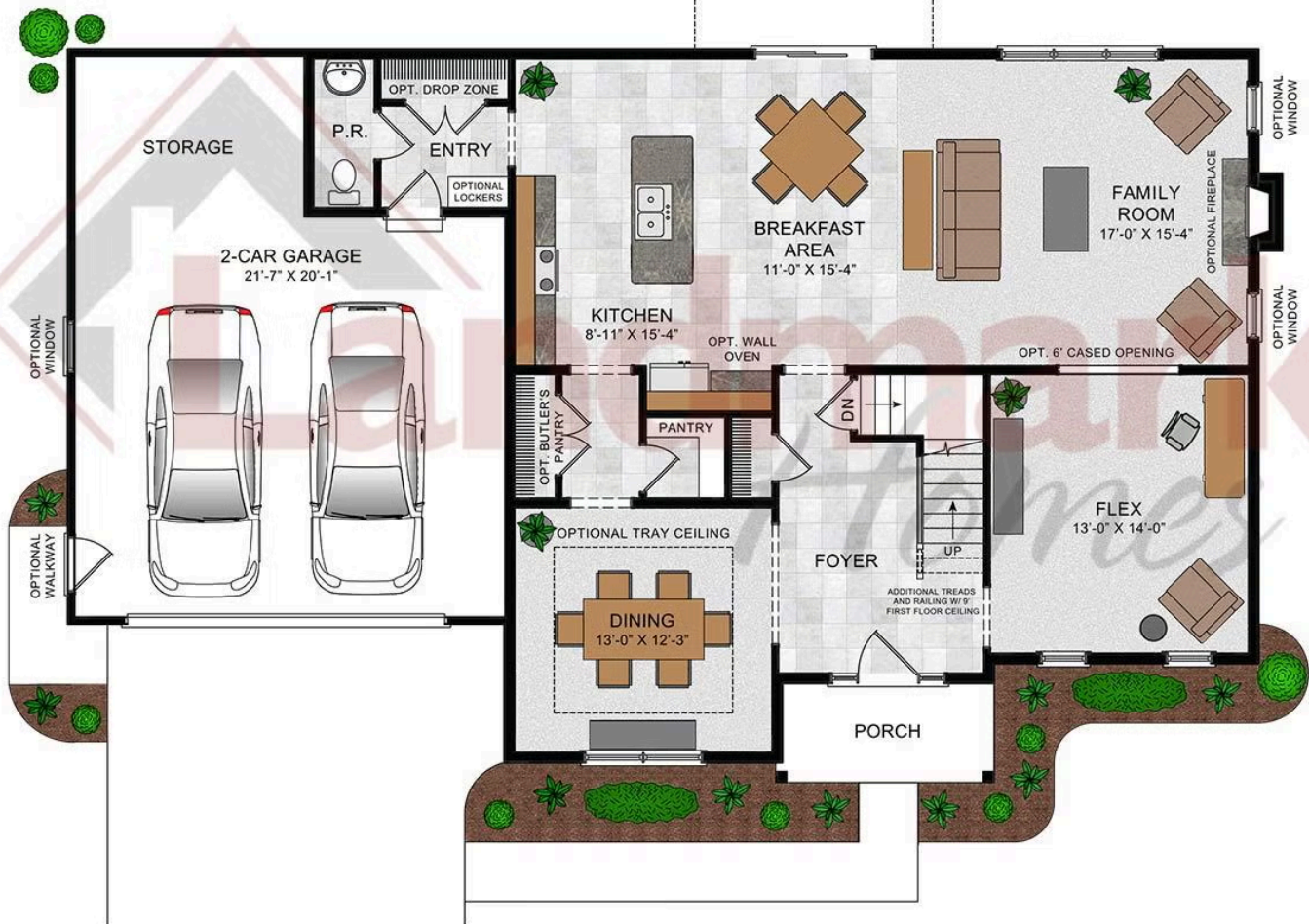


Upgraded C Trademark



FIRST FLOOR

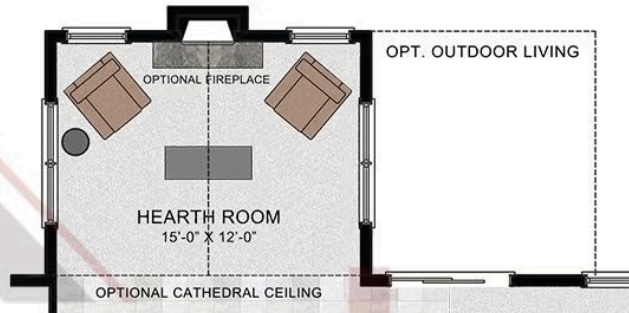
OPT. OUTDOOR LIVING



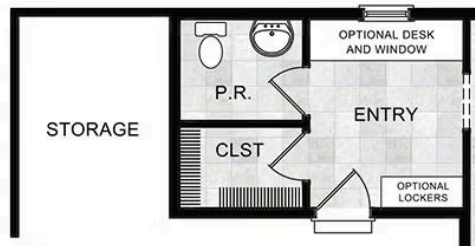
© 2023 Landmark Builders, Inc. We enforce our intellectual property rights to the fullest extent permitted by applicable law. Elevations and landscaping are artists' conceptions only. Floor plans may vary depending on elevation selected. Actual construction documents take precedence over artwork.

Wesley

OPTIONAL HEARTH ROOM



OPTIONAL EXPANDED ENTRY



© 2023 Landmark Builders, Inc. We enforce our intellectual property rights to the fullest extent permitted by applicable law. Elevations and landscaping are artists' conceptions only. Floor plans may vary depending on elevation selected. Actual construction documents take precedence over artwork.

SECOND FLOOR



© 2023 Landmark Builders, Inc. We enforce our intellectual property rights to the fullest extent permitted by applicable law. Elevations and landscaping are artists' conceptions only. Floor plans may vary depending on elevation selected. Actual construction documents take precedence over artwork.



Single Family
Wesley
Southgate

COMMUNITY SALES MANAGER

Lori Kahl

Call/Text 717-314-1448





Single Family
Wesley
Southgate

COMMUNITY SALES MANAGER

Lori Kahl

Call/Text 717-314-1448

