



Single Family

140 Alexandria Drive

Annville, PA 17003

COMMUNITY SALES MANAGER

Lori Kahl

Call/Text 717-314-1448

MODEL HOME



Call for Price

Plan: Silverbrooke

5 Bedrooms

4.0 Bathrooms

4,704 Sq. Ft.

Model Home/Not Listed for Sale: UNDER CONSTRUCTION. Designer details abound in this stately 2-story home with craftsman style exterior and a 2-car garage with mudroom entry. Upon entering the home there is a gorgeous study with French doors and picture frame molding on the left and an elegant dining room with wainscoting and chair rail detail. A convenient butler's pantry lays between the dining room and the open kitchen with quartz countertops and backsplash, enhanced stainless appliances and cabinetry, a large center island, and stained wood beams on the ceiling. The sunny breakfast area with a stone accent wall provides access to a spacious screened-in patio. Behind the kitchen is the convenient prep kitchen and pantry, perfect for entertaining. Open to the kitchen is a 2-story great room featuring a stunning fireplace with floor-to-ceiling stone and arched built-in cabinets and shelving on either side. Tucked away from the main living area is a guest bedroom and full bathroom. Upstairs, the well-appointed owner's suite with a cathedral ceiling boasts a private bathroom with a freestanding tub, two separate vanities, a tile shower, and an oversized closet. There are 3 additional bedrooms with large closets, 2 full bathrooms including a jack and jill bathroom, and a convenient laundry room with a laundry tub and a built-in shelf. Head to the finished basement for some relaxation and fun! Play some billiards, enjoy the media area or grab a snack at the kitchenette.





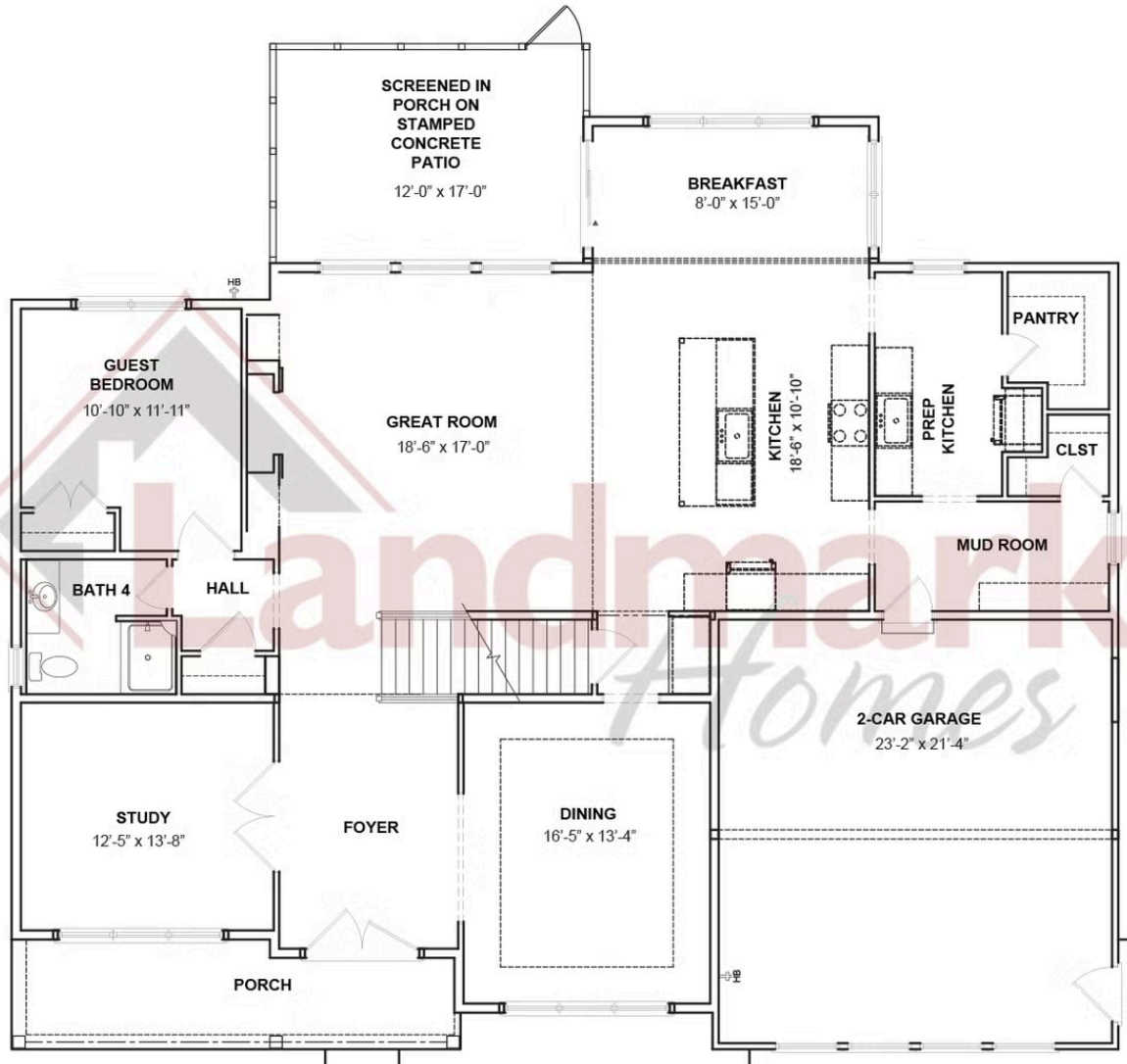
Single Family
140 Alexandria Drive
Annville, PA 17003

COMMUNITY SALES MANAGER

Lori Kahl

Call/Text 717-314-1448

FIRST FLOOR



© 2025 Landmark Builders, Inc. We enforce our intellectual property rights to the fullest extent permitted by applicable law. Elevations and landscaping are artists' conceptions only. Floor plans may vary depending on elevation selected. Actual construction documents take precedence over artwork.





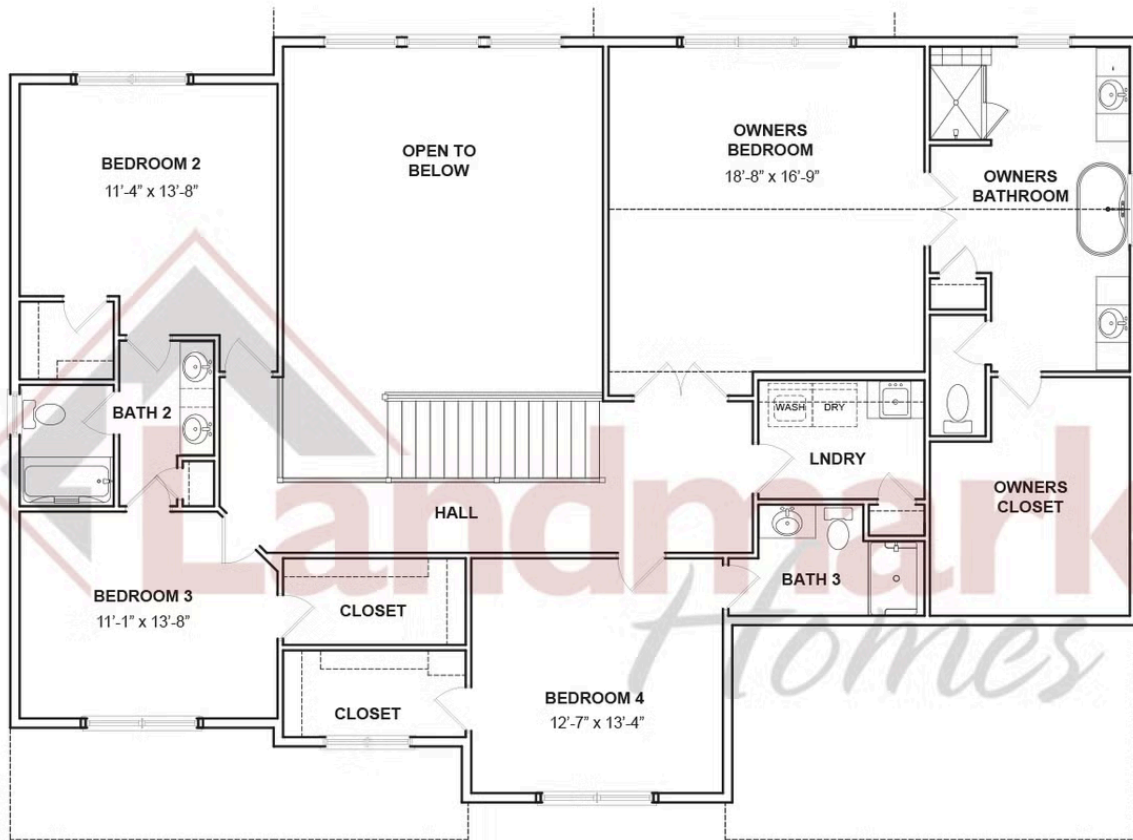
Single Family
140 Alexandria Drive
Annville, PA 17003

COMMUNITY SALES MANAGER

Lori Kahl

Call/Text 717-314-1448

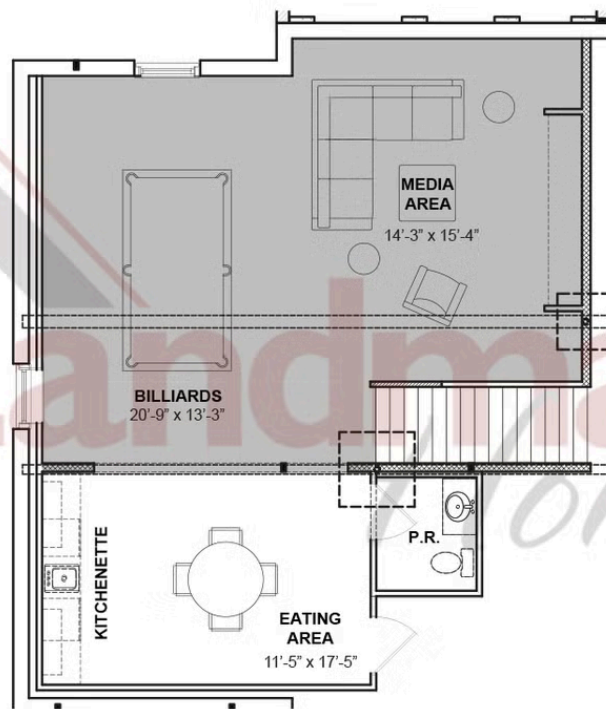
SECOND FLOOR



© 2025 Landmark Builders, Inc. We enforce our intellectual property rights to the fullest extent permitted by applicable law. Elevations and landscaping are artists' conceptions only. Floor plans may vary depending on elevation selected. Actual construction documents take precedence over artwork.



BASEMENT LEVEL



© 2025 Landmark Builders, Inc. We enforce our intellectual property rights to the fullest extent permitted by applicable law. Elevations and landscaping are artists' conceptions only. Floor plans may vary depending on elevation selected. Actual construction documents take precedence over artwork.