



Single Family
129 Alexandria Dr
Annville, PA 17003

COMMUNITY SALES MANAGER

Lori Kahl

Call/Text 717-314-1448

MOVE-IN READY



Home Priced at
\$535,600

Plan: Huntington

4 Bedrooms

2.5 Bathrooms

2,171 Sq. Ft.

This thoughtfully designed, 2-story home features 9' ceilings on the first floor and a 2-car garage with mudroom entry. A welcoming front porch provides entry to the foyer. To the right of the foyer is a versatile, carpeted flex space and to the left is the formal dining room. The open kitchen is well-equipped with stainless steel appliances, granite countertops with a tile backsplash and a large center island. Adjacent to the kitchen is the family room with a cozy fireplace and sliding glass door access to the rear patio. On the 2nd floor, the owner's suite includes a private bathroom with a double bowl vanity, 5' shower, and a spacious closet. Down the hall is a convenient laundry room, 3 additional bedrooms and a full bathroom.

Document generated 12/24/25



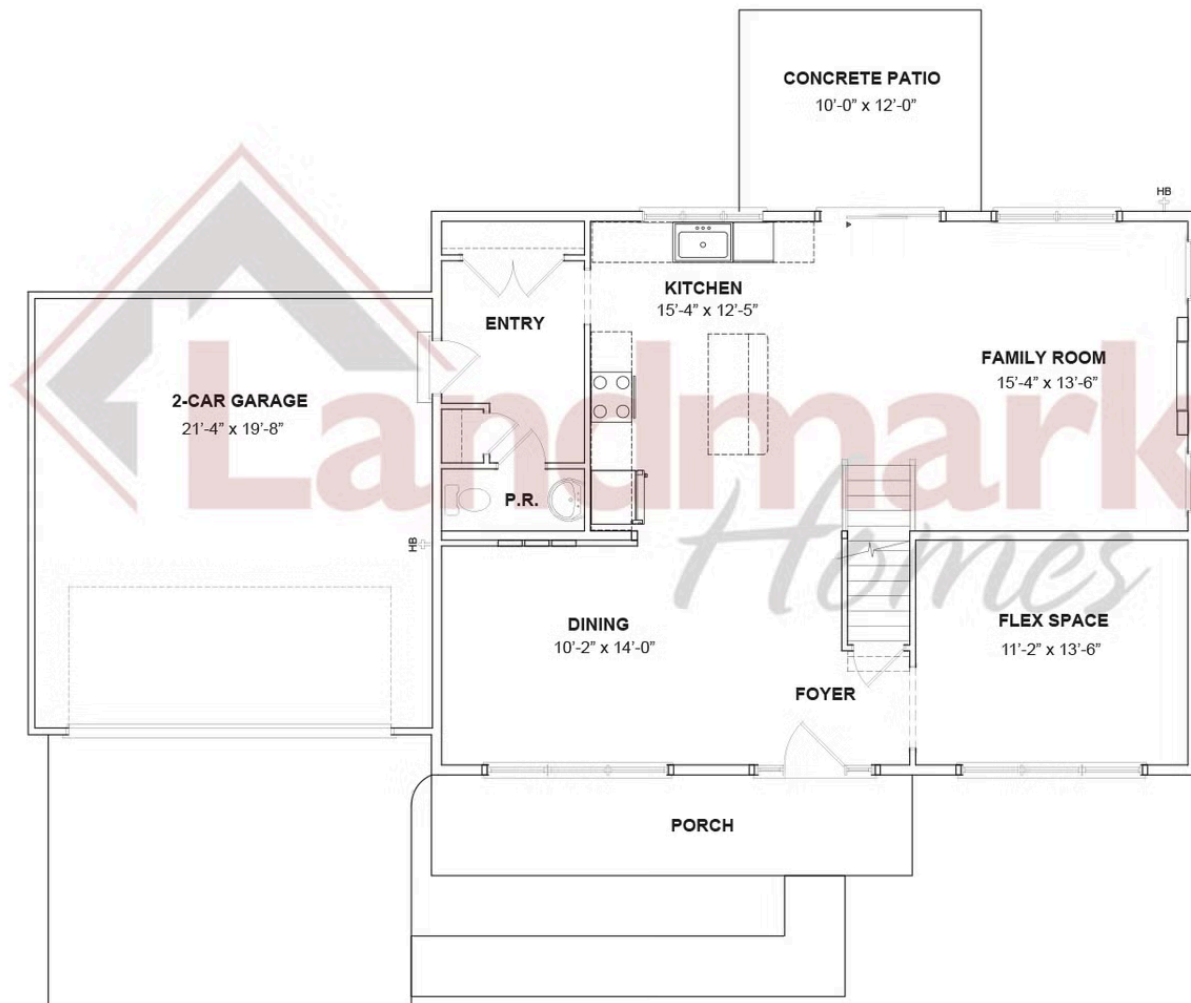


Single Family
129 Alexandria Dr
Annville, PA 17003

COMMUNITY SALES MANAGER

Lori Kahl
Call/Text 717-314-1448

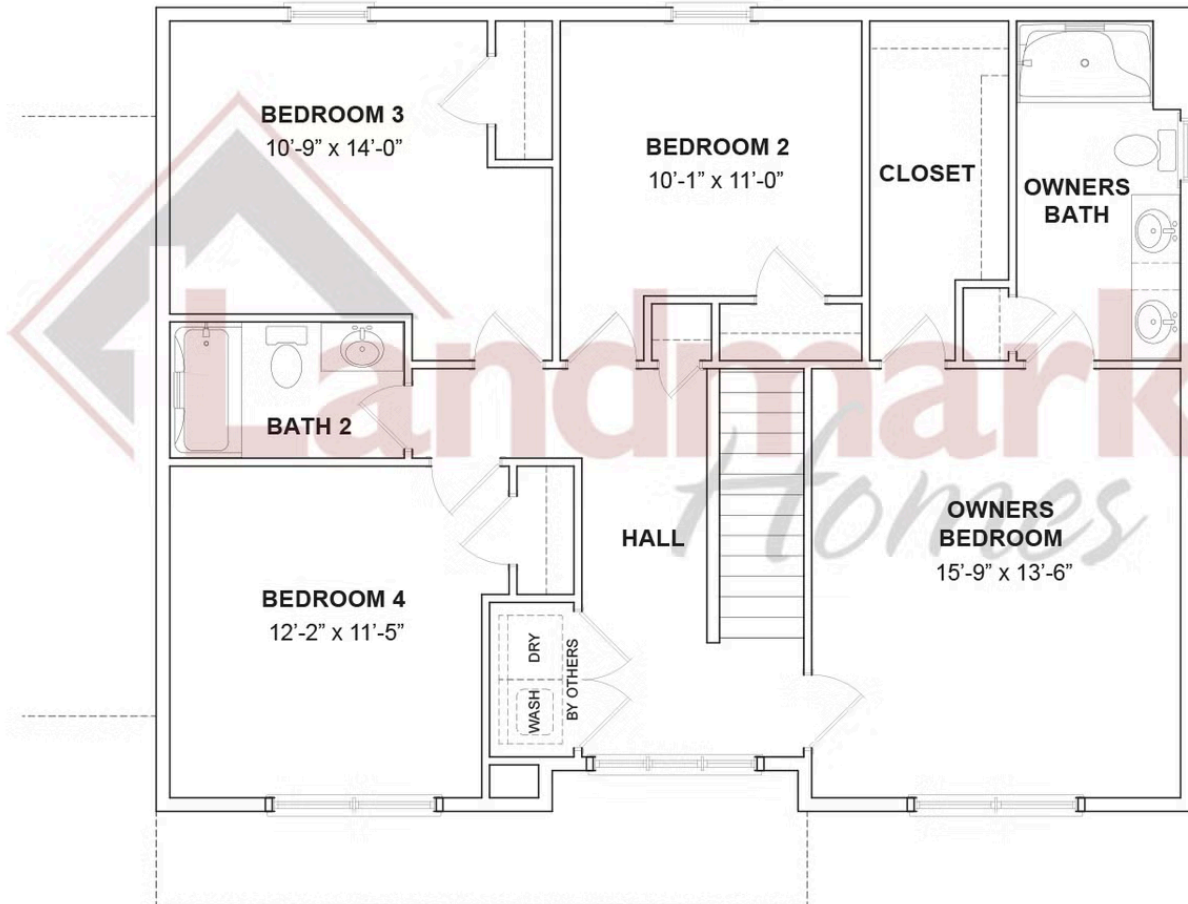
FIRST FLOOR



© 2025 Landmark Builders, Inc. We enforce our intellectual property rights to the fullest extent permitted by applicable law. Elevations and landscaping are artists' conceptions only. Floor plans may vary depending on elevation selected. Actual construction documents take precedence over artwork.



SECOND FLOOR



© 2025 Landmark Builders, Inc. We enforce our intellectual property rights to the fullest extent permitted by applicable law. Elevations and landscaping are artists' conceptions only. Floor plans may vary depending on elevation selected. Actual construction documents take precedence over artwork.