



Single Family
124 Alexandria Dr
Annville, PA 17003

COMMUNITY SALES MANAGER

Lori Kahl

Call/Text 717-314-1448

MOVE-IN READY



Representative Photo Only

Home Priced at
\$688,300

Plan: Charlotte

4 Bedrooms

2.5 Bathrooms

2,651 Sq. Ft.

Striking contemporary home features a welcoming front porch, stylish exterior, and a 3-car garage. The garage opens to a mudroom complete with a large pantry, powder room, and a built-in bench. The first floor boasts durable vinyl plank flooring and 9' ceilings. To the front of the home is a flex room that can be used as a study, living room, or other versatile space. The kitchen is well-appointed with quartz countertops, a tile backsplash, and enhanced cabinetry and appliances. Adjacent to the kitchen is a sunny dining area with access to the rear composite deck and a comfortable family room warmed by a cozy fireplace with floor to ceiling stone. The 2nd floor owner's suite features an expansive closet and a private bathroom with a tile shower and double bowl vanity. Also on the 2nd floor are 3 additional bedrooms, a full bathroom, and a convenient laundry room.



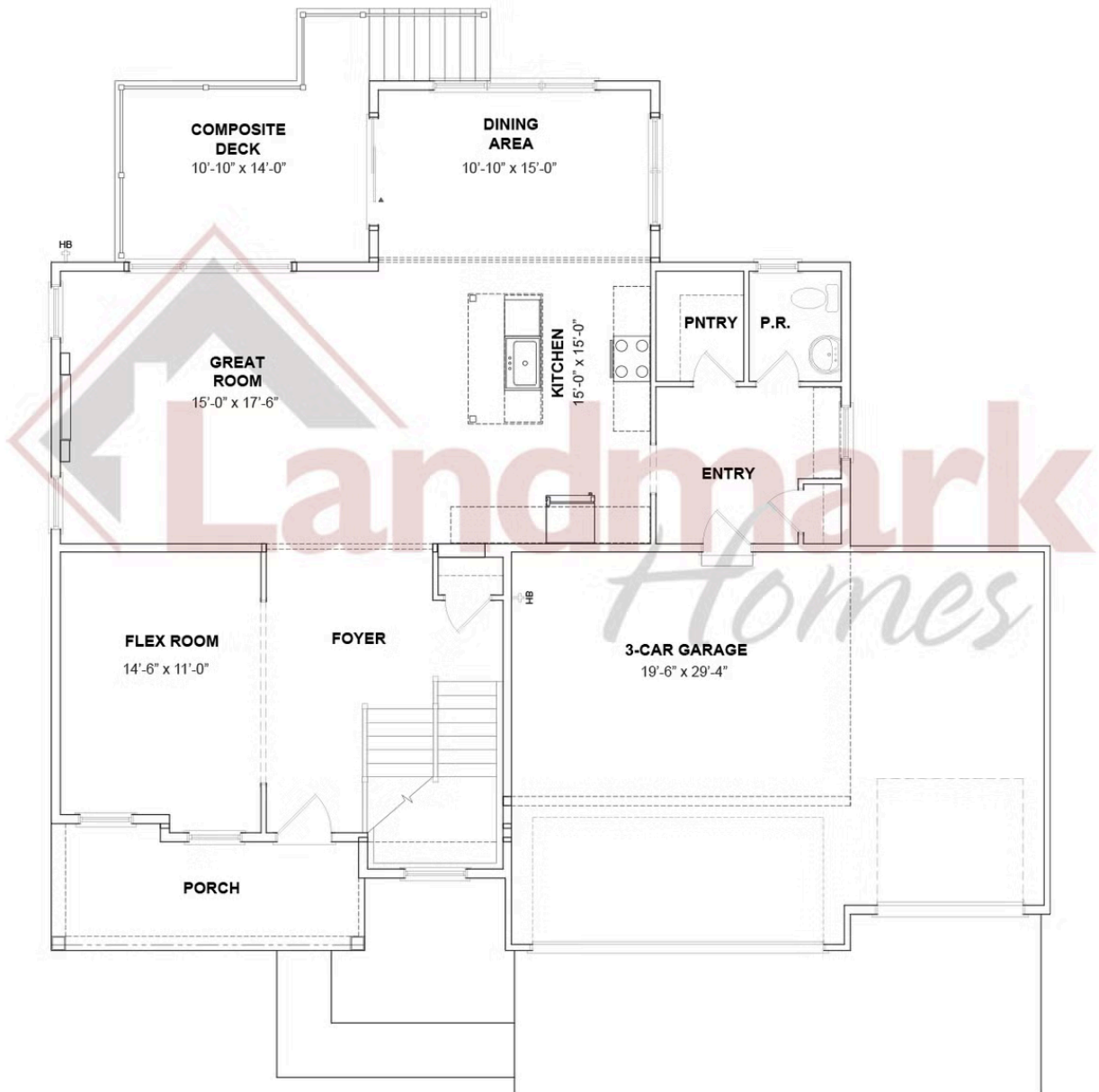


Single Family
124 Alexandria Dr
Annville, PA 17003

COMMUNITY SALES MANAGER

Lori Kahl
Call/Text 717-314-1448

FIRST FLOOR



© 2025 Landmark Builders, Inc. We enforce our intellectual property rights to the fullest extent permitted by applicable law. Elevations and landscaping are artists' conceptions only. Floor plans may vary depending on elevation selected. Actual construction documents take precedence over artwork.



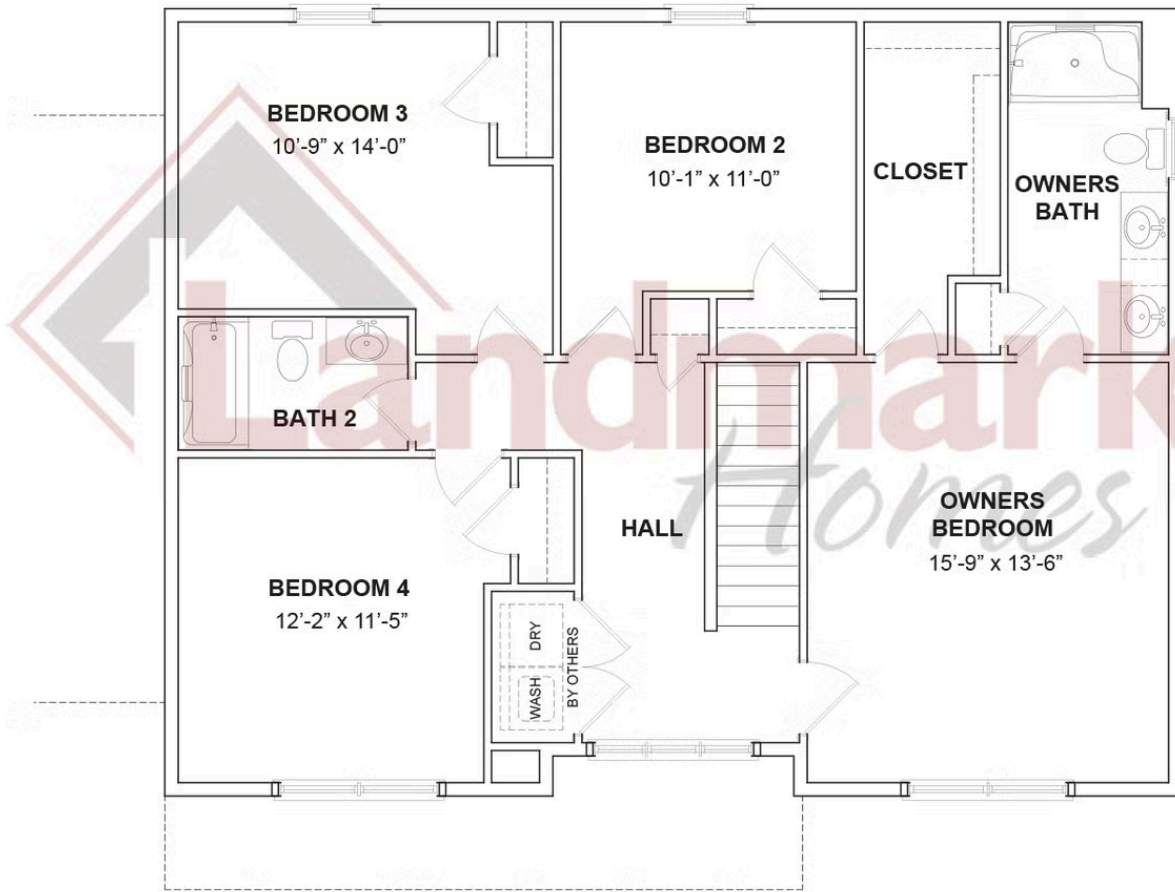


Single Family
124 Alexandria Dr
Annville, PA 17003

COMMUNITY SALES MANAGER

Lori Kahl
Call/Text 717-314-1448

SECOND FLOOR



© 2025 Landmark Builders, Inc. We enforce our intellectual property rights to the fullest extent permitted by applicable law. Elevations and landscaping are artists' conceptions only. Floor plans may vary depending on elevation selected. Actual construction documents take precedence over artwork.

Document generated 12/24/25

