

MOVE-IN READY



Home Priced at \$459,800

WILLOW



BEDROOMS: 3



BATHROOMS: 2.5

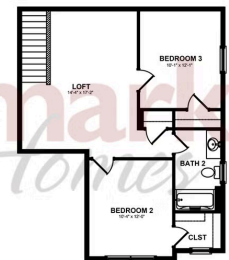
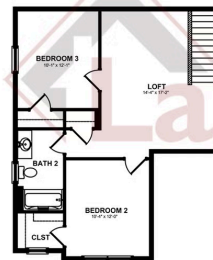
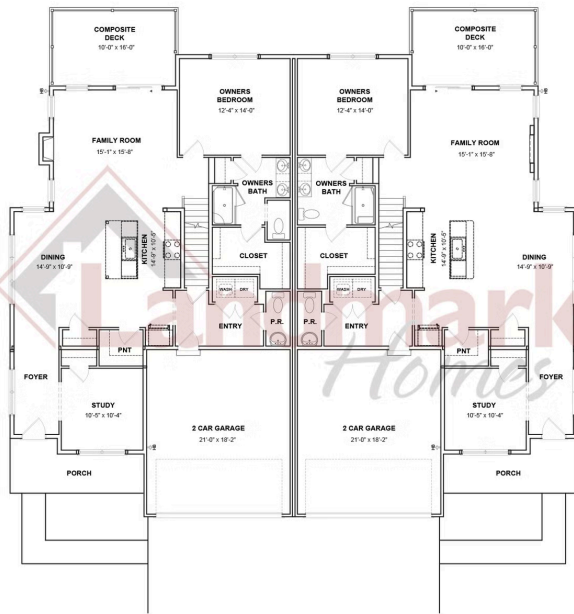


SQ FT: 2,105

Edgemont Preserve | 38 Canterbury Lane, Annville, PA 17003 | Homesite: #43

FIRST FLOOR

SECOND FLOOR



© 2025 Landmark Builders, Inc. We enforce our intellectual property rights to the fullest extent permitted by applicable law. Elevations and landscaping are artists' conceptions only. Floor plans may vary depending on elevation selected. Actual construction documents take precedence over artwork.

© 2025 Landmark Builders, Inc. We enforce our intellectual property rights to the fullest extent permitted by applicable law. Elevations and landscaping are artists' conceptions only. Floor plans may vary depending on elevation selected. Actual construction documents take precedence over artwork.

© 2026 Landmark Builders, Inc. We enforce our intellectual property rights to the fullest extent permitted by applicable law. Elevations and landscaping are artists' conceptions only. Actual construction documents take precedence over artwork. Similar photos shown are for representative purposes only. Details subject to change without notification. See Community Sales Manager for details.

Document generated 4/24/26

Call/Text Andrew Barshinger at 717-371-6466

info@OwnALandmark.com

OwnALandmark.com

