



Duplex
2 Kensington Avenue
Annville, PA 17003

COMMUNITY SALES MANAGER

Andrew Barshinger

Call/Text 717-371-6466

MODEL HOME



Call for Price

Plan: Willow

3 Bedrooms

2.5 Bathrooms

2,624 Sq. Ft.

This brand-new 2-story luxury duplex at Edgemont Preserve embodies modern sophistication, blending stylish design with timeless comfort. The first-floor features 9-foot ceilings, durable vinyl plank flooring, and a convenient 2-car garage with a mudroom entry. Just off the foyer, a bright and versatile study offers the perfect space for a home office or quiet retreat.

The well-appointed kitchen is a true highlight, featuring stainless steel appliances, quartz countertops with a chic tile backsplash, a spacious center island, and a dining area. The family room is warm and inviting, complete with a cathedral ceiling and a fireplace with floor-to-ceiling stone. Sliding glass doors open to the screened-in composite deck—perfect for outdoor relaxation or entertaining. The first-floor owner's suite provides a serene retreat, offering a generous closet and a private bath with a tile shower and double bowl vanity.

Upstairs, two additional bedrooms, a stylish hall bath, and a versatile loft space complete the second floor, providing ample room for both comfort and functionality. One more exciting feature is the partially finished basement, complete with a beautiful kitchenette.

Located in Annville, PA within the Palmyra Area School District, Edgemont Preserve offers a charming small-town setting with unparalleled access to leisure, recreation, and everyday conveniences. Just minutes from the area's best dining, shopping, and premier attractions—including Hersheypark, the Giant Center, Mt. Gretna Lake, and several renowned golf courses—this exceptional community places you close to Hershey, Lebanon, and Harrisburg, with convenient access to Routes 422 and 322. Embrace the perfect harmony of luxury, comfort, and location in your new home at Edgemont Preserve. Contact the Community Sales Manager at 717-371-6466 today and discover everything Edgemont Preserve has to offer.





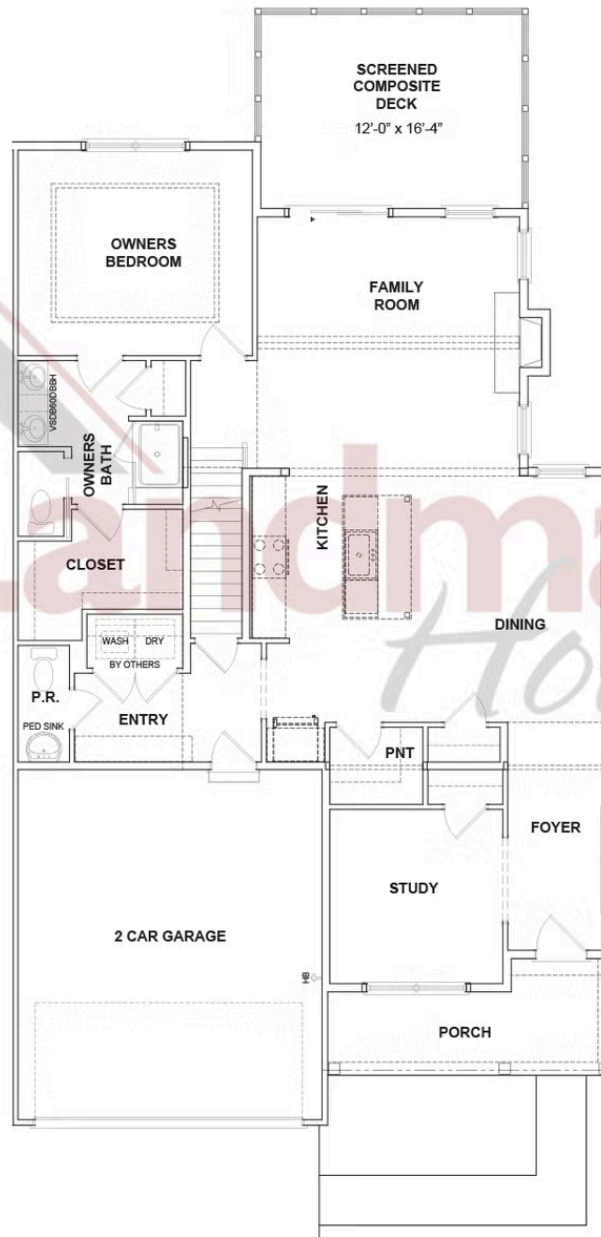
Duplex
2 Kensington Avenue
Annville, PA 17003

COMMUNITY SALES MANAGER

Andrew Barshinger

Call/Text 717-371-6466

FIRST FLOOR



© 2025 Landmark Builders, Inc. We enforce our intellectual property rights to the fullest extent permitted by applicable law. Elevations and landscaping are artists' conceptions only. Floor plans may vary depending on elevation selected. Actual construction documents take precedence over artwork.



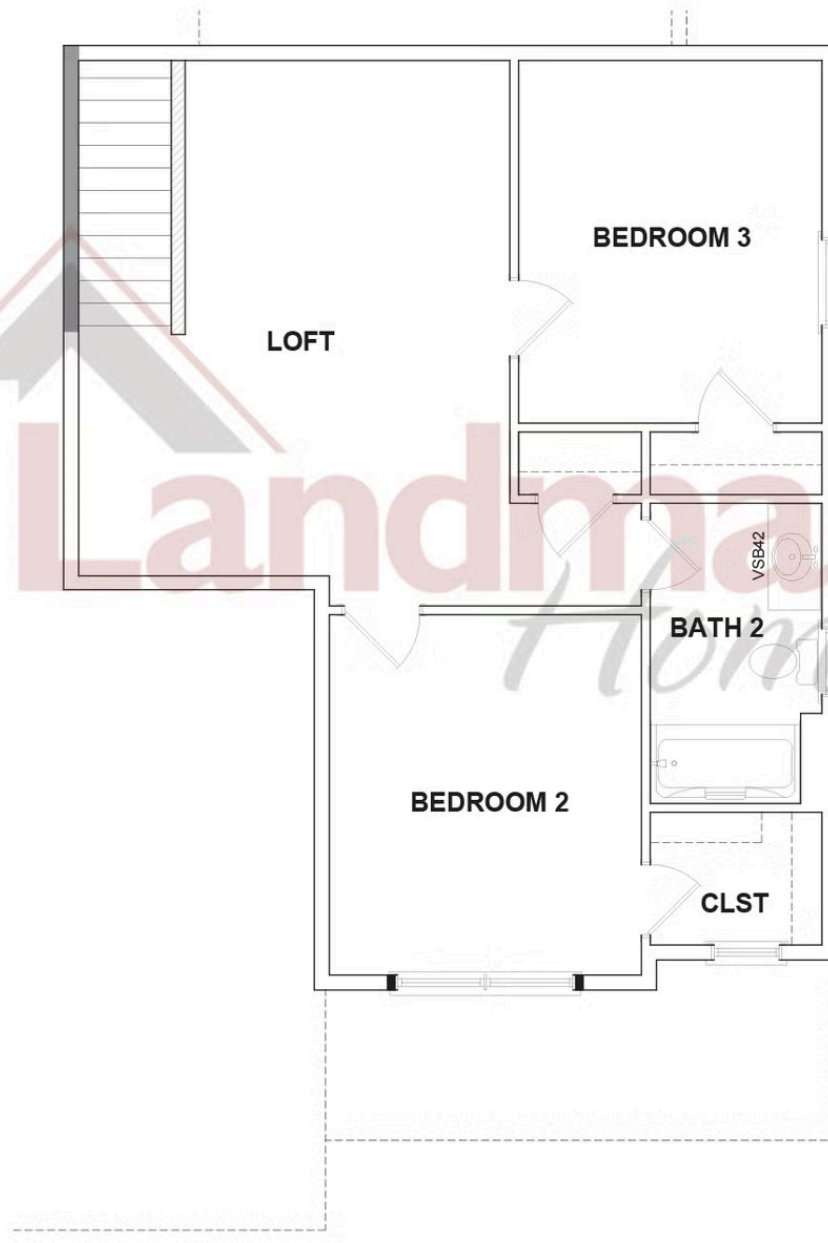


Duplex
2 Kensington Avenue
Annville, PA 17003

COMMUNITY SALES MANAGER

Andrew Barshinger
Call/Text 717-371-6466

SECOND FLOOR



© 2025 Landmark Builders, Inc. We enforce our intellectual property rights to the fullest extent permitted by applicable law. Elevations and landscaping are artists' conceptions only. Floor plans may vary depending on elevation selected. Actual construction documents take precedence over artwork.



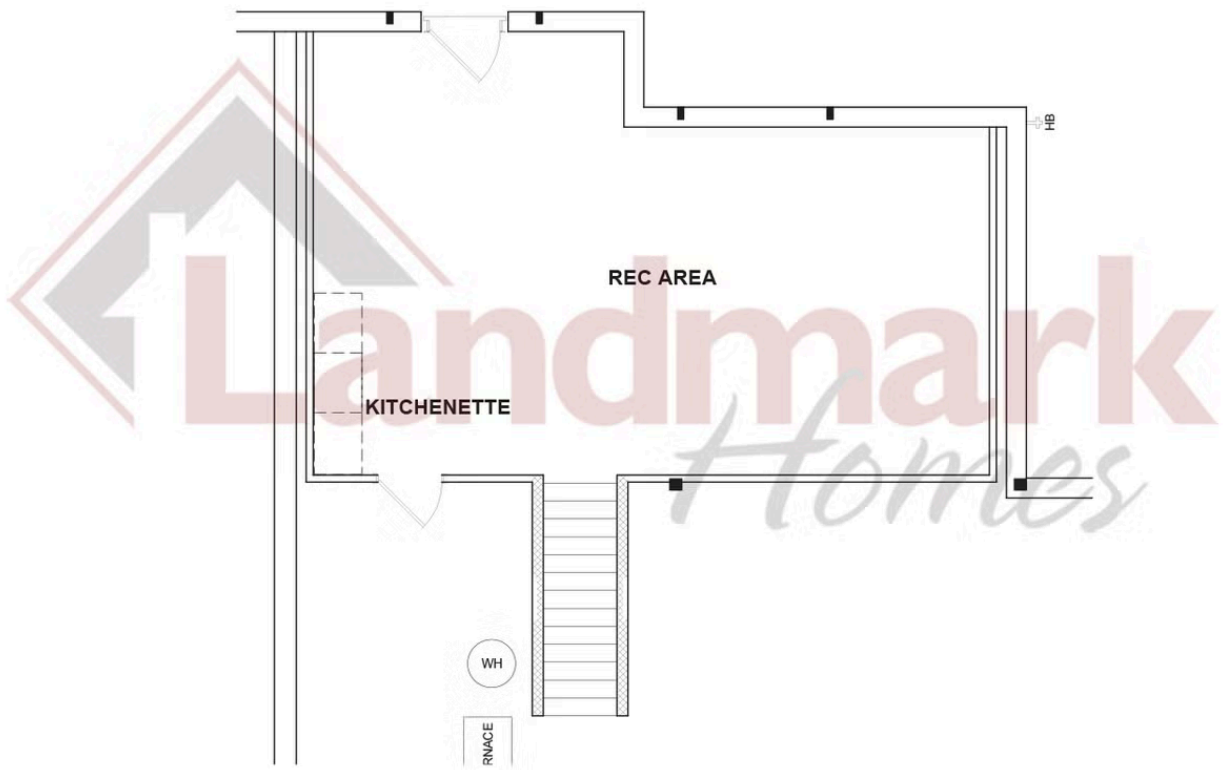


Duplex
2 Kensington Avenue
Annville, PA 17003

COMMUNITY SALES MANAGER

Andrew Barshinger
Call/Text 717-371-6466

BASEMENT LEVEL



© 2025 Landmark Builders, Inc. We enforce our intellectual property rights to the fullest extent permitted by applicable law. Elevations and landscaping are artists' conceptions only. Floor plans may vary depending on elevation selected. Actual construction documents take precedence over artwork.

