



Duplex
Willow
Edgemont Preserve

COMMUNITY SALES MANAGER

Andrew Barshinger

Call/Text 717-371-6466



Priced From
\$410,100

2 Elevations Available

3 Bedrooms

2.5 Bathrooms

2,105+ Sq. Ft.

2 Car Garage

Welcome to the Willow, a thoughtfully designed duplex home plan, nestled in the prestigious Edgemont Preserve community. This 2-story duplex blends elegant sophistication with everyday comfort, offering a harmonious balance of style, functionality, and refined living. Step into the light-filled foyer and you're immediately greeted by a well-appointed study at the front of the home — perfect for a home office, creative space, or quiet retreat. Just beyond, the heart of the home unfolds with a gourmet kitchen that opens beautifully to a sun-drenched dining area and an inviting family room. This seamless layout is ideal for entertaining guests or relaxing with loved ones in a warm, open setting. The main level is home to a luxurious first-floor owner's suite, thoughtfully tucked away for privacy. This serene retreat features a private bath and a spacious closet, offering the ultimate in convenience and comfort. Step just outside the family room and enjoy a private backyard patio, perfect for morning coffee, evening relaxation, or hosting weekend gatherings. Upstairs, a versatile loft creates the perfect space for a media room, play area, or second lounge. Two generously sized bedrooms and a stylish hall bath complete the second level, making it ideal for family or guests. The attached two-car garage adds convenience and functionality, and an unfinished basement offers limitless possibilities, whether you envision a home gym, additional living space, or extra storage, the potential is yours to unlock.

Available Elevations



Willow Exterior



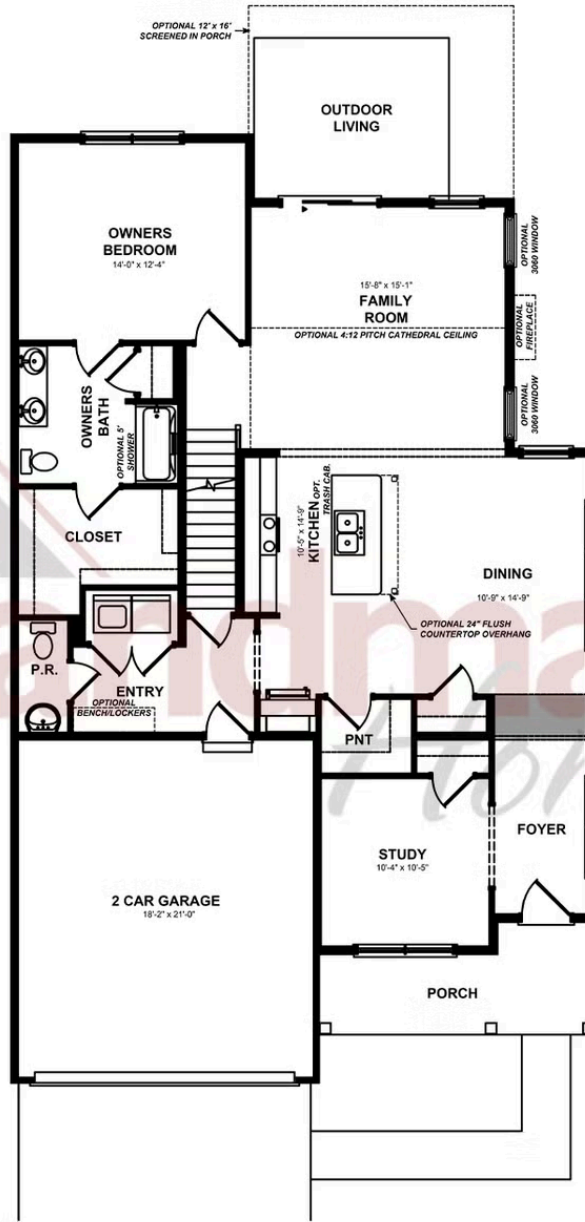
Willow Exterior

Document generated 4/16/26

© 2026 Landmark Builders, Inc. We enforce our intellectual property rights to the fullest extent permitted by applicable law. Elevations and landscaping are artists' conceptions only. Actual construction documents take precedence over artwork. Similar photos shown are for representative purposes only. Details subject to



FIRST FLOOR

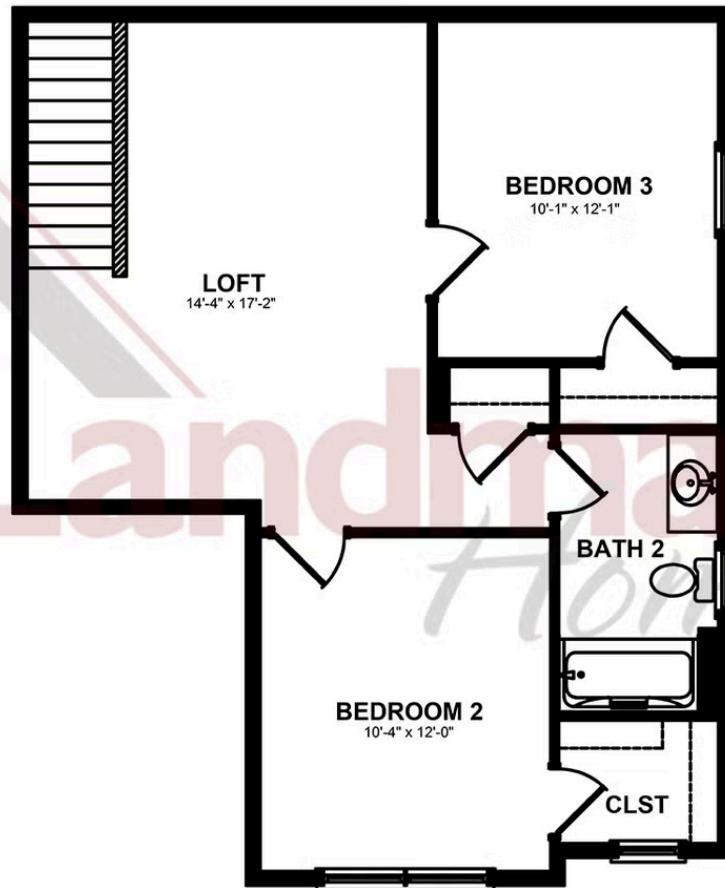


© 2026 Landmark Builders, Inc. We enforce our intellectual property rights to the fullest extent permitted by applicable law. Elevations and landscaping are artists' conceptions only. Floor plans may vary depending on elevation selected. Actual construction documents take precedence over artwork.

© 2026 Landmark Builders, Inc. We enforce our intellectual property rights to the fullest extent permitted by applicable law. Elevations and landscaping are artists' conceptions only. Actual construction documents take precedence over artwork. Similar photos shown are for representative purposes only. Details subject to change without notification. See Community Sales Manager for details.

Document generated 4/16/26

SECOND FLOOR

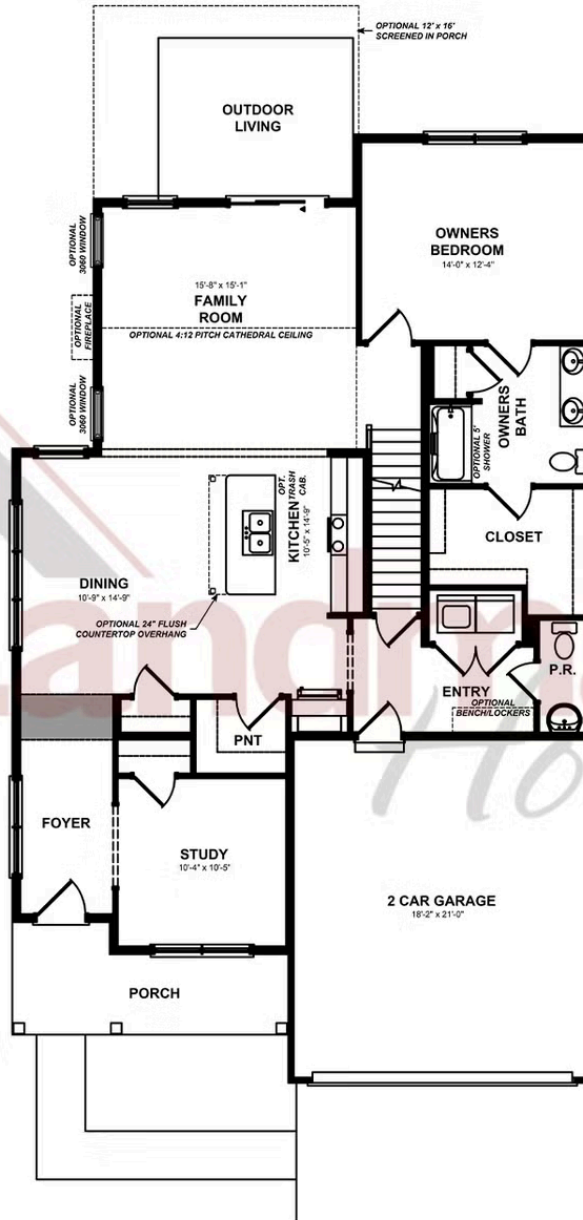


© 2026 Landmark Builders, Inc. We enforce our intellectual property rights to the fullest extent permitted by applicable law. Elevations and landscaping are artists' conceptions only. Floor plans may vary depending on elevation selected. Actual construction documents take precedence over artwork.

© 2026 Landmark Builders, Inc. We enforce our intellectual property rights to the fullest extent permitted by applicable law. Elevations and landscaping are artists' conceptions only. Actual construction documents take precedence over artwork. Similar photos shown are for representative purposes only. Details subject to change without notification. See Community Sales Manager for details.

Document generated 4/16/26

FIRST FLOOR



© 2026 Landmark Builders, Inc. We enforce our intellectual property rights to the fullest extent permitted by applicable law. Elevations and landscaping are artists' conceptions only. Floor plans may vary depending on elevation selected. Actual construction documents take precedence over artwork.

© 2026 Landmark Builders, Inc. We enforce our intellectual property rights to the fullest extent permitted by applicable law. Elevations and landscaping are artists' conceptions only. Actual construction documents take precedence over artwork. Similar photos shown are for representative purposes only. Details subject to change without notification. See Community Sales Manager for details.

Document generated 4/16/26



Duplex
Willow
Edgemont Preserve

COMMUNITY SALES MANAGER

Andrew Barshinger
Call/Text 717-371-6466

© 2026 Landmark Builders, Inc. We enforce our intellectual property rights to the fullest extent permitted by applicable law. Elevations and landscaping are artists' conceptions only. Actual construction documents take precedence over artwork. Similar photos shown are for representative purposes only. Details subject to change without notification. See Community Sales Manager for details.

Document generated 4/16/26

