



Duplex

36 Canterbury Lane

Anville, PA 17003

COMMUNITY SALES MANAGER

Andrew Barshinger

Call/Text 717-371-6466

SALE PENDING



SALE PENDING

Plan: Holly

3 Bedrooms

2.5 Bathrooms

2,090 Sq. Ft.

* Sold Under Contract * This brand-new 2-story luxury duplex at Edgemont Preserve embodies modern sophistication, blending stylish design with timeless comfort. Step through the charming side entrance into a welcoming foyer that opens into an expansive, sun-drenched open-concept main floor. Just off the front entrance, a well-lit study offers the ideal space for a home office, reading room, or creative retreat; filled with natural light to inspire focus and productivity. Continue through to the kitchen, a true centerpiece boasting stainless steel appliances, quartz countertops, tile backsplash, and a spacious walk-in pantry. The seamless flow into the family room is perfect for entertaining guests or enjoying the fireplace with a cozy night in. From here, step out onto the composite backyard deck, offering the perfect space for outdoor relaxation or summer barbecues.

Upstairs, discover a thoughtfully designed layout featuring a versatile loft, two generously sized bedrooms, a stylish hall bath, and a convenient second-floor laundry room. The luxurious owner's suite is a retreat unto itself, complete with a private bath and spacious closet. This home also includes a 2-car garage, providing ample space for vehicles, storage, and everyday convenience.

Located in Anville, PA within the Palmyra Area School District, Edgemont Preserve offers a charming small-town setting with unparalleled access to leisure, recreation, and everyday conveniences. Just minutes from the area's best dining, shopping, and premier attractions—including Hersheypark, the Giant Center, Mt. Gretna Lake, and several renowned golf courses—this exceptional community places you close to Hershey, Lebanon, and Harrisburg, with convenient access to Routes 422 and 322. Embrace the perfect harmony of luxury, comfort, and location in your new home at Edgemont Preserve. Contact the Community Sales Manager at 717-371-6466 today and discover everything Edgemont Preserve has to offer.





Duplex

36 Canterbury Lane

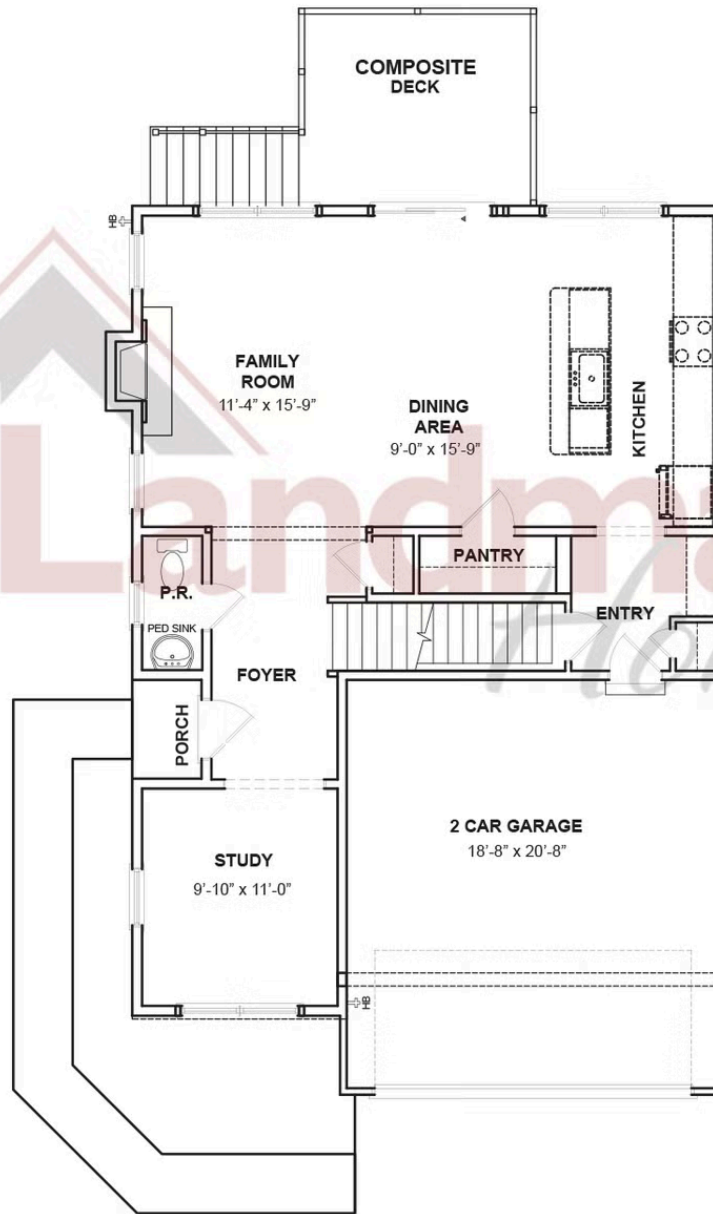
Annville, PA 17003

COMMUNITY SALES MANAGER

Andrew Barshinger

Call/Text 717-371-6466

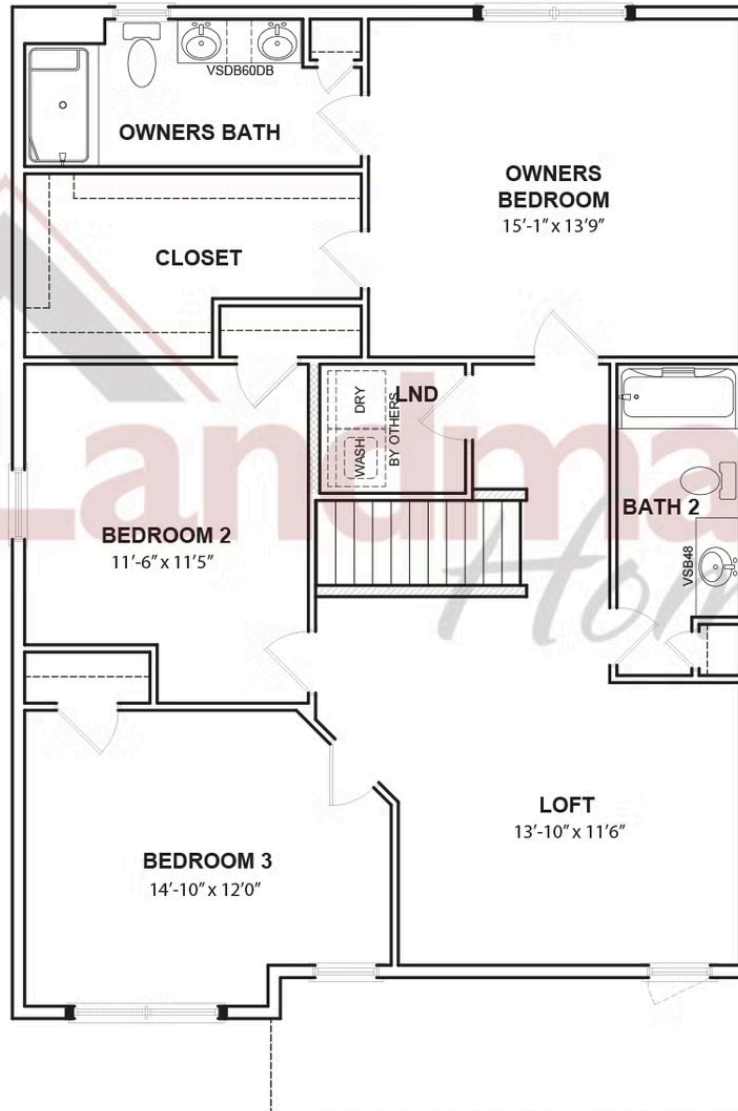
FIRST FLOOR



© 2025 Landmark Builders, Inc. We enforce our intellectual property rights to the fullest extent permitted by applicable law. Elevations and landscaping are artists' conceptions only. Floor plans may vary depending on elevation selected. Actual construction documents take precedence over artwork.



SECOND FLOOR



© 2025 Landmark Builders, Inc. We enforce our intellectual property rights to the fullest extent permitted by applicable law. Elevations and landscaping are artists' conceptions only. Floor plans may vary depending on elevation selected. Actual construction documents take precedence over artwork.