



Duplex
Holly
Edgemont Preserve

COMMUNITY SALES MANAGER

Andrew Barshinger

Call/Text 717-371-6466



Priced From
\$386,000

2 Elevations Available

3 Bedrooms

2.5 Bathrooms

2,086+ Sq. Ft.

2 Car Garage

Welcome to Holly at Edgemont Preserve! This luxury 2-story duplex is the embodiment of modern sophistication, where contemporary design meets timeless comfort. Step through the charming side entrance into a welcoming foyer that opens into an expansive, sun-drenched open-concept main floor. Just off the front entrance, a well-lit study offers the ideal space for a home office, reading room, or creative retreat; filled with natural light to inspire focus and productivity. Continue through to the gourmet kitchen, a true centerpiece boasting attractive finishes, a spacious walk-in pantry, and seamless flow into the family room - perfect for entertaining guests or enjoying a cozy night in. From here, step out onto the private backyard patio, offering the perfect space for outdoor relaxation or summer barbecues. Upstairs, discover a thoughtfully designed layout featuring a versatile loft, two generously sized bedrooms, a stylish hall bath, and a convenient second-floor laundry room. The luxurious owner's suite is a retreat unto itself, complete with a private bath and a spacious closet. Additional highlights include an unfinished basement offering limitless potential for customization, and a spacious 2-car garage that adds convenience and storage. This is more than a home; it's a lifestyle waiting to be embraced.

Available Elevations



Holly Exterior



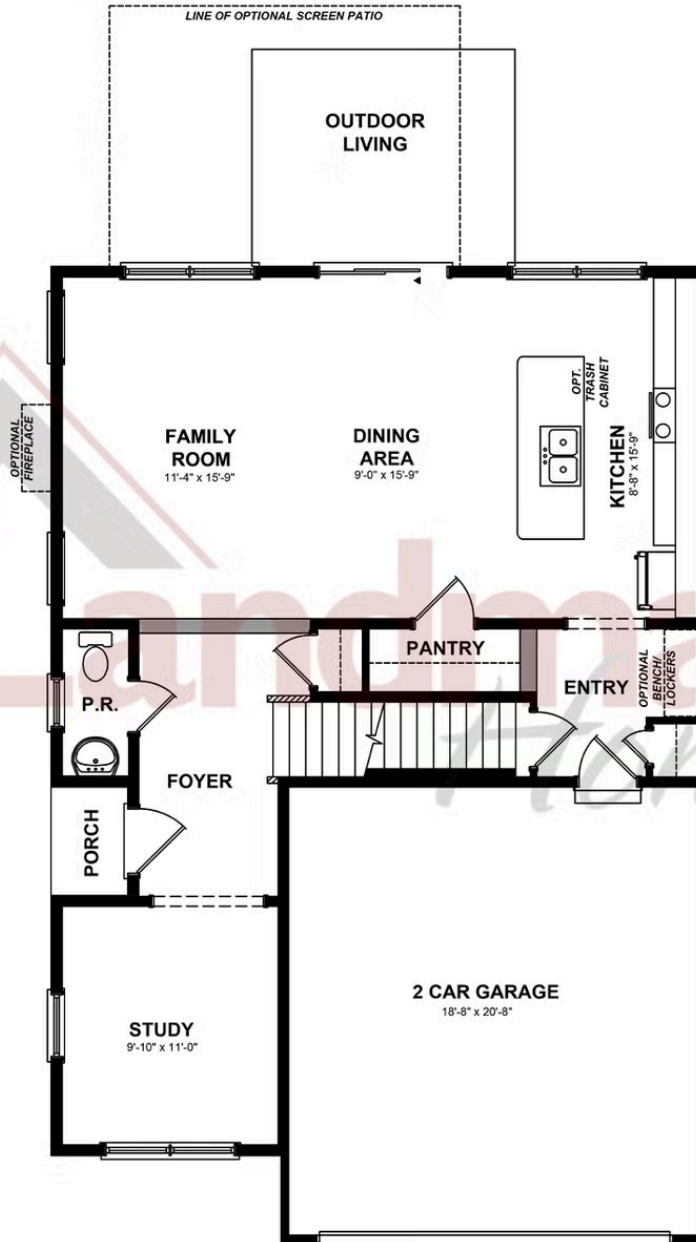
Holly Exterior

Document generated 4/24/26

© 2026 Landmark Builders, Inc. We enforce our intellectual property rights to the fullest extent permitted by applicable law. Elevations and landscaping are artists' conceptions only. Actual construction documents take precedence over artwork. Similar photos shown are for representative purposes only. Details subject to



FIRST FLOOR

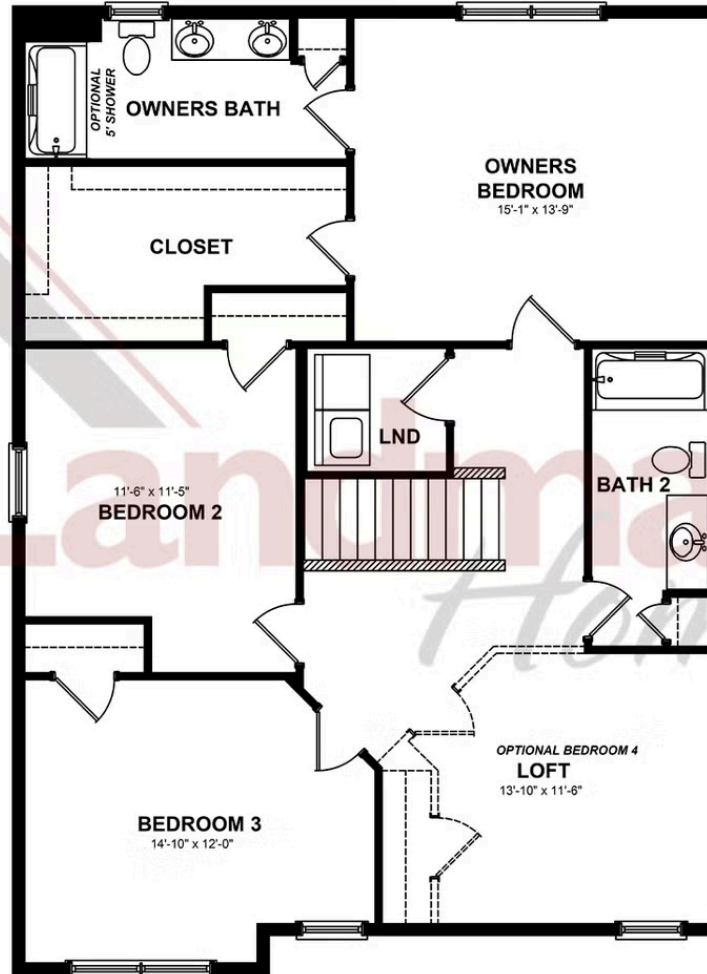


© 2026 Landmark Builders, Inc. We enforce our intellectual property rights to the fullest extent permitted by applicable law. Elevations and landscaping are artists' conceptions only. Floor plans may vary depending on elevation selected. Actual construction documents take precedence over artwork.

© 2026 Landmark Builders, Inc. We enforce our intellectual property rights to the fullest extent permitted by applicable law. Elevations and landscaping are artists' conceptions only. Actual construction documents take precedence over artwork. Similar photos shown are for representative purposes only. Details subject to change without notification. See Community Sales Manager for details.

Document generated 4/24/26

SECOND FLOOR

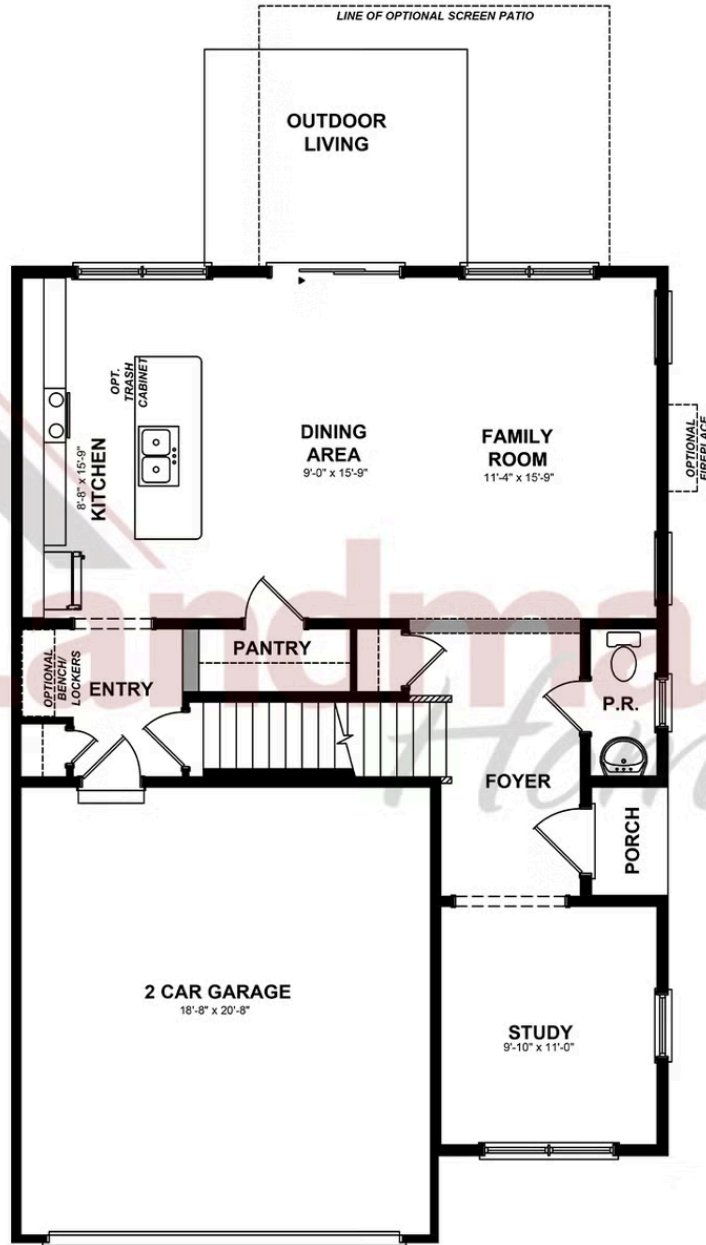


© 2026 Landmark Builders, Inc. We enforce our intellectual property rights to the fullest extent permitted by applicable law. Elevations and landscaping are artists' conceptions only. Floor plans may vary depending on elevation selected. Actual construction documents take precedence over artwork.

© 2026 Landmark Builders, Inc. We enforce our intellectual property rights to the fullest extent permitted by applicable law. Elevations and landscaping are artists' conceptions only. Actual construction documents take precedence over artwork. Similar photos shown are for representative purposes only. Details subject to change without notification. See Community Sales Manager for details.

Document generated 4/24/26

FIRST FLOOR



© 2026 Landmark Builders, Inc. We enforce our intellectual property rights to the fullest extent permitted by applicable law. Elevations and landscaping are artists' conceptions only. Floor plans may vary depending on elevation selected. Actual construction documents take precedence over artwork.

© 2026 Landmark Builders, Inc. We enforce our intellectual property rights to the fullest extent permitted by applicable law. Elevations and landscaping are artists' conceptions only. Actual construction documents take precedence over artwork. Similar photos shown are for representative purposes only. Details subject to change without notification. See Community Sales Manager for details.

Document generated 4/24/26



Duplex
Holly
Edgemont Preserve

COMMUNITY SALES MANAGER

Andrew Barshinger
Call/Text 717-371-6466

© 2026 Landmark Builders, Inc. We enforce our intellectual property rights to the fullest extent permitted by applicable law. Elevations and landscaping are artists' conceptions only. Actual construction documents take precedence over artwork. Similar photos shown are for representative purposes only. Details subject to change without notification. See Community Sales Manager for details.

Document generated 4/24/26

