



Duplex
Dogwood
Edgemont Preserve

COMMUNITY SALES MANAGER

Andrew Barshinger

Call/Text 717-371-6466



Priced From
\$374,600

2 Elevations Available

2 Bedrooms

2 Bathrooms

1,688+ Sq. Ft.

2 Car Garage

Welcome to one of Landmark's newest duplex home plans, the Dogwood, nestled within the esteemed Edgemont Preserve community. This home epitomizes sophisticated one-floor living, seamlessly blending modern design with timeless comfort. Step into an expansive open-concept layout where the kitchen flows effortlessly into the spacious family room, creating an ideal setting for both entertaining and everyday living. The thoughtfully designed floor plan features nine foot ceilings, two generous sized bedrooms and two full sized bathrooms. The secluded owner's suite offers a serene retreat, complete with a dual-sink vanity, a spacious closet, and ensuite bath. Enhancing the home's versatility, the second floor provides ample storage space. The attached two-car garage adds convenience and functionality. Situated just minutes from premier attractions such as Hersheypark, the Giant Center, renowned golf courses, and the tranquil Mt. Gretna Lake, this residence offers unparalleled access to leisure and recreation. Embrace the perfect harmony of luxury, comfort, and location in this exceptional home.

Available Elevations



Dogwood Exterior



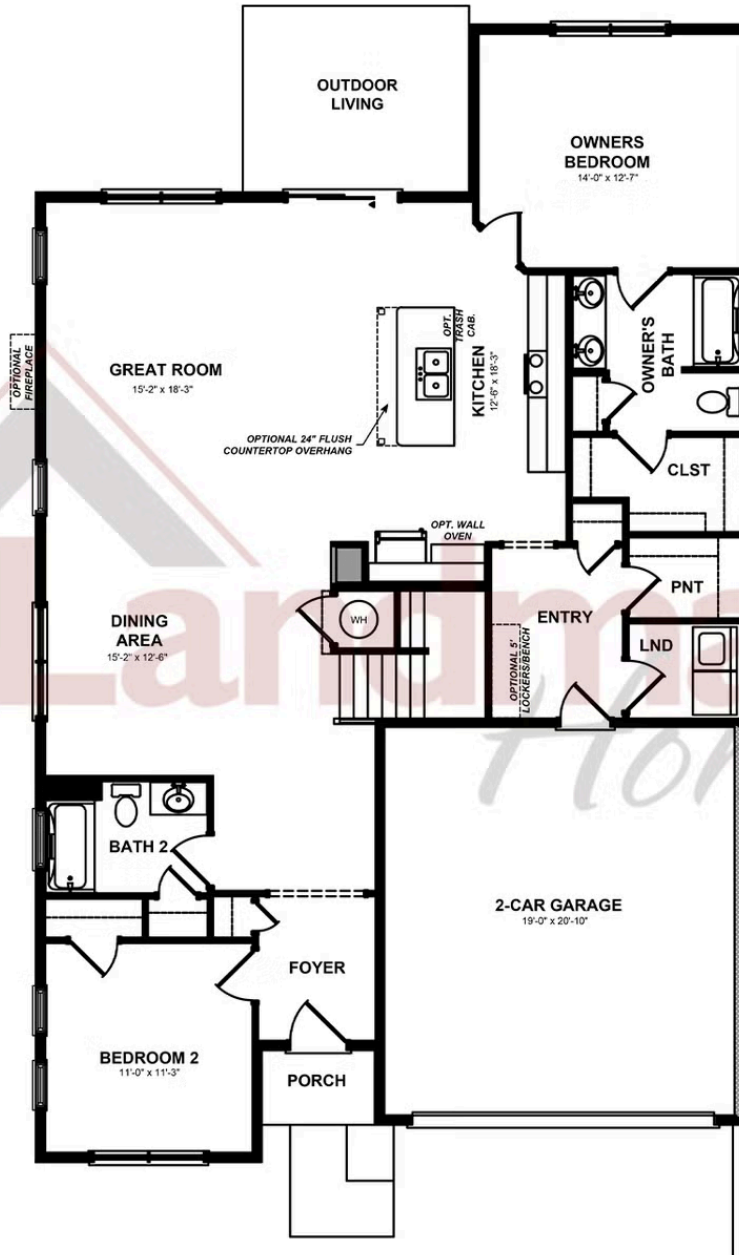
Dogwood Exterior

Document generated 4/24/26

© 2026 Landmark Builders, Inc. We enforce our intellectual property rights to the fullest extent permitted by applicable law. Elevations and landscaping are artists' conceptions only. Actual construction documents take precedence over artwork. Similar photos shown are for representative purposes only. Details subject to



FIRST FLOOR

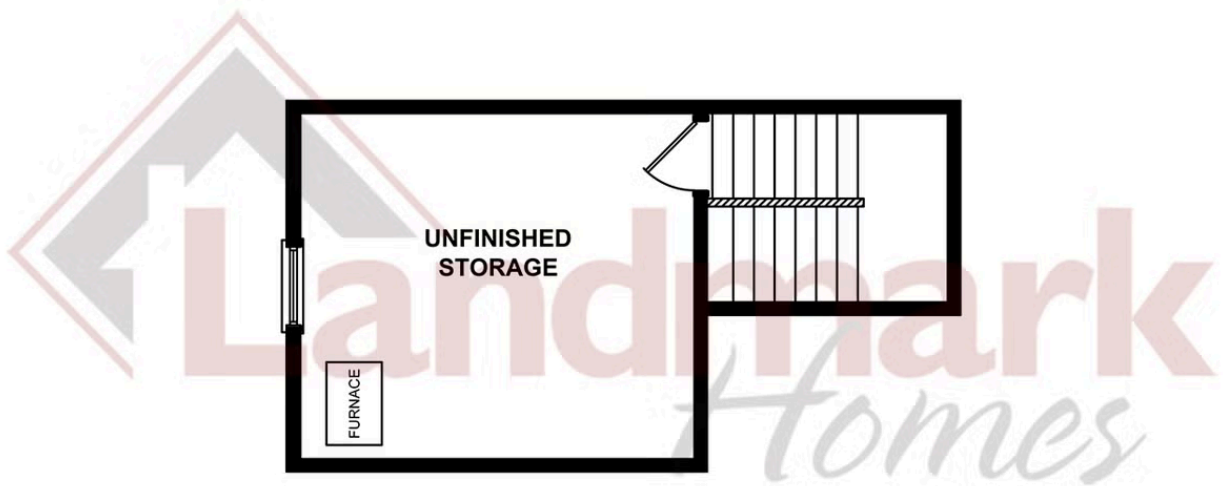


© 2026 Landmark Builders, Inc. We enforce our intellectual property rights to the fullest extent permitted by applicable law. Elevations and landscaping are artists' conceptions only. Floor plans may vary depending on elevation selected. Actual construction documents take precedence over artwork.

© 2026 Landmark Builders, Inc. We enforce our intellectual property rights to the fullest extent permitted by applicable law. Elevations and landscaping are artists' conceptions only. Actual construction documents take precedence over artwork. Similar photos shown are for representative purposes only. Details subject to change without notification. See Community Sales Manager for details.

Document generated 4/24/26

SECOND FLOOR



© 2026 Landmark Builders, Inc. We enforce our intellectual property rights to the fullest extent permitted by applicable law. Elevations and landscaping are artists' conceptions only. Floor plans may vary depending on elevation selected. Actual construction documents take precedence over artwork.

© 2026 Landmark Builders, Inc. We enforce our intellectual property rights to the fullest extent permitted by applicable law. Elevations and landscaping are artists' conceptions only. Actual construction documents take precedence over artwork. Similar photos shown are for representative purposes only. Details subject to change without notification. See Community Sales Manager for details.

Document generated 4/24/26

FIRST FLOOR



© 2026 Landmark Builders, Inc. We enforce our intellectual property rights to the fullest extent permitted by applicable law. Elevations and landscaping are artists' conceptions only. Floor plans may vary depending on elevation selected. Actual construction documents take precedence over artwork.

© 2026 Landmark Builders, Inc. We enforce our intellectual property rights to the fullest extent permitted by applicable law. Elevations and landscaping are artists' conceptions only. Actual construction documents take precedence over artwork. Similar photos shown are for representative purposes only. Details subject to change without notification. See Community Sales Manager for details.

Document generated 4/24/26



Duplex
Dogwood
Edgemont Preserve

COMMUNITY SALES MANAGER

Andrew Barshinger
Call/Text 717-371-6466

© 2026 Landmark Builders, Inc. We enforce our intellectual property rights to the fullest extent permitted by applicable law. Elevations and landscaping are artists' conceptions only. Actual construction documents take precedence over artwork. Similar photos shown are for representative purposes only. Details subject to change without notification. See Community Sales Manager for details.

Document generated 4/24/26

