



Duplex

## 7459 Saint Patrick Court

Abbottstown, PA 17301

COMMUNITY SALES MANAGER

Joel White

Call/Text 717-406-7911

UNDER CONSTRUCTION



Home Priced at

# \$319,900

Plan: Taylor

Elevation: Taylor Exterior

3 Bedrooms

2.5 Bathrooms

1,909 Sq. Ft.

UNDER CONSTRUCTION, MOVE-IN THIS WINTER! Welcome to this beautifully designed new 2-story duplex that combines modern comfort with timeless style. The first-floor features 9-foot ceilings, durable vinyl plank flooring, and a convenient 2-car garage. Just off the foyer, the well-appointed kitchen is a true highlight, featuring stainless steel appliances, quartz countertops, a spacious center island, and dining area. The family room is warm and inviting with plenty of natural light and access to the rear patio, perfect for outdoor relaxation or entertaining. The first-floor owner's suite provides a serene retreat, offering a generous closet and a private bathroom. Upstairs, two additional bedrooms, a stylish hall bath, versatile loft space, and storage area complete the second floor, providing ample room for both comfort and functionality. Paradise Village offers peaceful farmland views of the Blue Mountains with quick access to Route 30. Enjoy nearby parks, historic towns, and an easy commute to York, Gettysburg, and Mechanicsburg.

Document generated 12/24/25





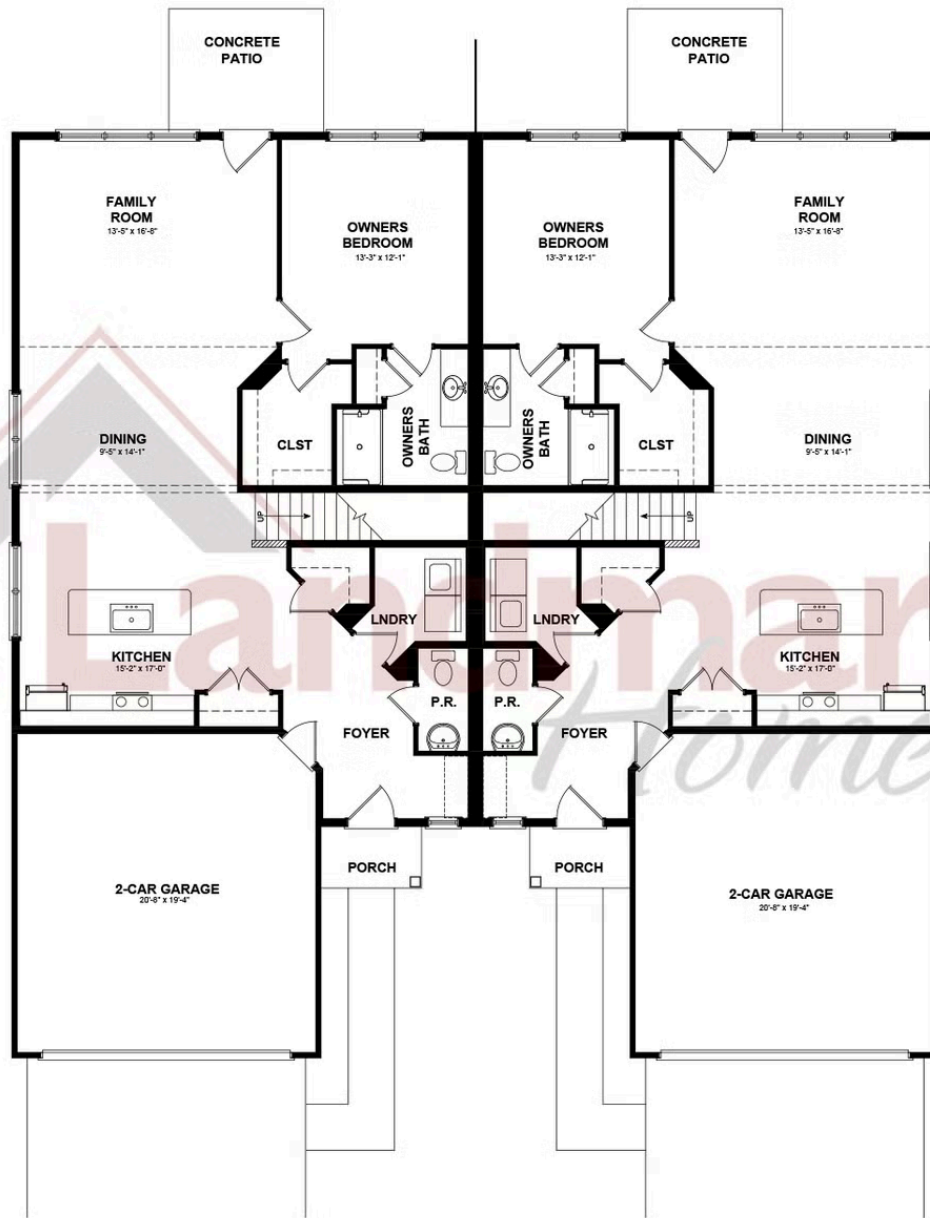
Duplex  
**7459 Saint Patrick Court**  
Abbottstown, PA 17301

COMMUNITY SALES MANAGER

Joel White

Call/Text 717-406-7911

FIRST FLOOR



© 2025 Landmark Builders, Inc. We enforce our intellectual property rights to the fullest extent permitted by applicable law. Elevations and landscaping are artists' conceptions only. Floor plans may vary depending on elevation selected. Actual construction documents take precedence over artwork.





Duplex  
**7459 Saint Patrick Court**  
Abbottstown, PA 17301

**COMMUNITY SALES MANAGER**

Joel White

Call/Text 717-406-7911

## SECOND FLOOR



© 2025 Landmark Builders, Inc. We enforce our intellectual property rights to the fullest extent permitted by applicable law. Elevations and landscaping are artists' conceptions only. Floor plans may vary depending on elevation selected. Actual construction documents take precedence over artwork.

