



Single Family  
**Oakley**

Available in 2 Communities



# Call for Price

1 Elevations Available

4 Bedrooms

2.5 Bathrooms

2,883+ Sq. Ft.

2 Car Garage

Two-story home with an owner's suite on the main level and a 2-car, lower level garage. Upon entering the foyer, there is a private study and stairs to the main level featuring a spacious kitchen, dining area and great room. The upper level is complete with 3 bedrooms and a full bathroom that can be converted to a Jack & Jill bath. There is also an option to add a second bathroom.

## Available Elevations



## FIRST FLOOR



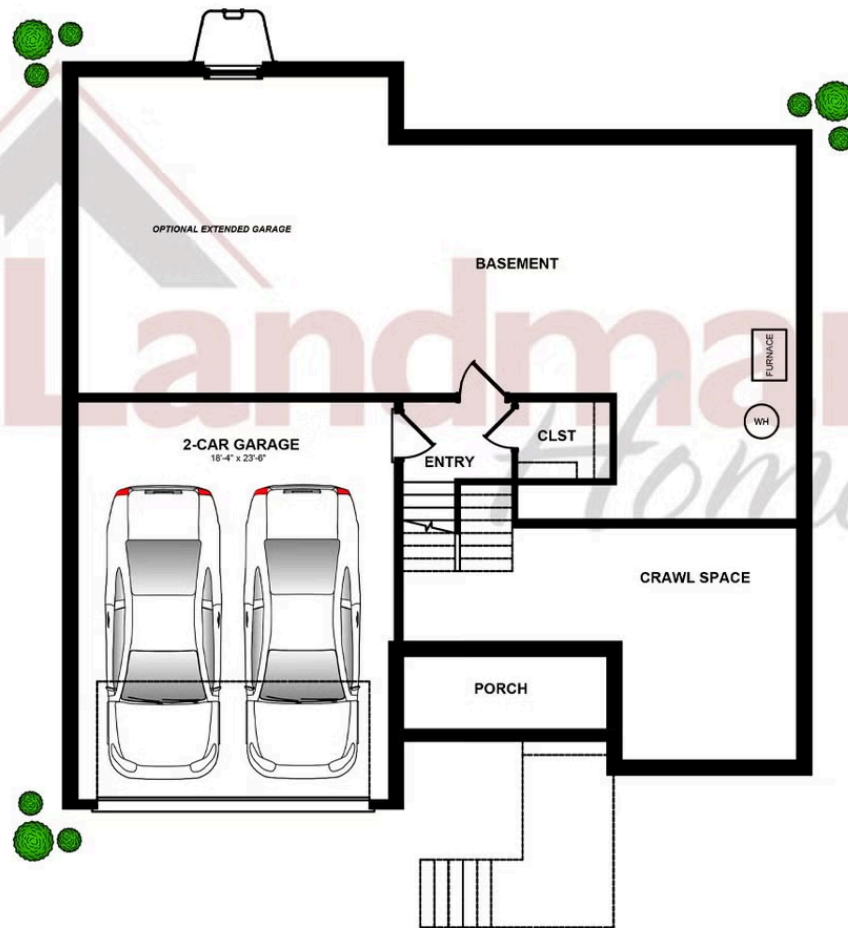
© 2023 Landmark Builders, Inc. We enforce our intellectual property rights to the fullest extent permitted by applicable law. Elevations and landscaping are artists' conceptions only. Floor plans may vary depending on elevation selected. Actual construction documents take precedence over artwork.

## SECOND FLOOR



© 2023 Landmark Builders, Inc. We enforce our intellectual property rights to the fullest extent permitted by applicable law. Elevations and landscaping are artists' conceptions only. Floor plans may vary depending on elevation selected. Actual construction documents take precedence over artwork.

## BASEMENT



© 2023 Landmark Builders, Inc. We enforce our intellectual property rights to the fullest extent permitted by applicable law. Elevations and landscaping are artists' conceptions only. Floor plans may vary depending on elevation selected. Actual construction documents take precedence over artwork.



Single Family  
**Oakley**

Available in 2 Communities

## Available Communities



### Walton Hill

23 Vista Court  
Lititz, PA 17543

Single Family Homes Starting at  
**\$596,865**

2-4 Bed   2-2.5 Bath   1839+ Ft<sup>2</sup>



### Copper Ridge Single Family

157 Copper Ridge Dr  
Newmanstown, PA 17073

Stunning Hilltop Views

Single Family Homes Starting at  
**\$438,000**

2-5 Bed   2-3 Bath   1839+ Ft<sup>2</sup>

