



Single Family
Madison

Available in 2 Communities



Call for Price

2 Elevations Available

3 Bedrooms

2 Bathrooms

1,829+ Sq. Ft.

2 Car Garage

Sunny family room (with optional fireplace) is open to the breakfast area, which provides sliding glass door access to the patio, and is also open to the kitchen. Owner's suite with optional tray ceiling includes a spacious closet and private bathroom. Formal dining room at the front of the home offers an elegant touch to the entry with optional tray ceiling, as well as convenient access to the kitchen.

Available Elevations



Upgraded B Transitional



Upgraded A Traditional

Document generated 4/24/26

© 2026 Landmark Builders, Inc. We enforce our intellectual property rights to the fullest extent permitted by applicable law. Elevations and landscaping are artists' conceptions only. Actual construction documents take precedence over artwork. Similar photos shown are for representative purposes only. Details subject to

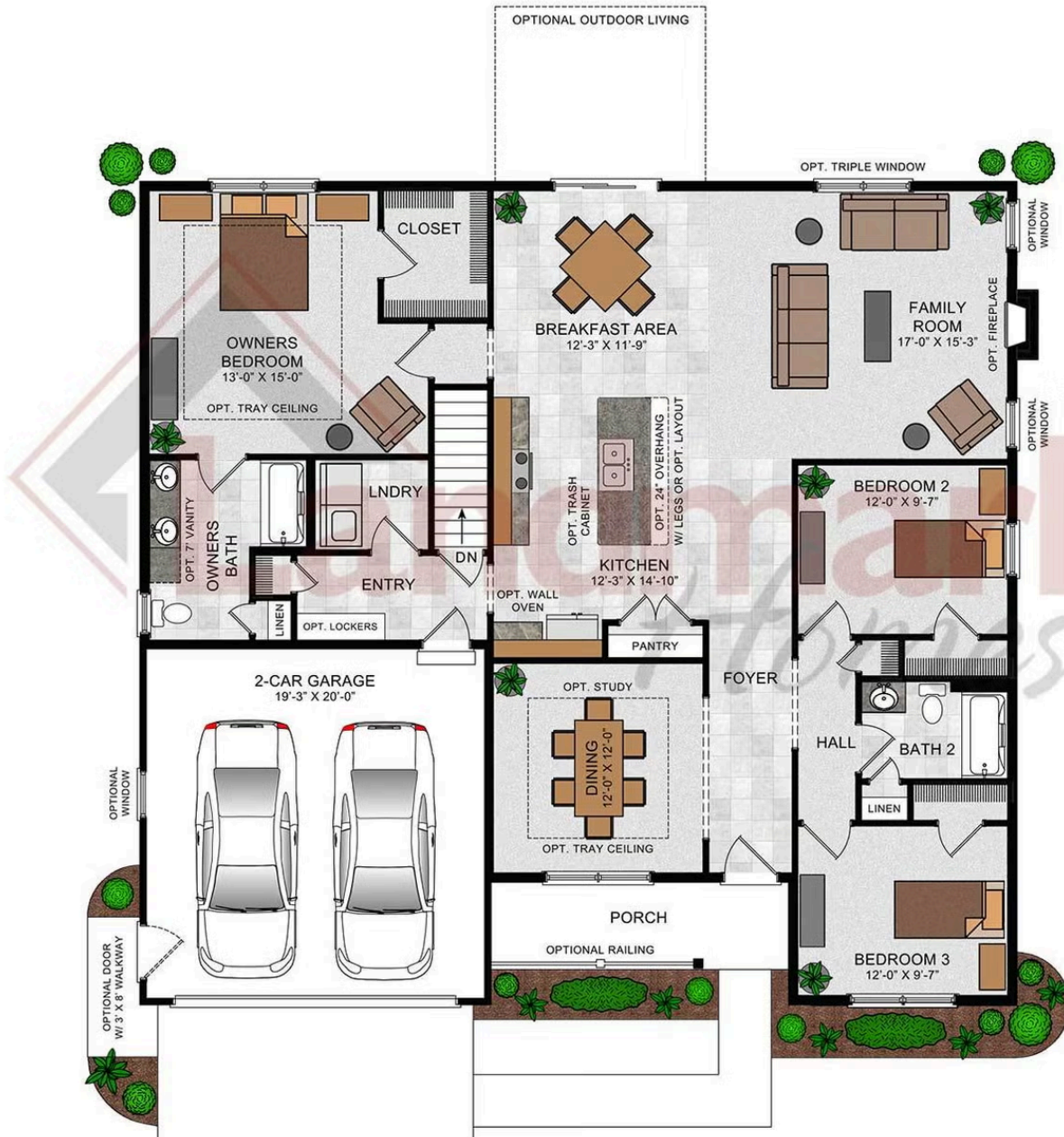




Single Family Madison

Available in 2 Communities

Madison



© 2022 Landmark Builders, Inc. We enforce our intellectual property rights to the fullest extent permitted by applicable law. Elevations and landscaping are artists' conceptions only. Floor plans may vary depending on elevation selected. Actual construction documents take precedence over artwork.

© 2026 Landmark Builders, Inc. We enforce our intellectual property rights to the fullest extent permitted by applicable law. Elevations and landscaping are artists' conceptions only. Actual construction documents take precedence over artwork. Similar photos shown are for representative purposes only. Details subject to change without notification. See Community Sales Manager for details.

Document generated 4/24/26





Single Family
Madison

Available in 2 Communities

Available Communities



Sweetbriar 55+ Living

604 Lilliana Dr
Lebanon, PA 17046

Low HOA

Single Family Homes Starting at
\$403,800

2-3 Bed 2-2.5 Bath 1507+ Ft²



Mountain View Estates

114 Blue Mountain Blvd
Carlisle, PA 17013

Mountain Views and Generous
Homesites

Single Family Homes Starting at
\$470,400

2-5 Bed 2-3 Bath 1829+ Ft²

Document generated 4/24/26

© 2026 Landmark Builders, Inc. We enforce our intellectual property rights to the fullest extent permitted by applicable law. Elevations and landscaping are artists' conceptions only. Actual construction documents take precedence over artwork. Similar photos shown are for representative purposes only. Details subject to

