



Single Family
Logan

Available in 7 Communities



Call for Price

3 Elevations Available

4 Bedrooms

3.5 Bathrooms

3,605+ Sq. Ft.

2 Car Garage

Landmark's newest 2-story home with over 3,600 square feet includes 4 bedrooms, 3.5 baths, and a 2-car garage with mudroom entry. A dramatic 2-story foyer creates a grand first impression. The 1st floor also includes a study, formal dining room, great room and generous kitchen and pantry. Add an optional 2nd island in the kitchen for extra storage and entertaining. The 2nd floor includes a spacious owner's suite with an optional cathedral ceiling, 3 full baths, and enlarged closets for every bedroom.

Available Elevations



Upgraded B Transitional



Upgraded C Trademark



Upgraded Contemporary Elevation

Document generated 4/26/26

© 2026 Landmark Builders, Inc. We enforce our intellectual property rights to the fullest extent permitted by applicable law. Elevations and landscaping are artists' conceptions only. Actual construction documents take precedence over artwork. Similar photos shown are for representative purposes only. Details subject to



FIRST FLOOR



© 2024 Landmark Builders, Inc. We enforce our intellectual property rights to the fullest extent permitted by applicable law. Elevations and landscaping are artists' conceptions only. Floor plans may vary depending on elevation selected. Actual construction documents take precedence over artwork.

© 2026 Landmark Builders, Inc. We enforce our intellectual property rights to the fullest extent permitted by applicable law. Elevations and landscaping are artists' conceptions only. Actual construction documents take precedence over artwork. Similar photos shown are for representative purposes only. Details subject to change without notification. See Community Sales Manager for details.

SECOND FLOOR

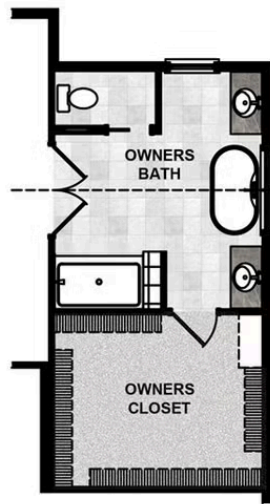
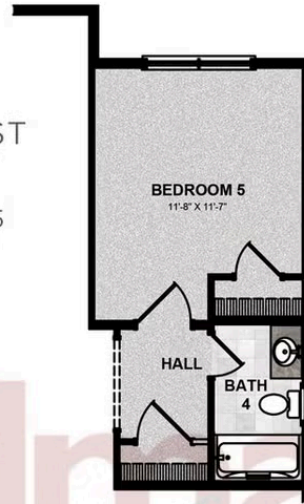


© 2024 Landmark Builders, Inc. We enforce our intellectual property rights to the fullest extent permitted by applicable law. Elevations and landscaping are artists' conceptions only. Floor plans may vary depending on elevation selected. Actual construction documents take precedence over artwork.

© 2026 Landmark Builders, Inc. We enforce our intellectual property rights to the fullest extent permitted by applicable law. Elevations and landscaping are artists' conceptions only. Actual construction documents take precedence over artwork. Similar photos shown are for representative purposes only. Details subject to change without notification. See Community Sales Manager for details.

Document generated 4/26/26

OPTIONAL FIRST
FLOOR PLAN
WITH BEDROOM 5
AND FULL BATH



OPTIONAL SECOND
FLOOR PLAN
WITH UPGRADED OWNERS BATH

© 2024 Landmark Builders, Inc. We enforce our intellectual property rights to the fullest extent permitted by applicable law. Elevations and landscaping are artists' conceptions only. Floor plans may vary depending on elevation selected. Actual construction documents take precedence over artwork.

© 2026 Landmark Builders, Inc. We enforce our intellectual property rights to the fullest extent permitted by applicable law. Elevations and landscaping are artists' conceptions only. Actual construction documents take precedence over artwork. Similar photos shown are for representative purposes only. Details subject to change without notification. See Community Sales Manager for details.

Document generated 4/26/26



Available Communities 1/2



Hawk Valley Estates

200 West Valley Rd
 Denver, PA 17517

1/2 Acre Homesites

Single Family Homes Starting at
\$574,000

3-5 Bed 2.5-3.5 Bath 2180+ Ft²



Summer Layne

501 Sunset Blvd
 Annville, PA 17003

Palmyra Area School District

Single Family Homes Starting at
\$532,100

3-5 Bed 2-4 Bath 2142+ Ft²



Wyndale

108 Wyndale Dr
 Ephrata, PA 17522

Walking Trails and Playground

Single Family Homes Starting at
\$512,700

2-4 Bed 2-3.5 Bath 1839+ Ft²



Fox Bend

250 Dahlia Circle
 Lebanon, PA 17042

Generous Homesites with Scenic Views

Single Family Homes Starting at
\$496,700

3-4 Bed 2.5-3.5 Bath 2180+ Ft²



Closeout

The Meadows at Colonial Club

1002 Edorma Court
 Harrisburg, PA 17112

Large Homesites

Single Family Homes

4 Bed 2.5-3.5 Bath 2868+ Ft²



Southgate

129 Alexandria Dr
 Annville, PA 17003

Single Family Homes Starting at
\$477,600

2-4 Bed 2-3.5 Bath 1911+ Ft²





Single Family

Logan

Available in 7 Communities

Available Communities 2/2



Quinn Estates

220 N Cornwall Rd E
Lebanon, PA 17042

1 Acre Homesites

Single Family Homes

3-4 Bed 2-3.5 Bath 2386+ Ft²

Document generated 4/26/26

© 2026 Landmark Builders, Inc. We enforce our intellectual property rights to the fullest extent permitted by applicable law. Elevations and landscaping are artists' conceptions only. Actual construction documents take precedence over artwork. Similar photos shown are for representative purposes only. Details subject to

