



Single Family
Lisette

Available in 1 Community



Call for Price

3 Elevations Available

4 Bedrooms

2.5 Bathrooms

2,215+ Sq. Ft.

2 Car Garage

This beautifully designed home with over 2200 sqft offers space, flexibility, and modern comfort for today's lifestyle. With 4 bedrooms, 2.5 baths, and a versatile flex room, the layout adapts easily to work, play, or relaxation. The heart of the home features an open-concept kitchen, dining, and family room, creating a bright and inviting space ideal for entertaining and everyday living. Thoughtful flow and natural light make this area feel both spacious and welcoming. Upstairs, the primary suite serves as a private retreat, complete with an expansive closet and the option for additional closet space to suit your storage needs. Three additional bedrooms provide ample room for family or guests. With its smart design and comfortable living areas, this home delivers the perfect blend of functionality and style.

Available Elevations

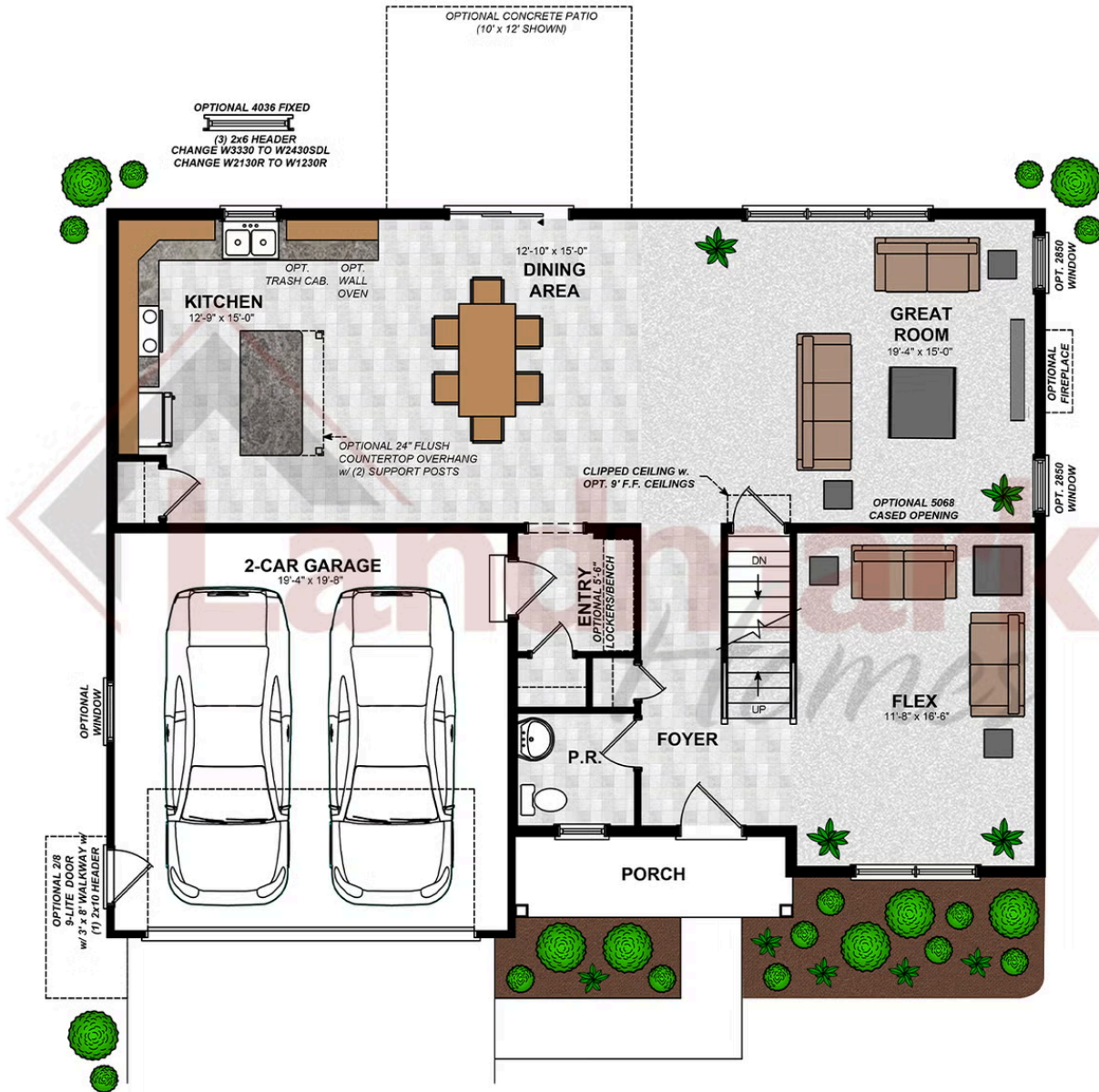


Document generated 4/14/26

© 2026 Landmark Builders, Inc. We enforce our intellectual property rights to the fullest extent permitted by applicable law. Elevations and landscaping are artists' conceptions only. Actual construction documents take precedence over artwork. Similar photos shown are for representative purposes only. Details subject to



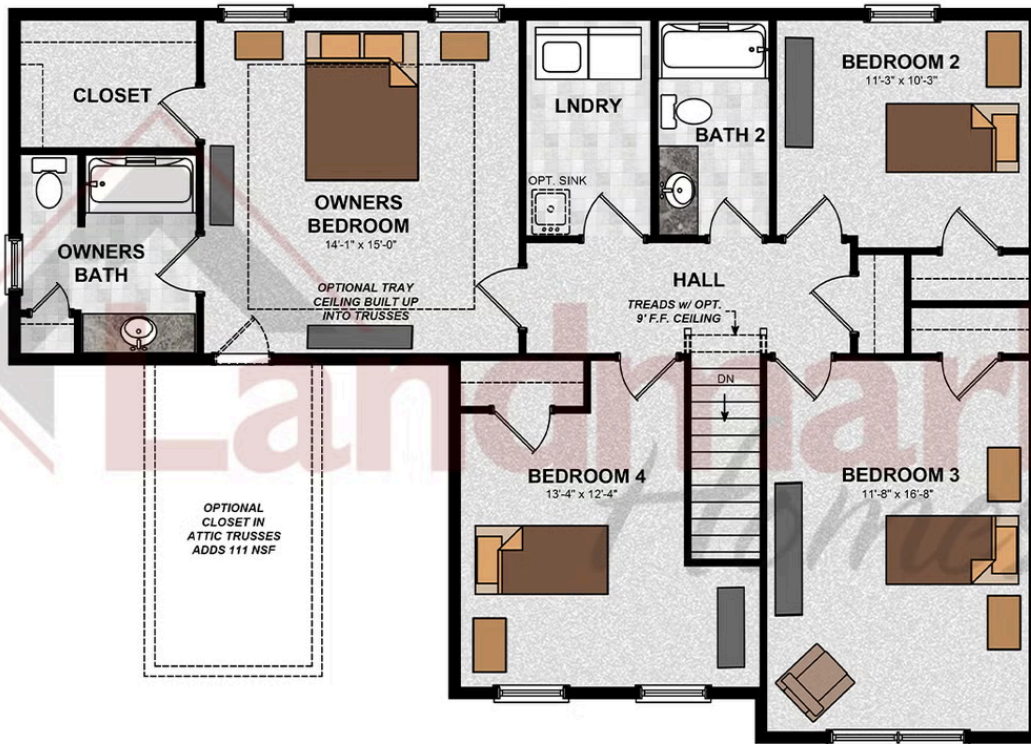
FIRST FLOOR



© 2026 Landmark Builders, Inc. We enforce our intellectual property rights to the fullest extent permitted by applicable law. Elevations and landscaping are artists' conceptions only. Floor plans may vary depending on elevation selected. Actual construction documents take precedence over artwork.

© 2026 Landmark Builders, Inc. We enforce our intellectual property rights to the fullest extent permitted by applicable law. Elevations and landscaping are artists' conceptions only. Actual construction documents take precedence over artwork. Similar photos shown are for representative purposes only. Details subject to change without notification. See Community Sales Manager for details.

SECOND FLOOR



© 2026 Landmark Builders, Inc. We enforce our intellectual property rights to the fullest extent permitted by applicable law. Elevations and landscaping are artists' conceptions only. Floor plans may vary depending on elevation selected. Actual construction documents take precedence over artwork.

© 2026 Landmark Builders, Inc. We enforce our intellectual property rights to the fullest extent permitted by applicable law. Elevations and landscaping are artists' conceptions only. Actual construction documents take precedence over artwork. Similar photos shown are for representative purposes only. Details subject to change without notification. See Community Sales Manager for details.

Document generated 4/14/26



Single Family
Lisette

Available in 1 Community

Available Communities



Freedom Square

Copenhaffer Rd
York, PA 17404

New Homes Coming Soon to
Conewago Township

Single Family Homes Starting at
\$394,900

2-5 Bed 2-3 Bath 1647+ Ft²

Document generated 4/14/26

© 2026 Landmark Builders, Inc. We enforce our intellectual property rights to the fullest extent permitted by applicable law. Elevations and landscaping are artists' conceptions only. Actual construction documents take precedence over artwork. Similar photos shown are for representative purposes only. Details subject to

Call/Text anytime at (717) 283-5790

info@OwnALandmark.com

OwnALandmark.com

