



Single Family

Lawrence

Available in 6 Communities



Call for Price

3 Elevations Available

4 Bedrooms

2.5 Bathrooms

2,276+ Sq. Ft.

2 Car Garage

A welcoming, well-planned family home offering 4 bedrooms, including a spacious owner's suite with a private bath, double bowl vanity, and oversized closet. The 2-car garage includes a separate mudroom entry with optional built-in lockers. On the first floor, the great room is the perfect place to gather as a family, with an optional gas fireplace, and open views of the kitchen and dining room. The kitchen includes a breakfast bar for convenient eat-in seating, and the adjoining dining room provides sliding glass door access to the back yard patio. The flex space room can serve a variety of purposes, such as a study or a formal living room. Convenient 2nd floor laundry area.

Available Elevations



Upgraded Transitional B



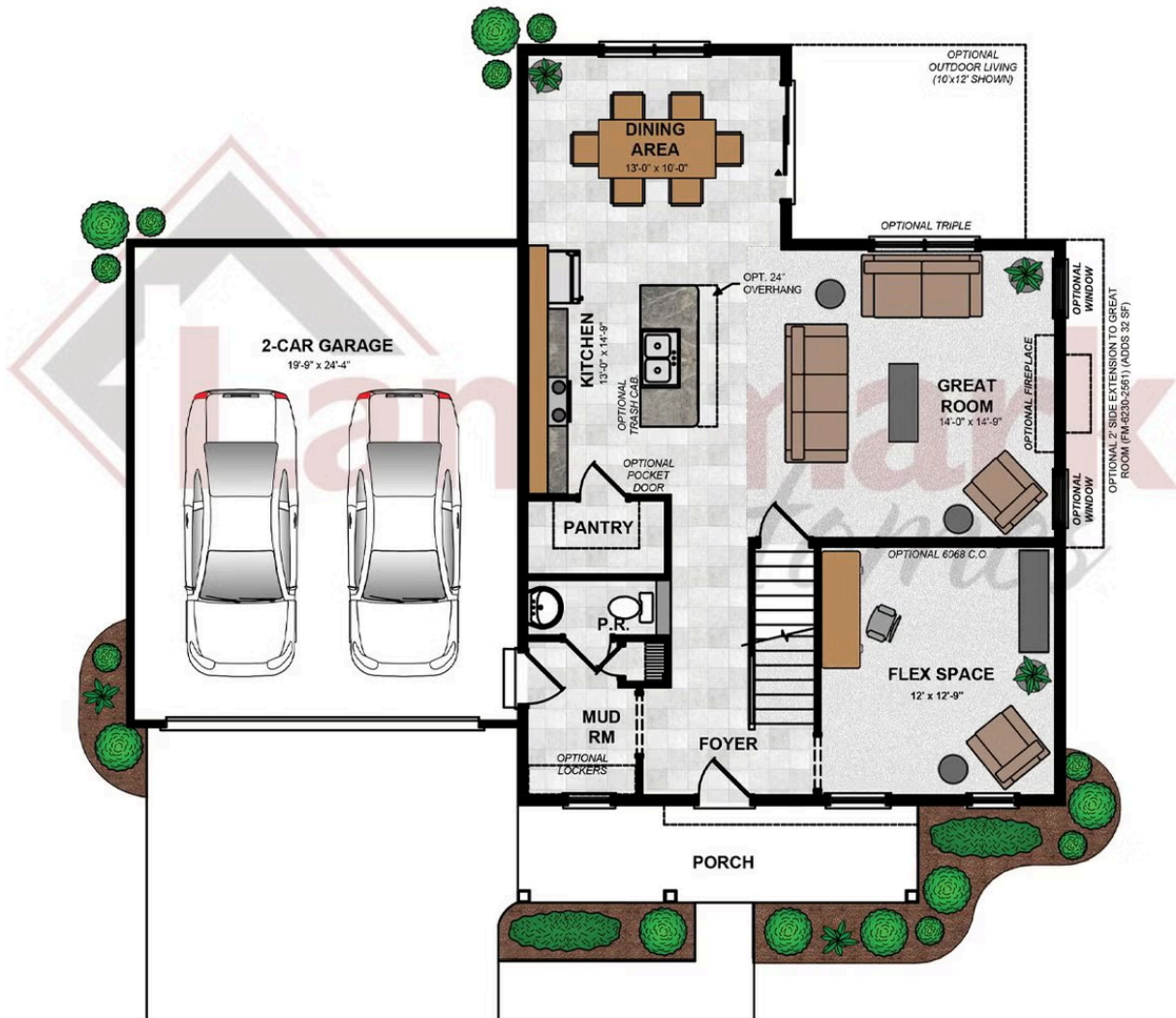
Upgraded Traditional A



Upgraded Trademark C

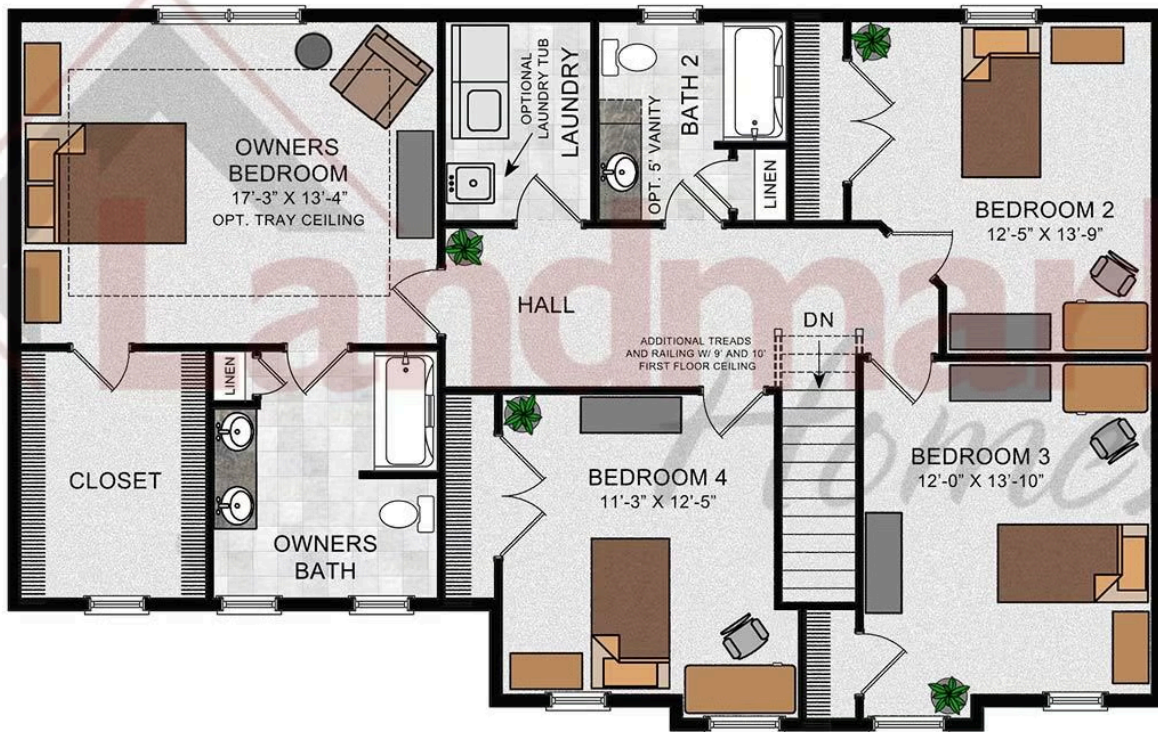


FIRST FLOOR FRONT LOAD GARAGE



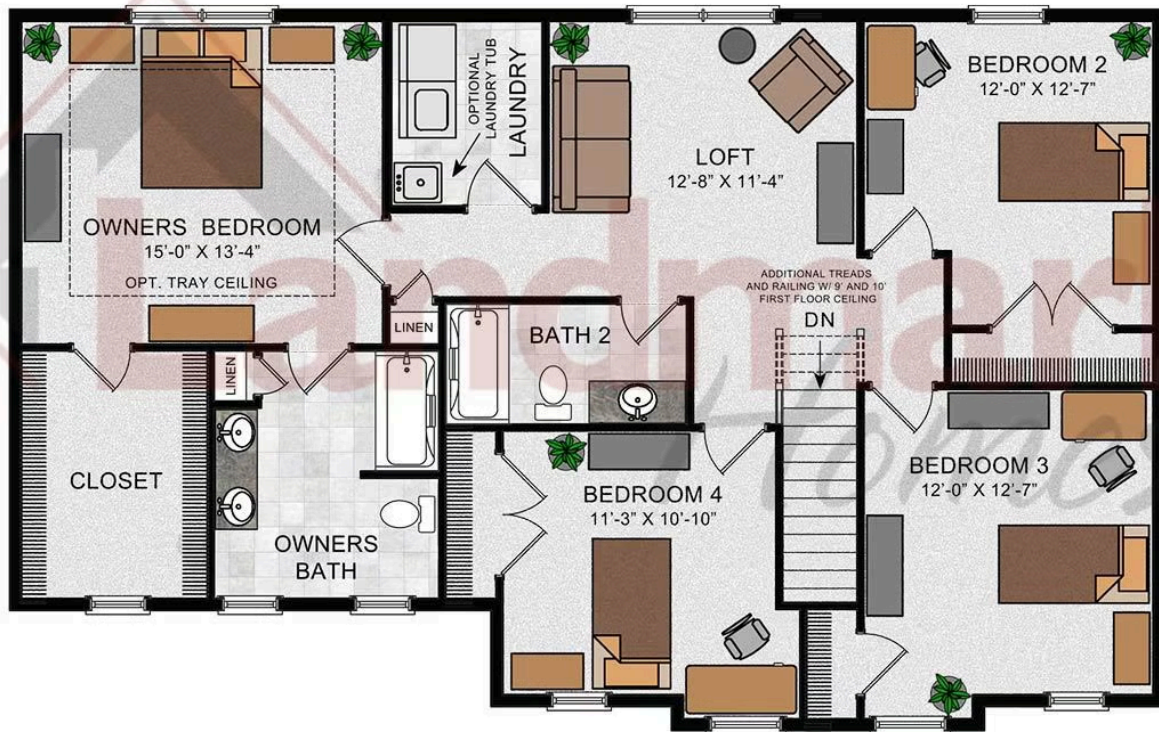
© 2024 Landmark Builders, Inc. We enforce our intellectual property rights to the fullest extent permitted by applicable law. Elevations and landscaping are artists' conceptions only. Floor plans may vary depending on elevation selected. Actual construction documents take precedence over artwork.

SECOND FLOOR



© 2022 Landmark Builders, Inc. We enforce our intellectual property rights to the fullest extent permitted by applicable law. Elevations and landscaping are artists' conceptions only. Floor plans may vary depending on elevation selected. Actual construction documents take precedence over artwork.

OPTIONAL SECOND FLOOR



© 2022 Landmark Builders, Inc. We enforce our intellectual property rights to the fullest extent permitted by applicable law. Elevations and landscaping are artists' conceptions only. Floor plans may vary depending on elevation selected. Actual construction documents take precedence over artwork.



Single Family
Lawrence

Available in 6 Communities





Single Family
Lawrence

Available in 6 Communities

Available Communities



Mountain View Estates

114 Blue Mountain Blvd
Carlisle, PA 17013

Mountain Views and Generous
Homesites

Single Family Homes Starting at
\$469,400

2-4 Bed 2-3 Bath 1829+ Ft²



Wright's Landing at Legacy Park

100 Legacy Park Drive
Mechanicsburg, PA 17055

Walking Trails, Playground,
Clubhouse

Single Family Homes Starting at
\$470,500

2-4 Bed 2-3.5 Bath 1672+ Ft²



Wyndale

124 Wyndale Dr
Ephrata, PA 17522

Walking Trails and Playground

Single Family Homes Starting at
\$506,700

2-4 Bed 2-3.5 Bath 1839+ Ft²



Copper Ridge Single Family

157 Copper Ridge Dr
Newmanstown, PA 17073

Stunning Hilltop Views

Single Family Homes Starting at
\$438,000

2-5 Bed 2-3 Bath 1839+ Ft²



Briar Ridge

834 Kimmerlings Rd
Lebanon, PA 17046

1/2 Acre Homesites

Single Family Homes Starting at
\$441,600

2-4 Bed 2-2.5 Bath 1839+ Ft²



Model Grand Opening 3/14

Southgate

129 Alexandria Dr
Annville, PA 17003

Single Family Homes Starting at
\$471,900

2-4 Bed 2-3.5 Bath 1839+ Ft²

