



Single Family
Kingston

Available in 12 Communities



Call for Price

4 Elevations Available

4 Bedrooms

2.5 Bathrooms

3,068+ Sq. Ft.

2 Car Garage

This two-story home with over 3,000 sq. feet includes a 2-car garage with mudroom entry. To the front of the home is a versatile living room and a formal dining room with an optional tray ceiling. A 2-story great room with optional gas fireplace opens to the breakfast area and kitchen. The laundry room is on the 2nd floor convenient to the bedrooms. The owner's suite with an expansive closet and private bathroom can be upgraded. An optional recreation room can be added to the 2nd floor for additional living space. A grand, 2-story foyer option can also be added to the home.

Available Elevations



Upgraded Transitional B



Upgraded Traditional A



Upgraded Trademark C



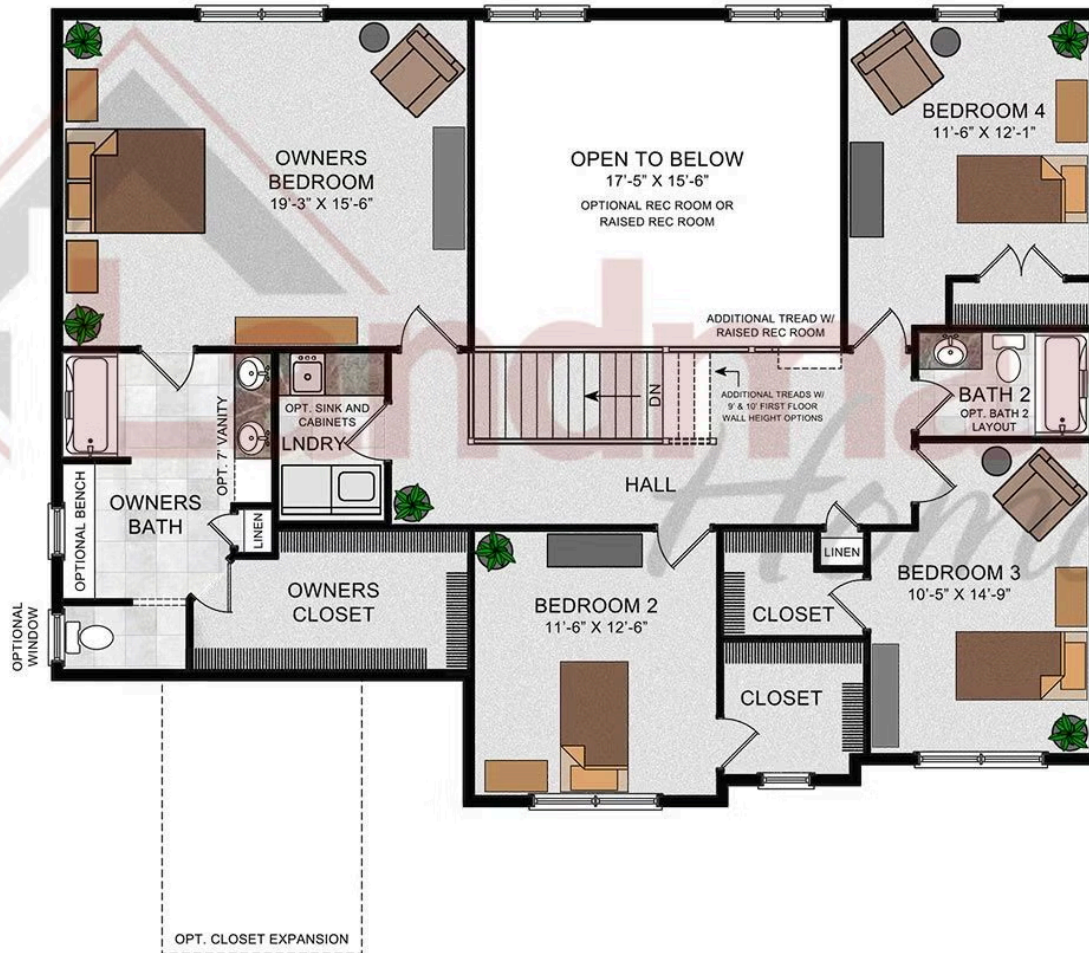
Upgraded Contemporary Elevation





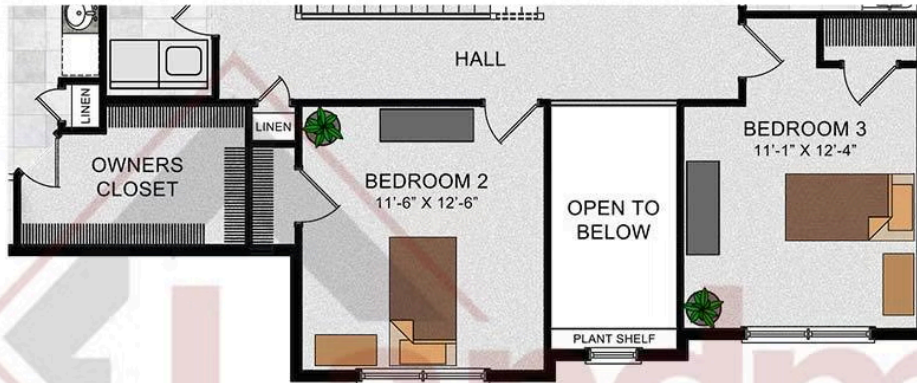
© 2023 Landmark Builders, Inc. We enforce our intellectual property rights to the fullest extent permitted by applicable law. Elevations and landscaping are artists' conceptions only. Floor plans may vary depending on elevation selected. Actual construction documents take precedence over artwork.

SECOND FLOOR

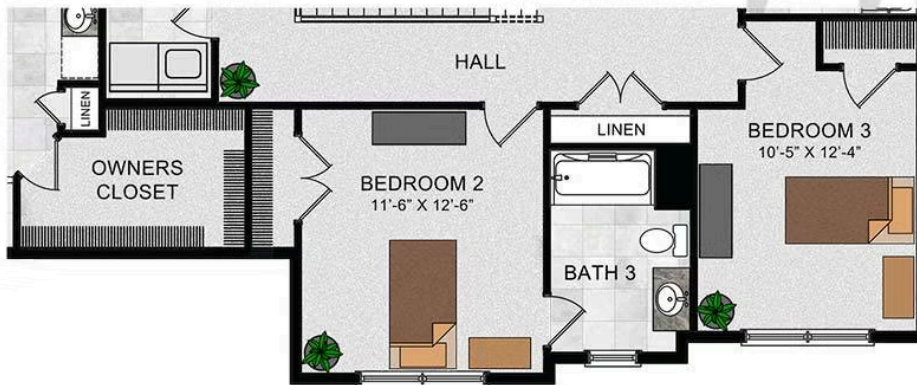


© 2022 Landmark Builders, Inc. We enforce our intellectual property rights to the fullest extent permitted by applicable law. Elevations and landscaping are artists' conceptions only. Floor plans may vary depending on elevation selected. Actual construction documents take precedence over artwork.

OPTIONAL OPEN FOYER



OPTIONAL BEDROOM 2 FULL BATH



OPTIONAL FIRST
FLOOR GUEST SUITE



© 2022 Landmark Builders, Inc. We enforce our intellectual property rights to the fullest extent permitted by applicable law. Elevations and landscaping are artists' conceptions only. Floor plans may vary depending on elevation selected. Actual construction documents take precedence over artwork.



Single Family
Kingston

Available in 12 Communities

Available Communities 1/2



Hawk Valley Estates

200 West Valley Rd
Denver, PA 17517

1/2 Acre Homesites

Single Family Homes Starting at
\$573,000

3-4 Bed 2.5-3.5 Bath 2180+ Ft²



Mountaindale

4817 Mountainrise Drive
Harrisburg, PA 17110

Spacious, Wooded Homesites

Single Family Homes Starting at
\$710,400

3-4 Bed 2-3 Bath 2711+ Ft²



Mountain View Estates

114 Blue Mountain Blvd
Carlisle, PA 17013

Mountain Views and Generous
Homesites

Single Family Homes Starting at
\$469,400

2-5 Bed 2-3 Bath 1829+ Ft²



Summer Layne

501 Sunset Blvd
Annville, PA 17003

Palmyra Area School District

Single Family Homes Starting at
\$534,300

3-5 Bed 2-4 Bath 2142+ Ft²



Wyndale

124 Wyndale Dr
Ephrata, PA 17522

Walking Trails and Playground

Single Family Homes Starting at
\$493,000

2-5 Bed 2-3.5 Bath 1839+ Ft²



Walton Hill

23 Vista Court
Lititz, PA 17543

Single Family Homes Starting at
\$596,865

2-4 Bed 2-3 Bath 1839+ Ft²





Single Family
Kingston

Available in 12 Communities

Available Communities 2/2



Copper Ridge Single Family

157 Copper Ridge Dr
Newmanstown, PA 17073

Stunning Hilltop Views

Single Family Homes Starting at
\$431,500

2-5 Bed 2-3 Bath 1839+ Ft²



Fox Bend

250 Dahlia Circle
Lebanon, PA 17042

Generous Homesites with Scenic Views

Single Family Homes Starting at
\$498,200

3-4 Bed 2-3.5 Bath 2180+ Ft²



Trindle Place

104 Notting Hill Court
Mechanicsburg, PA 17050

Cumberland Valley Schools

Single Family Homes Starting at
\$518,900

3-5 Bed 2-3 Bath 2142+ Ft²



The Meadows at Colonial Club

1002 Edorma Court
Harrisburg, PA 17112

Large Homesites

Single Family Homes Starting at
\$756,900

4-5 Bed 2-3 Bath 2868+ Ft²



Briar Ridge

834 Kimmerlings Rd
Lebanon, PA 17046

1/2 Acre Homesites

Single Family Homes Starting at
\$441,600

2-4 Bed 2-2.5 Bath 1839+ Ft²



Southgate

510 Bachman Rd
Annville, PA 17003

Single Family Homes Starting at
\$466,400

2-4 Bed 2-3.5 Bath 1839+ Ft²

