



Single Family
Jensen

Available in 1 Community



Call for Price

3 Elevations Available

3 Bedrooms

2.5 Bathrooms

2,552+ Sq. Ft.

2 Car Garage

A welcoming front porch sets the stage for the Jensen's open plan. Upon entering, the spacious great room opens to the kitchen and dining area, where triple windows and sliding glass door access to the outside provide plenty of natural light. The first-floor owner's suite, study, and laundry area benefit from a private hallway entrance. On the second floor are 2 additional bedrooms, a full bathroom, and a loft, with the options for an additional bedroom #4.

Available Elevations



Upgraded C Trademark



Upgraded A Traditional



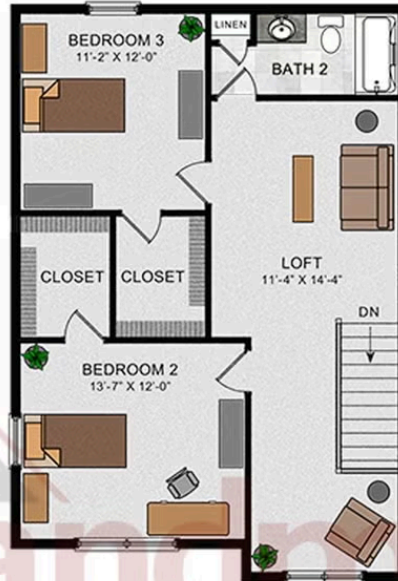
Upgraded B Transitional





© 2025 Landmark Builders, Inc. We enforce our intellectual property rights to the fullest extent permitted by applicable law. Elevations and landscaping are artists' conceptions only. Floor plans may vary depending on elevation selected. Actual construction documents take precedence over artwork.

SECOND FLOOR



OPTIONAL SECOND FLOOR



© 2022 Landmark Builders, Inc. We enforce our intellectual property rights to the fullest extent permitted by applicable law. Elevations and landscaping are artists' conceptions only. Floor plans may vary depending on elevation selected. Actual construction documents take precedence over artwork.



Single Family
Jensen

Available in 1 Community

Available Communities



Wright's Landing at Legacy Park

100 Legacy Park Drive
Mechanicsburg, PA 17055

Walking Trails, Playground,
Clubhouse

Single Family Homes Starting at
\$461,000

2-4 Bed 2-3 Bath 1672+ Ft²

