



Single Family

Jamie

Available in 2 Communities



Call for Price

1 Elevations Available

3 Bedrooms

2 Bathrooms

2,071+ Sq. Ft.

2 Car Garage

This comfortable one-story, 2000+ sq ft home features a front porch, 2-car alley load garage with mudroom entry, side patio or optional outdoor living area, 3 bedrooms and 2 baths. Optional gas fireplace in the living room, plenty of natural light in the dining room, and a convenient owner's suite with an expansive closet, and a private bathroom. Open kitchen with large center island provides easy access to dining room and living room.

Available Elevations

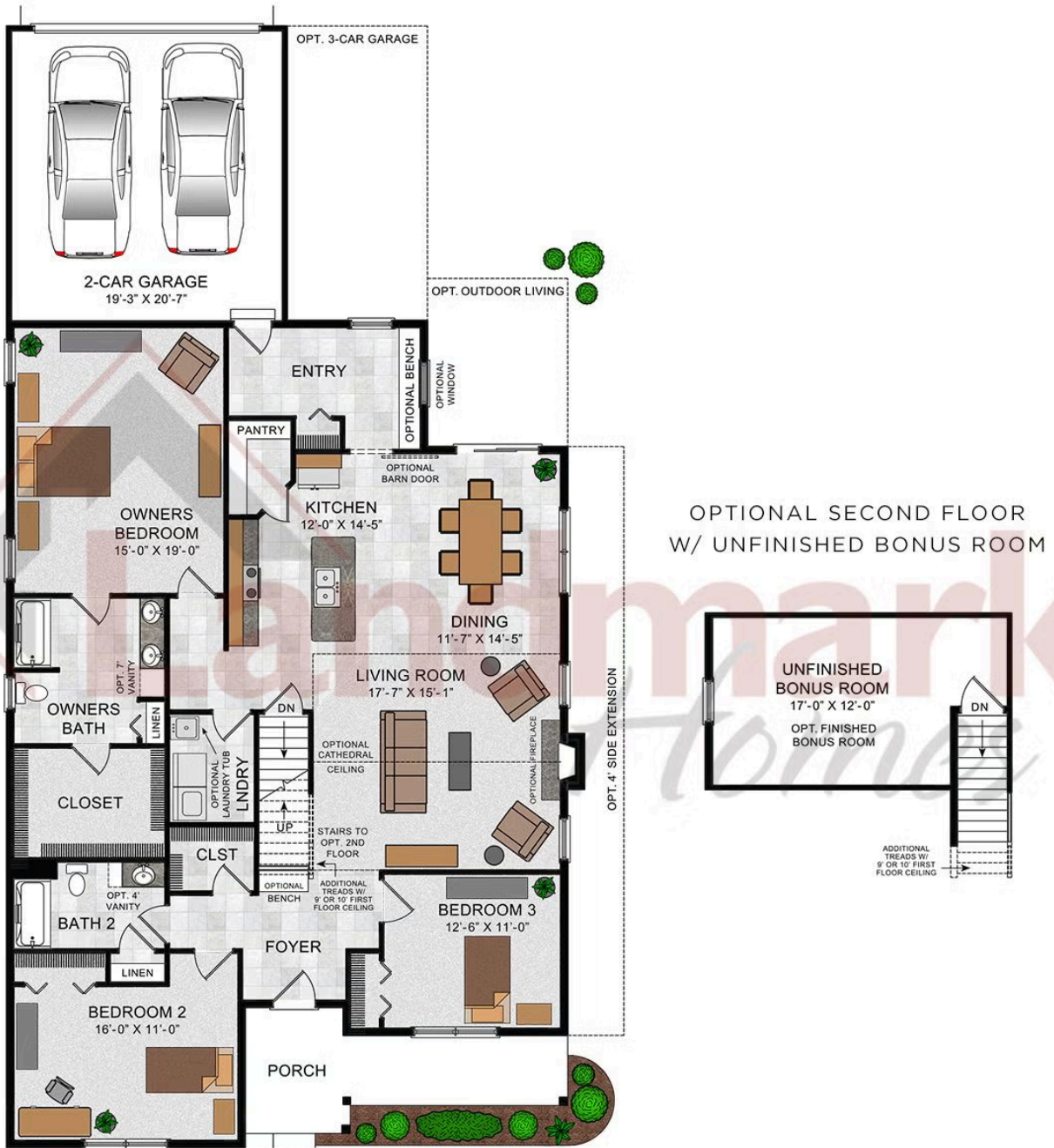


Upgraded C Trademark

Document generated 4/24/26

© 2026 Landmark Builders, Inc. We enforce our intellectual property rights to the fullest extent permitted by applicable law. Elevations and landscaping are artists' conceptions only. Actual construction documents take precedence over artwork. Similar photos shown are for representative purposes only. Details subject to





© 2021 Landmark Builders, Inc. We enforce our intellectual property rights to the fullest extent permitted by applicable law. Elevations and landscaping are artists' conceptions only. Floor plans may vary depending on elevation selected. Actual construction documents take precedence over artwork.

© 2026 Landmark Builders, Inc. We enforce our intellectual property rights to the fullest extent permitted by applicable law. Elevations and landscaping are artists' conceptions only. Actual construction documents take precedence over artwork. Similar photos shown are for representative purposes only. Details subject to change without notification. See Community Sales Manager for details.



Single Family
Jamie

Available in 2 Communities

Available Communities



Wright's Landing at Legacy Park

100 Legacy Park Drive
Mechanicsburg, PA 17055

Walking Trails, Playground,
Clubhouse

Single Family Homes Starting at
\$468,800

2-4 Bed 2-3.5 Bath 1672+ Ft²



Inspire 55+ at Legacy Park

100 Legacy Park Dr
Mechanicsburg, PA 17055

Private Clubhouse

Single Family Homes Starting at
\$508,900

2-3 Bed 2-2.5 Bath 1839+ Ft²

Document generated 4/24/26

© 2026 Landmark Builders, Inc. We enforce our intellectual property rights to the fullest extent permitted by applicable law. Elevations and landscaping are artists' conceptions only. Actual construction documents take precedence over artwork. Similar photos shown are for representative purposes only. Details subject to

