



Single Family
Huntington
Available in 7 Communities



Call for Price

- 3 Elevations Available
- 4 Bedrooms
- 2.5 Bathrooms
- 2,198+ Sq. Ft.
- 2 Car Garage

A gorgeous, well-planned family home offering three roomy bedrooms and an owner's suite with a private bath, double bowl vanity, and spacious closet. A flex space room and dining room flank the foyer upon entering this stately home. The large family room with optional fireplace flows comfortably into the sunlit breakfast area. The open kitchen has an optional center island for even more working space.

Available Elevations



Upgraded Trademark C



Upgraded Traditional A



Upgraded Transitional B

Document generated 4/24/26

© 2026 Landmark Builders, Inc. We enforce our intellectual property rights to the fullest extent permitted by applicable law. Elevations and landscaping are artists' conceptions only. Actual construction documents take precedence over artwork. Similar photos shown are for representative purposes only. Details subject to



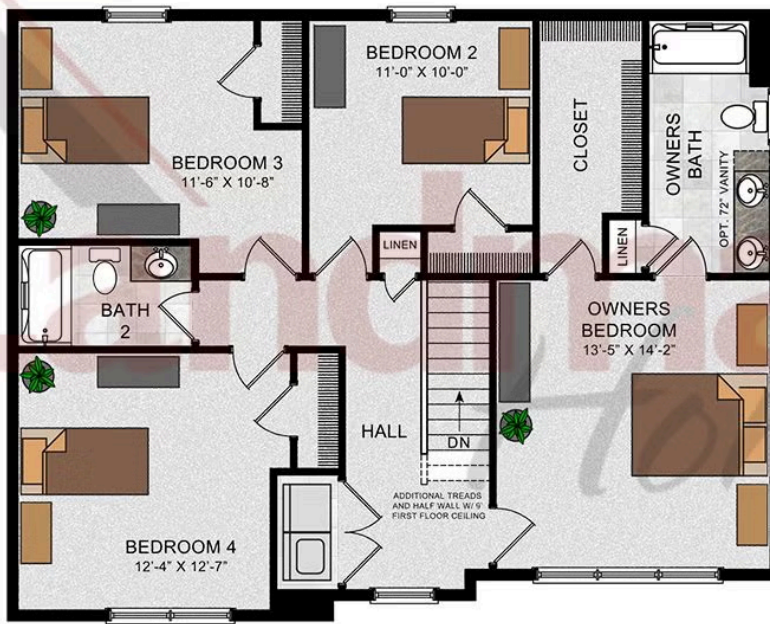
FIRST FLOOR



© 2022 Landmark Builders, Inc. We enforce our intellectual property rights to the fullest extent permitted by applicable law. Elevations and landscaping are artists' conceptions only. Floor plans may vary depending on elevation selected. Actual construction documents take precedence over artwork.

© 2026 Landmark Builders, Inc. We enforce our intellectual property rights to the fullest extent permitted by applicable law. Elevations and landscaping are artists' conceptions only. Actual construction documents take precedence over artwork. Similar photos shown are for representative purposes only. Details subject to change without notification. See Community Sales Manager for details.

SECOND FLOOR

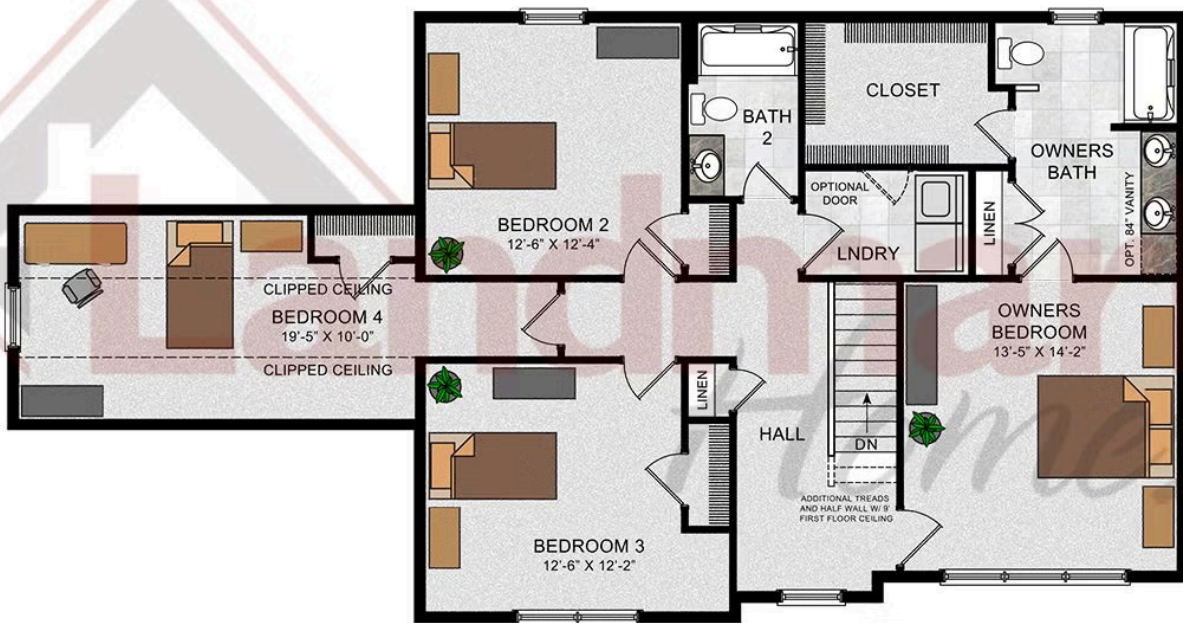


© 2022 Landmark Builders, Inc. We enforce our intellectual property rights to the fullest extent permitted by applicable law. Elevations and landscaping are artists' conceptions only. Floor plans may vary depending on elevation selected. Actual construction documents take precedence over artwork.

© 2026 Landmark Builders, Inc. We enforce our intellectual property rights to the fullest extent permitted by applicable law. Elevations and landscaping are artists' conceptions only. Actual construction documents take precedence over artwork. Similar photos shown are for representative purposes only. Details subject to change without notification. See Community Sales Manager for details.

Document generated 4/24/26

OPTIONAL SECOND FLOOR



© 2022 Landmark Builders, Inc. We enforce our intellectual property rights to the fullest extent permitted by applicable law. Elevations and landscaping are artists' conceptions only. Floor plans may vary depending on elevation selected. Actual construction documents take precedence over artwork.

© 2026 Landmark Builders, Inc. We enforce our intellectual property rights to the fullest extent permitted by applicable law. Elevations and landscaping are artists' conceptions only. Actual construction documents take precedence over artwork. Similar photos shown are for representative purposes only. Details subject to change without notification. See Community Sales Manager for details.

Document generated 4/24/26



Single Family Huntington

Available in 7 Communities

Available Communities 1/2



Mountain View Estates

114 Blue Mountain Blvd
Carlisle, PA 17013

Mountain Views and Generous
Homesites

Single Family Homes Starting at
\$470,400

2-5 Bed 2-3 Bath 1829+ Ft²



Summer Layne

501 Sunset Blvd
Annville, PA 17003

Palmyra Area School District

Single Family Homes Starting at
\$532,100

3-5 Bed 2-4 Bath 2142+ Ft²



Wyndale

108 Wyndale Dr
Ephrata, PA 17522

Walking Trails and Playground

Single Family Homes Starting at
\$512,700

2-4 Bed 2-3.5 Bath 1839+ Ft²



Copper Ridge Single Family

157 Copper Ridge Dr
Newmanstown, PA 17073

Stunning Hilltop Views

Single Family Homes Starting at
\$439,100

2-4 Bed 2-2.5 Bath 1839+ Ft²



Fox Bend

250 Dahlia Circle
Lebanon, PA 17042

Generous Homesites with Scenic
Views

Single Family Homes Starting at
\$496,700

3-4 Bed 2.5-3.5 Bath 2180+ Ft²



Briar Ridge

834 Kimmerlings Rd
Lebanon, PA 17046

1/2 Acre Homesites

Single Family Homes Starting at
\$441,600

2-4 Bed 2-2.5 Bath 1839+ Ft²

Document generated 4/24/26

© 2026 Landmark Builders, Inc. We enforce our intellectual property rights to the fullest extent permitted by applicable law. Elevations and landscaping are artists' conceptions only. Actual construction documents take precedence over artwork. Similar photos shown are for representative purposes only. Details subject to





Available Communities 2/2



Southgate

129 Alexandria Dr
Annville, PA 17003

Single Family Homes Starting at
\$477,600

2-4 Bed 2-3.5 Bath 1911+ Ft²

