



Single Family Hudson

Available in 1 Community



Call for Price

1 Elevations Available

4 Bedrooms

2.5 Bathrooms

2,918+ Sq. Ft.

2 Car Garage

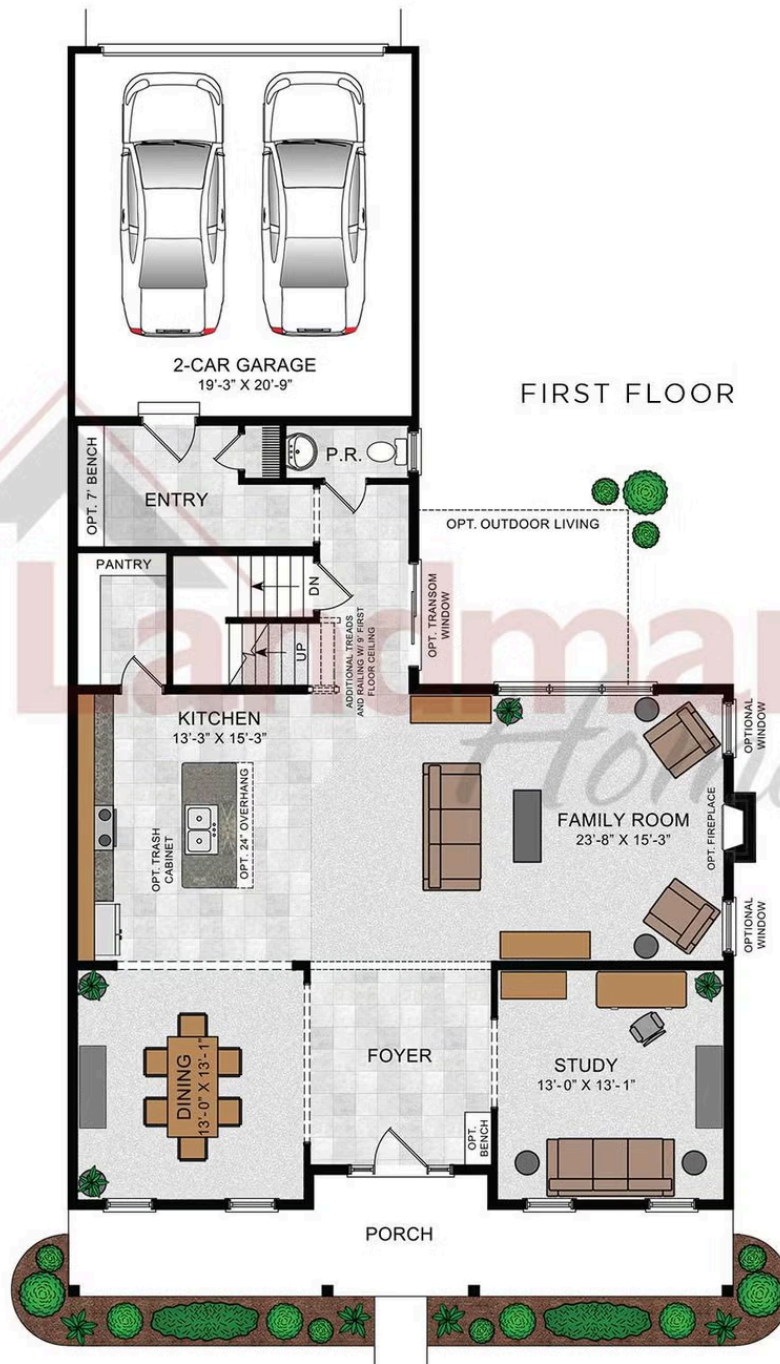
A welcoming front porch invites you in to the spacious foyer of this craftsman style home. With over 2,900 sq. ft. of living space, this open floor plan includes a formal dining room and versatile flex room. The kitchen is open to the family room with optional fireplace. To the rear of the home is a mudroom and 2-car garage. The 2nd floor features a loft area, 3 bedrooms, full bathroom, laundry room, and an owner's suite with private bath and expansive closet.

Available Elevations

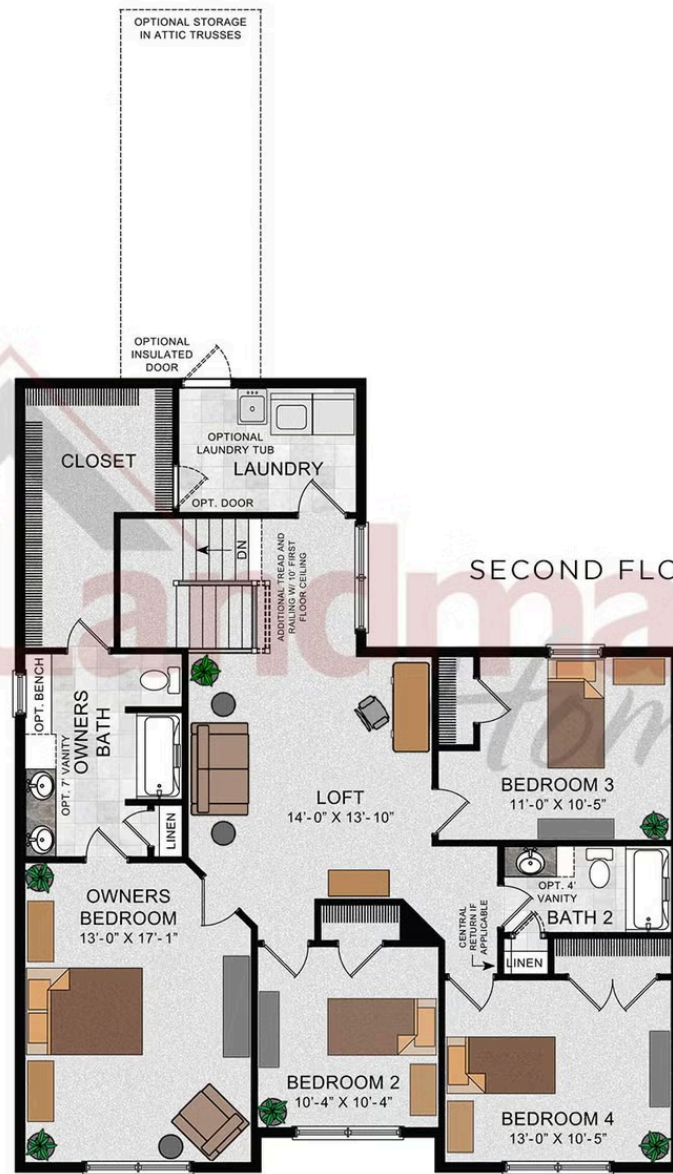


Hudson Exterior





© 2023 Landmark Builders, Inc. We enforce our intellectual property rights to the fullest extent permitted by applicable law. Elevations and landscaping are artists' conceptions only. Floor plans may vary depending on elevation selected. Actual construction documents take precedence over artwork.



© 2023 Landmark Builders, Inc. We enforce our intellectual property rights to the fullest extent permitted by applicable law. Elevations and landscaping are artists' conceptions only. Floor plans may vary depending on elevation selected. Actual construction documents take precedence over artwork.



Single Family
Hudson

Available in 1 Community

Available Communities



Wright's Landing at Legacy Park

100 Legacy Park Drive
Mechanicsburg, PA 17055

Walking Trails, Playground,
Clubhouse

Single Family Homes Starting at
\$470,500

2-4 Bed 2-3.5 Bath 1672+ Ft²

